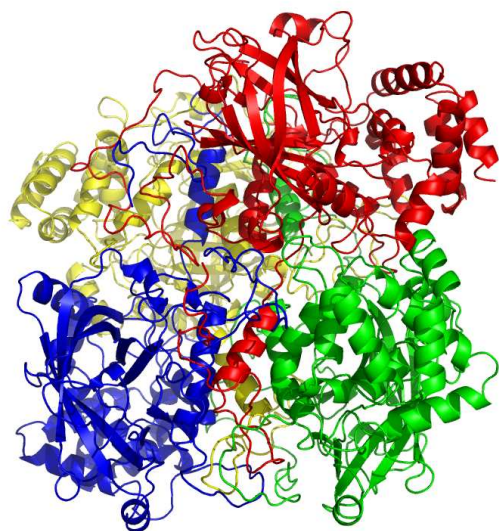


1a4e

Evolutionary trace report by **report_maker**

September 18, 2008



4.3.3	DSSP	12
4.3.4	HSSP	12
4.3.5	LaTex	12
4.3.6	Muscle	12
4.3.7	Pymol	12
4.4	Note about ET Viewer	12
4.5	Citing this work	12
4.6	About report_maker	12
4.7	Attachments	12

CONTENTS

1 Introduction

2 Chain 1a4eA

- 2.1 P15202 overview
- 2.2 Multiple sequence alignment for 1a4eA
- 2.3 Residue ranking in 1a4eA
- 2.4 Top ranking residues in 1a4eA and their position on the structure
 - 2.4.1 Clustering of residues at 25% coverage.
 - 2.4.2 Overlap with known functional surfaces at 25% coverage.

3 Notes on using trace results

- 3.1 Coverage
- 3.2 Known substitutions
- 3.3 Surface
- 3.4 Number of contacts
- 3.5 Annotation
- 3.6 Mutation suggestions

4 Appendix

- 4.1 File formats
- 4.2 Color schemes used
- 4.3 Credits
 - 4.3.1 **Alistat**
 - 4.3.2 **CE**

1 INTRODUCTION

From the original Protein Data Bank entry (PDB id 1a4e):

Title: Catalase a from saccharomyces cerevisiae

Compound: Mol id: 1; molecule: catalase a; chain: a, b, c, d; ec: 1.11.1.6

Organism, scientific name: Saccharomyces Cerevisiae;

1a4e contains a single unique chain 1a4eA (488 residues long) and its homologues 1a4eD, 1a4eC, and 1a4eB.

2 CHAIN 1A4EA

2.1 P15202 overview

From SwissProt, id P15202, 100% identical to 1a4eA:

- 1 **Description:** Peroxisomal catalase A (EC 1.11.1.6).
- 1 **Organism, scientific name:** Saccharomyces cerevisiae (Baker's yeast).
- 1 **Taxonomy:** Eukaryota; Fungi; Ascomycota; Saccharomycotina; Saccharomycetes; Saccharomycetales; Saccharomycetaceae; Saccharomyces.
- 1 **Function:** Occurs in almost all aerobically respiring organisms and serves to protect cells from the toxic effects of hydrogen peroxide.
- 2 **Catalytic activity:** 2 H(2)O(2) = O(2) + 2 H(2)O.
- 3 **Cofactor:** Heme group.
- 3 **Subunit:** Homotetramer.
- 11 **Interaction:**
- 11 **Subcellular location:** Peroxisomal.
- 11 **Miscellaneous:** This is one of two catalases in S.cerevisiae; the other is catalase T, which is the cytoplasmic form.
- 11 **Similarity:** Belongs to the catalase family.
- 11 **About:** This Swiss-Prot entry is copyright. It is produced through a collaboration between the Swiss Institute of Bioinformatics and the EMBL outstation - the European Bioinformatics Institute. There are no restrictions on its use as long as its content is in no way modified and this statement is not removed.
- 11 **2.2 Multiple sequence alignment for 1a4eA**
- 11 For the chain 1a4eA, the alignment 1a4eA.msf (attached) with 91 sequences was used. The alignment was assembled through combination of BLAST searching on the UniProt database and alignment
- 12

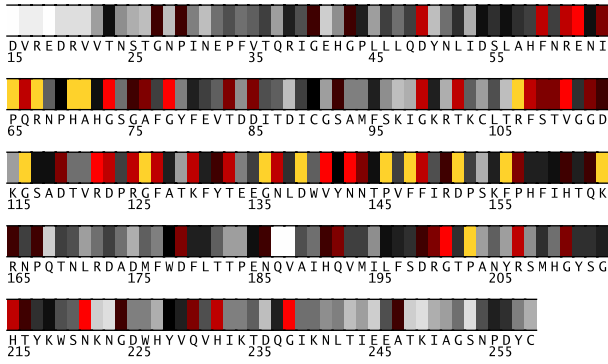


Fig. 1. Residues 15-258 in 1a4eA colored by their relative importance. (See Appendix, Fig.13, for the coloring scheme.)

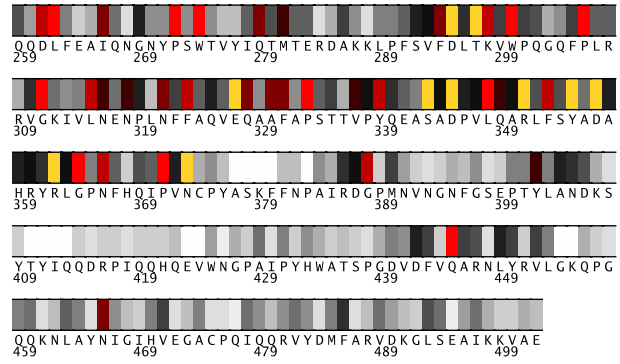


Fig. 2. Residues 259-502 in 1a4eA colored by their relative importance. (See Appendix, Fig.13, for the coloring scheme.)

using Muscle program. It can be found in the attachment to this report, under the name of 1a4eA.msfa. Its statistics, from the *alistat* program are the following:

```

Format:                MSF
Number of sequences:   91
Total number of residues: 42979
Smallest:              445
Largest:               488
Average length:        472.3
Alignment length:      488
Average identity:       49%
Most related pair:     99%
Most unrelated pair:   30%
Most distant seq:      43%

```

Furthermore, 3% of residues show as conserved in this alignment.

The alignment consists of 42% eukaryotic (14% vertebrata, 3% arthropoda, 15% fungi, 1% plantae), and 56% prokaryotic sequences. (Descriptions of some sequences were not readily available.) The file containing the sequence descriptions can be found in the attachment, under the name 1a4eA.descr.

2.3 Residue ranking in 1a4eA

The 1a4eA sequence is shown in Figs. 1–2, with each residue colored according to its estimated importance. The full listing of residues in 1a4eA can be found in the file called 1a4eA.ranks_sorted in the attachment.

2.4 Top ranking residues in 1a4eA and their position on the structure

In the following we consider residues ranking among top 25% of residues in the protein. Figure 3 shows residues in 1a4eA colored by their importance: bright red and yellow indicate more conserved/important residues (see Appendix for the coloring scheme). A Pymol script for producing this figure can be found in the attachment.

2.4.1 Clustering of residues at 25% coverage. Fig. 4 shows the top 25% of all residues, this time colored according to clusters they belong to. The clusters in Fig.4 are composed of the residues listed

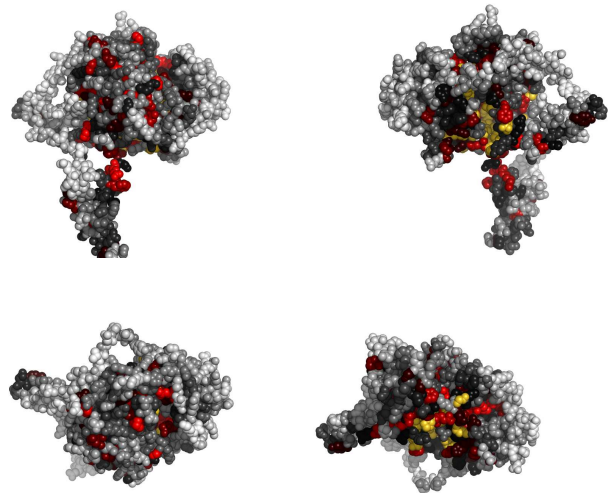


Fig. 3. Residues in 1a4eA, colored by their relative importance. Clockwise: front, back, top and bottom views.

in Table 1.

Table 1.		
cluster color	size	member residues
red	108	59, 61, 62, 64, 65, 66, 67, 69, 70 71, 73, 75, 76, 78, 90, 92, 102, 107 108, 109, 110, 111, 113, 114, 116 119, 122, 123, 125, 126, 127, 130 132, 133, 136, 137, 139, 141, 142 143, 144, 148, 149, 151, 152, 156 157, 161, 163, 164, 165, 167, 191 192, 199, 200, 201, 203, 207, 211 215, 216, 221, 224, 228, 230, 232

continued in next column

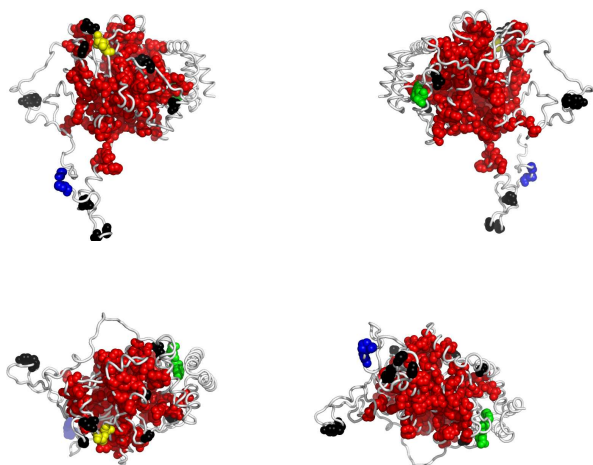


Fig. 4. Residues in 1a4eA, colored according to the cluster they belong to: red, followed by blue and yellow are the largest clusters (see Appendix for the coloring scheme). Clockwise: front, back, top and bottom views. The corresponding Pymol script is attached.

Table 1. continued		
cluster color	size	member residues
		261, 262, 266, 272, 274, 279, 281 294, 295, 297, 298, 300, 306, 315 316, 318, 321, 323, 327, 328, 330 331, 333, 337, 339, 343, 345, 348 349, 351, 353, 355, 357, 362, 364 366, 371, 373, 388, 445, 466
blue	2	27, 29
yellow	2	83, 311
green	2	178, 179

Table 1. Clusters of top ranking residues in 1a4eA.

2.4.2 *Overlap with known functional surfaces at 25% coverage.* The name of the ligand is composed of the source PDB identifier and the heteroatom name used in that file.

Sulfate ion binding site. Table 2 lists the top 25% of residues at the interface with 1a4eSO42 (sulfate ion). The following table (Table 3) suggests possible disruptive replacements for these residues (see Section 3.6).

Table 2.					
res	type	subst's (%)	cvg	noc/ bb	dist (Å)
357	D	D(100)	0.03	1/1	4.60

Table 2. The top 25% of residues in 1a4eA at the interface with sulfate ion. (Field names: res: residue number in the PDB entry; type: amino acid

type; subst: substitutions seen in the alignment; with the percentage of each type in the bracket; noc/bb: number of contacts with the ligand, with the number of contacts realized through backbone atoms given in the bracket; dist: distance of closest approach to the ligand.)

Table 3.		
res	type	disruptive mutations
357	D	(R) (FWH) (KYVCAG) (TQM)

Table 3. List of disruptive mutations for the top 25% of residues in 1a4eA, that are at the interface with sulfate ion.

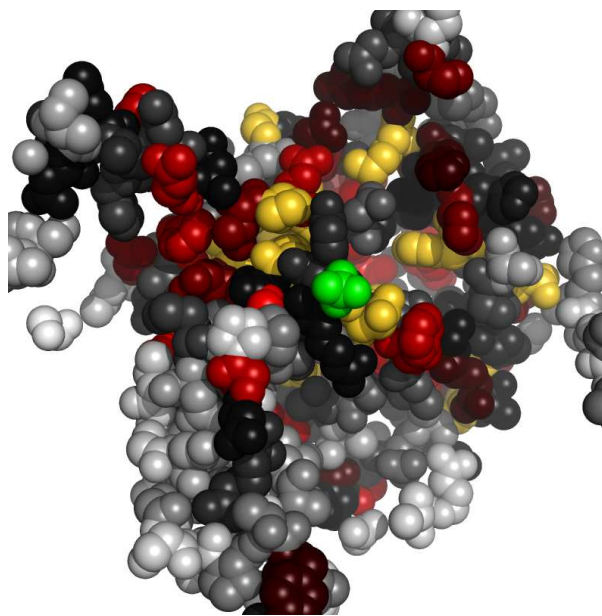


Fig. 5. Residues in 1a4eA, at the interface with sulfate ion, colored by their relative importance. The ligand (sulfate ion) is colored green. Atoms further than 30 Å away from the geometric center of the ligand, as well as on the line of sight to the ligand were removed. (See Appendix for the coloring scheme for the protein chain 1a4eA.)

Figure 5 shows residues in 1a4eA colored by their importance, at the interface with 1a4eSO42.

Interface with 1a4eD. Table 4 lists the top 25% of residues at the interface with 1a4eD. The following table (Table 5) suggests possible disruptive replacements for these residues (see Section 3.6).

Table 4.					
res	type	subst's (%)	cvg	noc/ bb	dist (Å)
67	R	R(100)	0.03	4/4	3.85
152	D	D(100)	0.03	4/0	4.32
357	D	D(100)	0.03	38/9	2.87
65	P	P(98)	0.04	43/16	3.54

continued in next column

Table 4. continued					
res	type	subst's (%)	cvg	noc/ bb	dist (Å)
116	G	L(1) G(97) E(2)	0.04	48/48	3.39
156	F	F(98) G(1)	0.04	14/1	3.49
73	G	G(97) A(2)	0.06	1/1	4.73
62	E	E(97) S(1) M(1)	0.09	22/2	2.81
61	R	R(92) H(6) S(1)	0.10	63/17	2.83
353	F	F(96) V(2) L(1)	0.11	31/0	3.73
59	F	F(92) Q(6) I(1)	0.12	76/5	2.86
66	Q	E(98) Q(1)	0.12	24/9	3.00
323	F	F(97) Y(1) H(1)	0.12	1/1	4.65
157	P	P(96) A(1) S(1) T(1)	0.16	27/9	3.60
64	I	I(94) V(4) N(1)	0.17	13/12	4.02
294	F	F(82) L(16) Y(1)	0.17	8/0	3.76
321	N	N(97) D(1) A(1)	0.18	18/9	3.50
165	R	R(83) P(15) K(1)	0.20	18/0	2.92
167	P	P(94) G(1) A(2) N(2)	0.20	26/24	2.89
40	G	G(94) . (2) S(1) P(1) M(1)	0.21	38/38	2.96
43	G	G(96) L(1) R(1)	0.21	21/21	3.61

continued in next column

Table 4. continued					
res	type	subst's (%)	cvg	noc/ bb	dist (Å)
349	Q	A(1) Q(93) L(3) T(1) M(1) R(1)	0.21	30/2	3.09
114	D	E(81) S(10) G(5) R(1) D(1)	0.22	37/7	3.17
161	H	H(84) R(7) K(7)	0.22	17/0	2.82
186	N	E(93) N(3) S(2) G(1)	0.22	1/0	4.68
318	N	N(94) E(1) I(1) L(1) V(2)	0.24	2/1	4.74
69	P	M(18) V(71) P(8) A(1)	0.25	6/2	4.25

Table 4. The top 25% of residues in 1a4eA at the interface with 1a4eD. (Field names: res: residue number in the PDB entry; type: amino acid type; substs: substitutions seen in the alignment; with the percentage of each type in the bracket; noc/bb: number of contacts with the ligand, with the number of contacts realized through backbone atoms given in the bracket; dist: distance of closest approach to the ligand.)

Table 5.		
res	type	disruptive mutations
67	R	(TD) (SYEVCLAPIG) (FMW) (N)
152	D	(R) (FWH) (KYVCAG) (TQM)
357	D	(R) (FWH) (KYVCAG) (TQM)
65	P	(YR) (TH) (SKECG) (FQWD)
116	G	(R) (FKWH) (YEQM) (NLPDI)
156	F	(KE) (QD) (R) (TN)
73	G	(KER) (QHD) (FYMW) (N)
62	E	(H) (FW) (YR) (CG)
61	R	(D) (T) (E) (LPI)
353	F	(KE) (TQDR) (SNCG) (Y)
59	F	(T) (E) (K) (D)
66	Q	(Y) (FWH) (T) (VCAG)
323	F	(KE) (Q) (D) (T)
157	P	(R) (Y) (H) (K)

continued in next column

Table 5. continued		
res	type	disruptive mutations
64	I	(Y) (R) (H) (T)
294	F	(K) (E) (Q) (R)
321	N	(Y) (H) (FW) (R)
165	R	(T) (Y) (D) (S)
167	P	(YR) (H) (E) (TK)
40	G	(R) (K) (EH) (FW)
43	G	(E) (KR) (D) (YH)
349	Q	(Y) (H) (T) (FW)
114	D	(R) (FW) (H) (Y)
161	H	(E) (T) (D) (M)
186	N	(Y) (FWH) (R) (T)
318	N	(Y) (H) (TR) (FW)
69	P	(Y) (R) (H) (T)

Table 5. List of disruptive mutations for the top 25% of residues in 1a4eA, that are at the interface with 1a4eD.

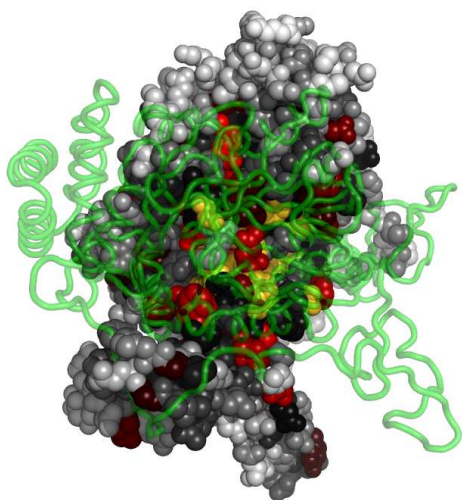


Fig. 6. Residues in 1a4eA, at the interface with 1a4eD, colored by their relative importance. 1a4eD is shown in backbone representation (See Appendix for the coloring scheme for the protein chain 1a4eA.)

Figure 6 shows residues in 1a4eA colored by their importance, at the interface with 1a4eD.

HEM binding site. Table 6 lists the top 25% of residues at the interface with 1a4eAHEM503 (hem). The following table (Table 7) suggests possible disruptive replacements for these residues (see Section 3.6).

Table 6.					
res	type	subst's (%)	cvg	noc/ bb	dist (Å)
67	R	R(100)	0.03	35/5	2.82
107	R	R(100)	0.03	22/3	2.91
126	G	G(100)	0.03	4/4	3.60
351	R	R(100)	0.03	75/1	3.19
355	Y	Y(100)	0.03	109/5	1.89
362	R	R(100)	0.03	15/0	2.84
156	F	F(98)	0.04	64/0	3.48
		G(1)			
70	H	H(98)	0.05	51/0	3.41
		Y(1)			
148	F	F(98)	0.05	20/0	3.76
		H(1)			
141	V	V(97)	0.08	23/12	3.62
		T(1)			
		L(1)			
143	N	N(94)	0.08	34/6	3.34
		L(4)			
		C(1)			
215	H	H(96)	0.10	9/0	3.89
		N(2)			
		R(1)			
127	F	F(96)	0.12	4/4	3.89
		W(1)			
		M(2)			
330	A	A(97)	0.15	1/1	4.99
		T(2)			
331	F	F(95)	0.16	17/3	3.57
		Y(1)			
		L(3)			
109	S	S(94)	0.17	5/0	4.21
		T(4)			
		A(1)			
69	P	M(18)	0.25	26/14	3.70
		V(71)			
		P(8)			
		A(1)			
142	Y	G(85)	0.25	16/16	3.15
		F(3)			
		C(2)			
		Y(6)			
		N(1)			
		A(1)			

Table 6. The top 25% of residues in 1a4eA at the interface with HEM.(Field names: res: residue number in the PDB entry; type: amino acid type; substs: substitutions seen in the alignment; with the percentage of each type in the bracket; noc/bb: number of contacts with the ligand, with the number of contacts realized through backbone atoms given in the bracket; dist: distance of closest approach to the ligand.)

Table 7.		
res	type	disruptive mutations
67	R	(TD) (SYEVCLAPIG) (FMW) (N)
107	R	(TD) (SYEVCLAPIG) (FMW) (N)
126	G	(KER) (FQMWHD) (NYLPI) (SVA)
351	R	(TD) (SYEVCLAPIG) (FMW) (N)
355	Y	(K) (QM) (NEVLAPIR) (D)
362	R	(TD) (SYEVCLAPIG) (FMW) (N)
156	F	(KE) (QD) (R) (TN)
70	H	(E) (QM) (KD) (TNVLAPI)
148	F	(E) (K) (TQD) (SNCG)
141	V	(R) (K) (Y) (E)
143	N	(Y) (H) (FW) (R)
215	H	(E) (T) (D) (M)
127	F	(KE) (T) (D) (Q)
330	A	(KR) (E) (YQH) (D)
331	F	(K) (E) (Q) (R)
109	S	(KR) (QH) (FMW) (E)
69	P	(Y) (R) (H) (T)
142	Y	(K) (E) (Q) (MR)

Table 7. List of disruptive mutations for the top 25% of residues in 1a4eA, that are at the interface with HEM.

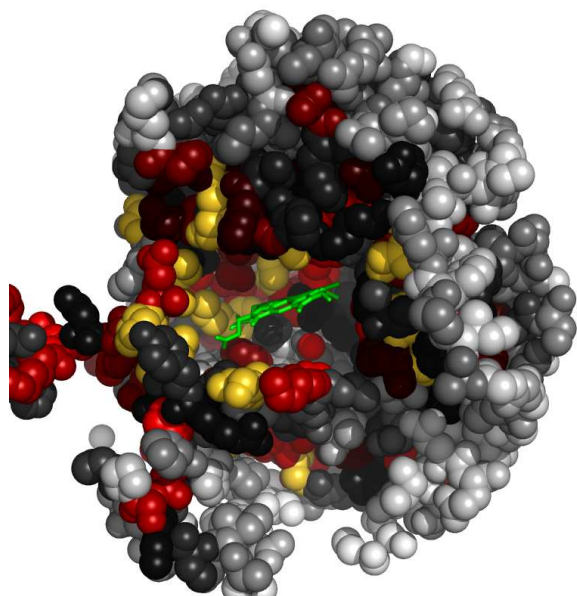


Fig. 7. Residues in 1a4eA, at the interface with HEM, colored by their relative importance. The ligand (HEM) is colored green. Atoms further than 30 Å away from the geometric center of the ligand, as well as on the line of sight to the ligand were removed. (See Appendix for the coloring scheme for the protein chain 1a4eA.)

Figure 7 shows residues in 1a4eA colored by their importance, at the interface with 1a4eAHEM503.

Azide ion binding site. Table 8 lists the top 25% of residues at the interface with 1a4eAAZI504 (azide ion). The following table (Table

9) suggests possible disruptive replacements for these residues (see Section 3.6).

Table 8.					
res	type	subst's (%)	cvg	noc/ bb	dist (Å)
355	Y	Y(100)	0.03	2/0	3.98
156	F	F(98)	0.04	7/0	3.37
70	H	G(1) H(98) Y(1)	0.05	12/0	2.95
148	F	F(98) H(1)	0.05	8/0	3.23
111	V	V(96) T(2) A(1)	0.06	4/0	4.20
143	N	N(94) L(4) C(1)	0.08	5/0	3.20
69	P	M(18) V(71) P(8) A(1)	0.25	4/0	3.87

Table 8. The top 25% of residues in 1a4eA at the interface with azide ion. (Field names: res: residue number in the PDB entry; type: amino acid type; substs: substitutions seen in the alignment; with the percentage of each type in the bracket; noc/bb: number of contacts with the ligand, with the number of contacts realized through backbone atoms given in the bracket; dist: distance of closest approach to the ligand.)

Table 9.		
res	type	disruptive mutations
355	Y	(K) (QM) (NEVLAPIR) (D)
156	F	(KE) (QD) (R) (TN)
70	H	(E) (QM) (KD) (TNVLAPI)
148	F	(E) (K) (TQD) (SNCG)
111	V	(KR) (E) (Y) (QH)
143	N	(Y) (H) (FW) (R)
69	P	(Y) (R) (H) (T)

Table 9. List of disruptive mutations for the top 25% of residues in 1a4eA, that are at the interface with azide ion.

Figure 8 shows residues in 1a4eA colored by their importance, at the interface with 1a4eAAZI504.

HEM binding site. Table 10 lists the top 25% of residues at the interface with 1a4eDHEM503 (hem). The following table (Table 11) suggests possible disruptive replacements for these residues (see Section 3.6).

Table 10.					
res	type	subst's (%)	cvg	noc/ bb	dist (Å)
59	F	F(92)	0.12	1/0	4.81

continued in next column

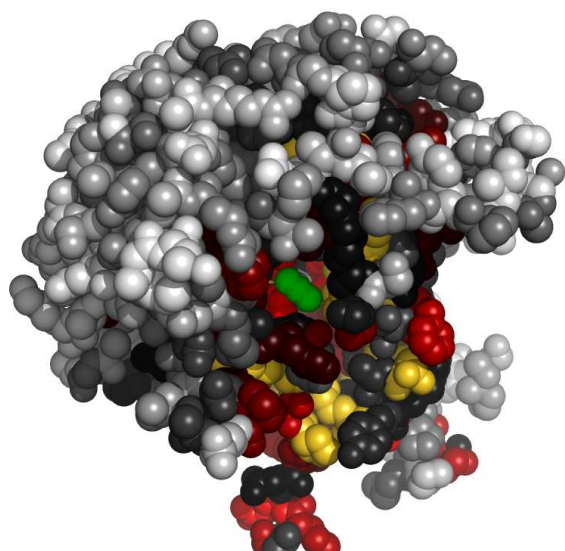


Fig. 8. Residues in 1a4eA, at the interface with azide ion, colored by their relative importance. The ligand (azide ion) is colored green. Atoms further than 30Å away from the geometric center of the ligand, as well as on the line of sight to the ligand were removed. (See Appendix for the coloring scheme for the protein chain 1a4eA.)

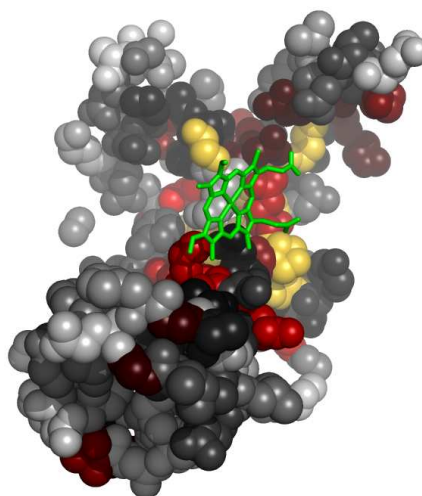


Fig. 9. Residues in 1a4eA, at the interface with HEM, colored by their relative importance. The ligand (HEM) is colored green. Atoms further than 30Å away from the geometric center of the ligand, as well as on the line of sight to the ligand were removed. (See Appendix for the coloring scheme for the protein chain 1a4eA.)

Table 10. continued					
res	type	subst's (%)	cvg	noc/ bb	dist (Å)
		Q (6)			
		I (1)			

Table 10. The top 25% of residues in 1a4eA at the interface with HEM. (Field names: res: residue number in the PDB entry; type: amino acid type; substs: substitutions seen in the alignment; with the percentage of each type in the bracket; noc/bb: number of contacts with the ligand, with the number of contacts realized through backbone atoms given in the bracket; dist: distance of closest approach to the ligand.)

Table 11.		
res	type	disruptive mutations
59	F	(T) (E) (K) (D)

Table 11. List of disruptive mutations for the top 25% of residues in 1a4eA, that are at the interface with HEM.

Figure 9 shows residues in 1a4eA colored by their importance, at the interface with 1a4eDHEM503.

Interface with 1a4eB. Table 12 lists the top 25% of residues at the interface with 1a4eB. The following table (Table 13) suggests possible disruptive replacements for these residues (see Section 3.6).

Table 12.					
res	type	subst's (%)	cvg	noc/ bb	dist (Å)
136	G	G (100)	0.03	26/26	3.32
357	D	D (100)	0.03	1/0	4.64
373	N	N (100)	0.03	1/1	4.89
364	G	G (98) W (1)	0.06	2/2	4.90
371	P	P (97) A (2)	0.06	11/0	3.45
62	E	E (97) S (1) M (1)	0.09	47/24	2.98
61	R	R (92) H (6) S (1)	0.10	43/15	3.10
353	F	F (96) V (2) L (1)	0.11	8/0	3.90
388	G	G (98) P (1)	0.11	39/39	2.92
323	F	F (97) Y (1) H (1)	0.12	57/0	3.18
366	N	N (96)	0.13	19/7	2.79

continued in next column

Table 12. continued					
res	type	subst's (%)	cvg	noc/ bb	dist (Å)
137	N	H(3)	0.14	22/16	2.98
		N(95)			
		I(3)			
328	Q	V(1)	0.16	25/0	3.05
		Q(95)			
		M(1)			
		N(2)			
64	I	S(1)	0.17	7/0	3.62
		I(94)			
		V(4)			
321	N	N(1)	0.18	50/7	2.87
		N(97)			
		D(1)			
29	P	A(1)	0.20	21/4	3.31
		P(89)			
		I(4)			
27	G	K(5)	0.21	41/41	2.73
		.(1)			
		G(97)			
337	V	K(1)	0.21	6/4	3.99
		.(1)			
		V(80)			
349	Q	P(16)	0.21	19/4	3.15
		I(3)			
		Q(93)			
		L(3)			
		T(1)			
M(1)					
R(1)					

Table 12. The top 25% of residues in 1a4eA at the interface with 1a4eB. (Field names: res: residue number in the PDB entry; type: amino acid type; substs: substitutions seen in the alignment; with the percentage of each type in the bracket; noc/bb: number of contacts with the ligand, with the number of contacts realized through backbone atoms given in the bracket; dist: distance of closest approach to the ligand.)

Table 13.		
res	type	disruptive mutations
136	G	(KER) (FQMWHD) (NYLPI) (SVA)
357	D	(R) (FWH) (KYVCAG) (TQM)
373	N	(Y) (FTWH) (SEVCARG) (MD)
364	G	(KE) (R) (QD) (M)
371	P	(YR) (H) (TKE) (SQCDG)
62	E	(H) (FW) (YR) (CG)
61	R	(D) (T) (E) (LPI)
353	F	(KE) (TQDR) (SNCG) (Y)
388	G	(R) (KE) (H) (FYQWD)
323	F	(KE) (Q) (D) (T)
366	N	(TY) (E) (SFVCAWG) (MHDR)
137	N	(Y) (H) (TR) (E)

continued in next column

Table 13. continued		
res	type	disruptive mutations
328	Q	(Y) (H) (FW) (T)
64	I	(Y) (R) (H) (T)
321	N	(Y) (H) (FW) (R)
29	P	(Y) (TR) (H) (SCG)
27	G	(E) (FW) (R) (D)
337	V	(YR) (KE) (H) (QD)
349	Q	(Y) (H) (T) (FW)

Table 13. List of disruptive mutations for the top 25% of residues in 1a4eA, that are at the interface with 1a4eB.

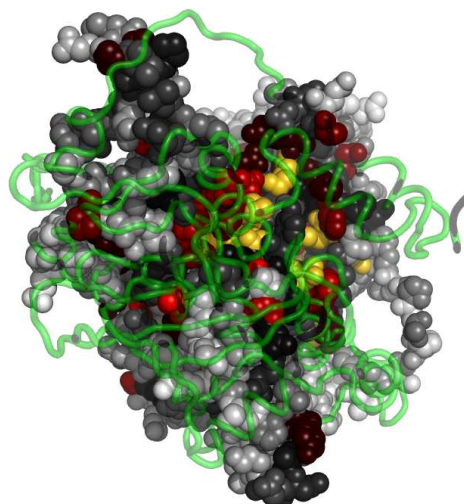


Fig. 10. Residues in 1a4eA, at the interface with 1a4eB, colored by their relative importance. 1a4eB is shown in backbone representation (See Appendix for the coloring scheme for the protein chain 1a4eA.)

Figure 10 shows residues in 1a4eA colored by their importance, at the interface with 1a4eB.

Interface with 1a4eC. Table 14 lists the top 25% of residues at the interface with 1a4eC. The following table (Table 15) suggests possible disruptive replacements for these residues (see Section 3.6).

Table 14.					
res	type	subst's (%)	cvg	noc/ bb	dist (Å)
357	D	D(100)	0.03	1/0	3.95
61	R	R(92)	0.10	3/0	3.81
		H(6)			
		S(1)			
353	F	F(96)	0.11	6/0	3.62

continued in next column

res	type	subst's (%)	cvg	noc/ bb	dist (Å)
157	P	V(2)	0.16	4/2	4.44
		L(1)			
		P(96)			
		A(1)			
		S(1)			
179	D	D(98)	0.16	45/6	2.97
		E(1)			
		T(1)			
167	P	P(94)	0.20	28/3	3.41
		G(1)			
		A(2)			
		N(2)			
161	H	H(84)	0.22	44/5	2.79
		R(7)			
402	Y	Y(95)	0.24	77/9	2.74
		K(1)			
		H(1)			
		I(1)			
		V(1)			

Table 14. The top 25% of residues in 1a4eA at the interface with 1a4eC. (Field names: res: residue number in the PDB entry; type: amino acid type; substs: substitutions seen in the alignment; with the percentage of each type in the bracket; noc/ bb: number of contacts with the ligand, with the number of contacts realized through backbone atoms given in the bracket; dist: distance of closest approach to the ligand.)

res	type	disruptive mutations
357	D	(R) (FWH) (KYVCAG) (TQM)
61	R	(D) (T) (E) (LPI)
353	F	(KE) (TQDR) (SNCG) (Y)
157	P	(R) (Y) (H) (K)
179	D	(R) (FWH) (YVCAG) (K)
167	P	(YR) (H) (E) (TK)
161	H	(E) (T) (D) (M)
402	Y	(K) (EQ) (M) (R)

Table 15. List of disruptive mutations for the top 25% of residues in 1a4eA, that are at the interface with 1a4eC.

Figure 11 shows residues in 1a4eA colored by their importance, at the interface with 1a4eC.

Sulfate ion binding site. Table 16 lists the top 25% of residues at the interface with 1a4eSO41 (sulfate ion). The following table (Table 17) suggests possible disruptive replacements for these residues (see Section 3.6).

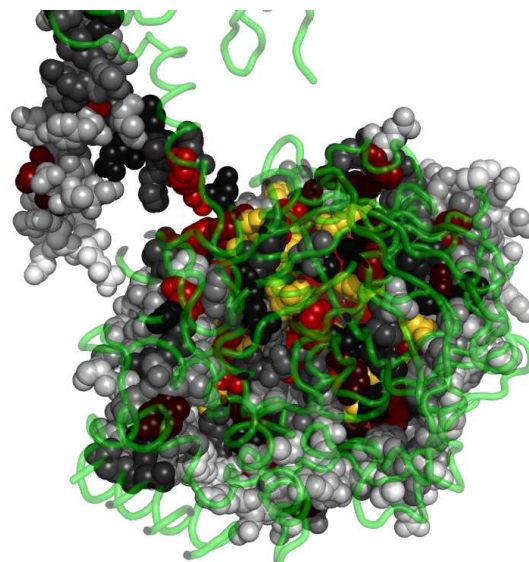


Fig. 11. Residues in 1a4eA, at the interface with 1a4eC, colored by their relative importance. 1a4eC is shown in backbone representation (See Appendix for the coloring scheme for the protein chain 1a4eA.)

res	type	subst's (%)	cvg	noc/ bb	dist (Å)
61	R	R(92) H(6) S(1)	0.10	20/0	2.72

Table 16. The top 25% of residues in 1a4eA at the interface with sulfate ion. (Field names: res: residue number in the PDB entry; type: amino acid type; substs: substitutions seen in the alignment; with the percentage of each type in the bracket; noc/ bb: number of contacts with the ligand, with the number of contacts realized through backbone atoms given in the bracket; dist: distance of closest approach to the ligand.)

res	type	disruptive mutations
61	R	(D) (T) (E) (LPI)

Table 17. List of disruptive mutations for the top 25% of residues in 1a4eA, that are at the interface with sulfate ion.

Figure 12 shows residues in 1a4eA colored by their importance, at the interface with 1a4eSO41.

3 NOTES ON USING TRACE RESULTS

3.1 Coverage

Trace results are commonly expressed in terms of coverage: the residue is important if its "coverage" is small - that is if it belongs to some small top percentage of residues [100% is all of the residues

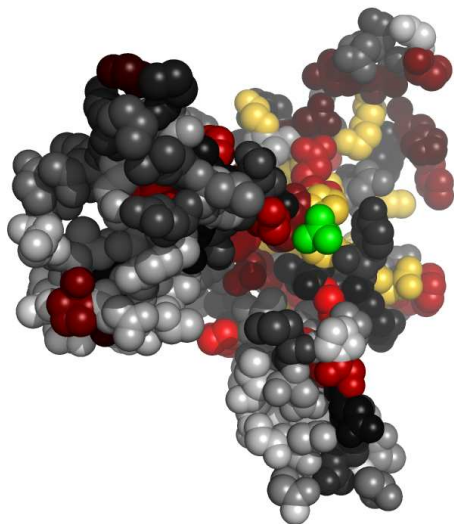


Fig. 12. Residues in 1a4eA, at the interface with sulfate ion, colored by their relative importance. The ligand (sulfate ion) is colored green. Atoms further than 30\AA away from the geometric center of the ligand, as well as on the line of sight to the ligand were removed. (See Appendix for the coloring scheme for the protein chain 1a4eA.)

in a chain], according to trace. The ET results are presented in the form of a table, usually limited to top 25% percent of residues (or to some nearby percentage), sorted by the strength of the presumed evolutionary pressure. (I.e., the smaller the coverage, the stronger the pressure on the residue.) Starting from the top of that list, mutating a couple of residues should affect the protein somehow, with the exact effects to be determined experimentally.

3.2 Known substitutions

One of the table columns is “substitutions” - other amino acid types seen at the same position in the alignment. These amino acid types may be interchangeable at that position in the protein, so if one wants to affect the protein by a point mutation, they should be avoided. For example if the substitutions are “RVK” and the original protein has an R at that position, it is advisable to try anything, but RVK. Conversely, when looking for substitutions which will *not* affect the protein, one may try replacing, R with K, or (perhaps more surprisingly), with V. The percentage of times the substitution appears in the alignment is given in the immediately following bracket. No percentage is given in the cases when it is smaller than 1%. This is meant to be a rough guide - due to rounding errors these percentages often do not add up to 100%.

3.3 Surface

To detect candidates for novel functional interfaces, first we look for residues that are solvent accessible (according to DSSP program) by at least 10\AA^2 , which is roughly the area needed for one water molecule to come in the contact with the residue. Furthermore, we require that these residues form a “cluster” of residues which have neighbor within 5\AA from any of their heavy atoms.

Note, however, that, if our picture of protein evolution is correct, the neighboring residues which *are not* surface accessible might be equally important in maintaining the interaction specificity - they should not be automatically dropped from consideration when choosing the set for mutagenesis. (Especially if they form a cluster with the surface residues.)

3.4 Number of contacts

Another column worth noting is denoted “noc/bb”; it tells the number of contacts heavy atoms of the residue make across the interface, as well as how many of them are realized through the backbone atoms (if all or most contacts are through the backbone, mutation presumably won’t have strong impact). Two heavy atoms are considered to be “in contact” if their centers are closer than 5\AA .

3.5 Annotation

If the residue annotation is available (either from the pdb file or from other sources), another column, with the header “annotation” appears. Annotations carried over from PDB are the following: site (indicating existence of related site record in PDB), S-S (disulfide bond forming residue), hb (hydrogen bond forming residue, jb (james bond forming residue), and sb (for salt bridge forming residue).

3.6 Mutation suggestions

Mutation suggestions are completely heuristic and based on complementarity with the substitutions found in the alignment. Note that they are meant to be **disruptive** to the interaction of the protein with its ligand. The attempt is made to complement the following properties: small [*AVGSTC*], medium [*LPNQDEMIK*], large [*WFYHR*], hydrophobic [*LPVAMWFI*], polar [*GTCY*]; positively [*KHR*], or negatively [*DE*] charged, aromatic [*WFYH*], long aliphatic chain [*EKRQM*], OH-group possession [*SDETY*], and NH₂ group possession [*NQRK*]. The suggestions are listed according to how different they appear to be from the original amino acid, and they are grouped in round brackets if they appear equally disruptive. From left to right, each bracketed group of amino acid types resembles more strongly the original (i.e. is, presumably, less disruptive) These suggestions are tentative - they might prove disruptive to the fold rather than to the interaction. Many researcher will choose, however, the straightforward alanine mutations, especially in the beginning stages of their investigation.

4 APPENDIX

4.1 File formats

Files with extension “ranks_sorted” are the actual trace results. The fields in the table in this file:

- alignment# number of the position in the alignment
- residue# residue number in the PDB file
- type amino acid type
- rank rank of the position according to older version of ET
- variability has two subfields:
 1. number of different amino acids appearing in in this column of the alignment
 2. their type

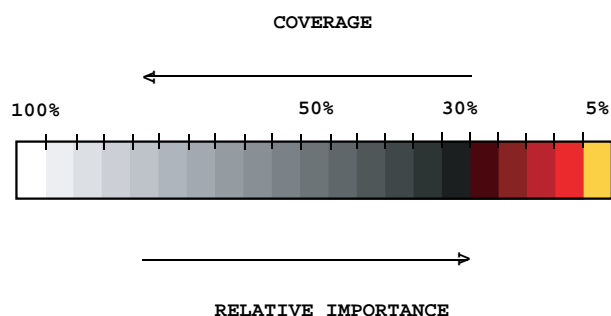


Fig. 13. Coloring scheme used to color residues by their relative importance.

- rho ET score - the smaller this value, the lesser variability of this position across the branches of the tree (and, presumably, the greater the importance for the protein)
- cvg coverage - percentage of the residues on the structure which have this rho or smaller
- gaps percentage of gaps in this column

4.2 Color schemes used

The following color scheme is used in figures with residues colored by cluster size: black is a single-residue cluster; clusters composed of more than one residue colored according to this hierarchy (ordered by descending size): red, blue, yellow, green, purple, azure, turquoise, brown, coral, magenta, LightSalmon, SkyBlue, violet, gold, bisque, LightSlateBlue, orchid, RosyBrown, MediumAquamarine, DarkOliveGreen, CornflowerBlue, grey55, burlywood, LimeGreen, tan, DarkOrange, DeepPink, maroon, BlanchedAlmond.

The colors used to distinguish the residues by the estimated evolutionary pressure they experience can be seen in Fig. 13.

4.3 Credits

4.3.1 Alistat *alistat* reads a multiple sequence alignment from the file and shows a number of simple statistics about it. These statistics include the format, the number of sequences, the total number of residues, the average and range of the sequence lengths, and the alignment length (e.g. including gap characters). Also shown are some percent identities. A percent pairwise alignment identity is defined as $(\text{idents} / \text{MIN}(\text{len1}, \text{len2}))$ where *idents* is the number of exact identities and *len1*, *len2* are the unaligned lengths of the two sequences. The "average percent identity", "most related pair", and "most unrelated pair" of the alignment are the average, maximum, and minimum of all $(N)(N-1)/2$ pairs, respectively. The "most distant seq" is calculated by finding the maximum pairwise identity (best relative) for all *N* sequences, then finding the minimum of these *N* numbers (hence, the most outlying sequence). *alistat* is copyrighted by HHMI/Washington University School of Medicine, 1992-2001, and freely distributed under the GNU General Public License.

4.3.2 CE To map ligand binding sites from different source structures, *report_maker* uses the CE program:

<http://cl.sdsc.edu/>. Shindyalov IN, Bourne PE (1998) "Protein structure alignment by incremental combinatorial extension (CE) of the optimal path". *Protein Engineering* 11(9) 739-747.

4.3.3 DSSP In this work a residue is considered solvent accessible if the DSSP program finds it exposed to water by at least 10\AA^2 , which is roughly the area needed for one water molecule to come in the contact with the residue. DSSP is copyrighted by W. Kabsch, C. Sander and MPI-MF, 1983, 1985, 1988, 1994 1995, CMBI version by Elmar.Krieger@cmbi.kun.nl November 18,2002,

<http://www.cmbi.kun.nl/gv/dssp/descrip.html>.

4.3.4 HSSP Whenever available, *report_maker* uses HSSP alignment as a starting point for the analysis (sequences shorter than 75% of the query are taken out, however); R. Schneider, A. de Daruvar, and C. Sander. "The HSSP database of protein structure-sequence alignments." *Nucleic Acids Res.*, 25:226-230, 1997.

<http://swift.cmbi.kun.nl/swift/hssp/>

4.3.5 LaTeX The text for this report was processed using L^AT_EX; Leslie Lamport, "LaTeX: A Document Preparation System Addison-Wesley," Reading, Mass. (1986).

4.3.6 Muscle When making alignments "from scratch", *report_maker* uses Muscle alignment program: Edgar, Robert C. (2004), "MUSCLE: multiple sequence alignment with high accuracy and high throughput." *Nucleic Acids Research* 32(5), 1792-97.

<http://www.drive5.com/muscle/>

4.3.7 Pymol The figures in this report were produced using Pymol. The scripts can be found in the attachment. Pymol is an open-source application copyrighted by DeLano Scientific LLC (2005). For more information about Pymol see <http://pymol.sourceforge.net/>. (Note for Windows users: the attached package needs to be unzipped for Pymol to read the scripts and launch the viewer.)

4.4 Note about ET Viewer

Dan Morgan from the Lichtarge lab has developed a visualization tool specifically for viewing trace results. If you are interested, please visit:

<http://mammoth.bcm.tmc.edu/traceview/>

The viewer is self-unpacking and self-installing. Input files to be used with ETV (extension .etvx) can be found in the attachment to the main report.

4.5 Citing this work

The method used to rank residues and make predictions in this report can be found in Mihalek, I., I. Reš, O. Lichtarge. (2004). "A Family of Evolution-Entropy Hybrid Methods for Ranking of Protein Residues by Importance" *J. Mol. Bio.* **336**: 1265-82. For the original version of ET see O. Lichtarge, H.Bourne and F. Cohen (1996). "An Evolutionary Trace Method Defines Binding Surfaces Common to Protein Families" *J. Mol. Bio.* **257**: 342-358.

report_maker itself is described in Mihalek I., I. Res and O. Lichtarge (2006). "Evolutionary Trace Report Maker: a new type of service for comparative analysis of proteins." *Bioinformatics* **22**:1656-7.

4.6 About report_maker

report_maker was written in 2006 by Ivana Mihalek. The 1D ranking visualization program was written by Ivica Reš. **report_maker** is copyrighted by Lichtarge Lab, Baylor College of Medicine, Houston.

4.7 Attachments

The following files should accompany this report:

- 1a4eA.complex.pdb - coordinates of 1a4eA with all of its interacting partners
- 1a4eA.etvx - ET viewer input file for 1a4eA
- 1a4eA.cluster_report.summary - Cluster report summary for 1a4eA
- 1a4eA.ranks - Ranks file in sequence order for 1a4eA
- 1a4eA.clusters - Cluster descriptions for 1a4eA
- 1a4eA.msf - the multiple sequence alignment used for the chain 1a4eA
- 1a4eA.descr - description of sequences used in 1a4eA.msf
- 1a4eA.ranks_sorted - full listing of residues and their ranking for 1a4eA
- 1a4eA.1a4eSO42.if.pml - Pymol script for Figure 5
- 1a4eA.cbcvg - used by other 1a4eA – related pymol scripts
- 1a4eA.1a4eD.if.pml - Pymol script for Figure 6
- 1a4eA.1a4eAHEM503.if.pml - Pymol script for Figure 7
- 1a4eA.1a4eAAZI504.if.pml - Pymol script for Figure 8
- 1a4eA.1a4eDHEM503.if.pml - Pymol script for Figure 9
- 1a4eA.1a4eB.if.pml - Pymol script for Figure 10
- 1a4eA.1a4eC.if.pml - Pymol script for Figure 11
- 1a4eA.1a4eSO41.if.pml - Pymol script for Figure 12