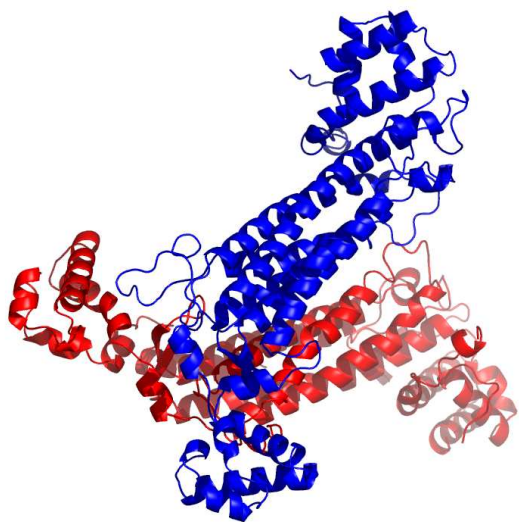


# 1aos

Evolutionary trace report by **report\_maker**

January 18, 2010



4.3.1	<b>Alistat</b>	13
4.3.2	<b>CE</b>	13
4.3.3	<b>DSSP</b>	13
4.3.4	<b>HSSP</b>	13
4.3.5	<b>LaTex</b>	13
4.3.6	<b>Muscle</b>	13
4.3.7	<b>Pymol</b>	13
4.4	Note about ET Viewer	13
4.5	Citing this work	13
4.6	About report_maker	13
4.7	Attachments	13

## CONTENTS

### 1 Introduction

### 2 Chain 1aosA

- 2.1 P04424 overview
- 2.2 Multiple sequence alignment for 1aosA
- 2.3 Residue ranking in 1aosA
- 2.4 Top ranking residues in 1aosA and their position on the structure
  - 2.4.1 Clustering of residues at 25% coverage.
  - 2.4.2 Overlap with known functional surfaces at 25% coverage.
  - 2.4.3 Possible novel functional surfaces at 25% coverage.

### 3 Notes on using trace results

- 3.1 Coverage
- 3.2 Known substitutions
- 3.3 Surface
- 3.4 Number of contacts
- 3.5 Annotation
- 3.6 Mutation suggestions

### 4 Appendix

- 4.1 File formats
- 4.2 Color schemes used
- 4.3 Credits

## 1 INTRODUCTION

From the original Protein Data Bank entry (PDB id 1aos):

**Title:** Human argininosuccinate lyase

**Compound:** Mol id: 1; molecule: argininosuccinate lyase; chain: a, b; ec: 4.3.2.1; engineered: yes

**Organism, scientific name:** Homo Sapiens;

1aos contains a single unique chain 1aosA (434 residues long) and its homologue 1aosB.

## 2 CHAIN 1AOSA

### 1 2.1 P04424 overview

1 From SwissProt, id P04424, 97% identical to 1aosA:

1 **Description:** Argininosuccinate lyase (EC 4.3.2.1) (Argininosuccinase) (ASAL).

1 **Organism, scientific name:** Homo sapiens (Human).

1 **Taxonomy:** Eukaryota; Metazoa; Chordata; Craniata; Vertebrata; Euteleostomi; Mammalia; Eutheria; Euarchontoglires; Primates; Catarrhini; Hominidae; Homo.

2 **Catalytic activity:** (N(omega)-L-arginino)succinate = fumarate + L-arginine.

3 **Pathway:** Arginine biosynthesis; eighth (last) step.

8 **Pathway:** Urea cycle.

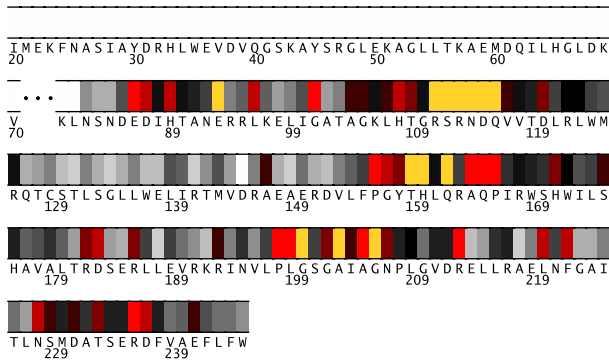
**Subunit:** Homotetramer.

11 **Disease:** Defects in ASL are the cause of argininosuccinicaciduria [MIM:207900]. The disease is characterized by mental and physical retardation, liver enlargement, skin lesions, dry and brittle hair showing trichorrhexis nodosa microscopically and fluorescing red, convulsions, and episodic unconsciousness.

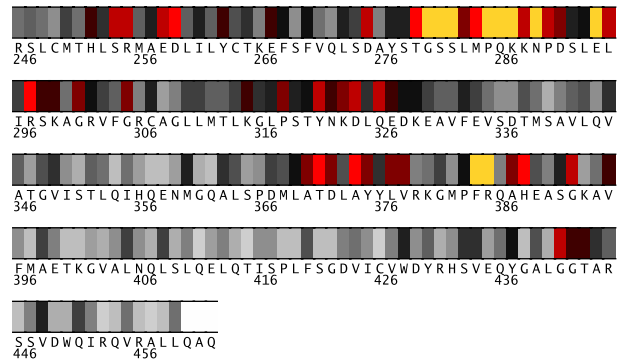
12 **Similarity:** Belongs to the lyase 1 family. Argininosuccinate lyase subfamily.

12 **Caution:** Ref.2 sequence differs from that shown in positions 387 to 452 due to a frameshift.

12 **About:** This Swiss-Prot entry is copyright. It is produced through a collaboration between the Swiss Institute of Bioinformatics and the EMBL outstation - the European Bioinformatics Institute. There are



**Fig. 1.** Residues 20-245 in IaosA colored by their relative importance. (See Appendix, Fig.11, for the coloring scheme.)



**Fig. 2.** Residues 246-462 in IaosA colored by their relative importance. (See Appendix, Fig.11, for the coloring scheme.)

no restrictions on its use as long as its content is in no way modified and this statement is not removed.

## 2.2 Multiple sequence alignment for IaosA

For the chain IaosA, the alignment IaosA.msf (attached) with 743 sequences was used. The alignment was downloaded from the HSSP database, and fragments shorter than 75% of the query as well as duplicate sequences were removed. It can be found in the attachment to this report, under the name of IaosA.msf. Its statistics, from the *alistat* program are the following:

```

Format:                MSF
Number of sequences:   743
Total number of residues: 297280
Smallest:              327
Largest:               434
Average length:       400.1
Alignment length:     434
Average identity:     45%
Most related pair:    99%
Most unrelated pair:  18%
Most distant seq:     37%

```

Furthermore, <1% of residues show as conserved in this alignment.

The alignment consists of 3% eukaryotic (<1% vertebrata, <1% arthropoda, 2% fungi, <1% plantae), 13% prokaryotic, and 1% archaean sequences. (Descriptions of some sequences were not readily available.) The file containing the sequence descriptions can be found in the attachment, under the name IaosA.descr.

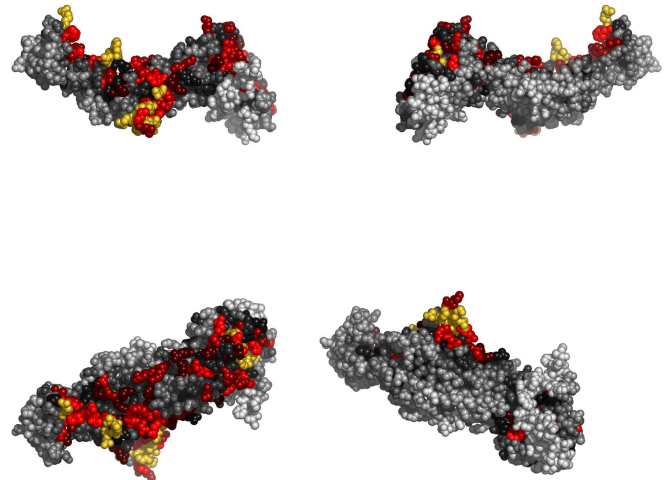
## 2.3 Residue ranking in IaosA

The IaosA sequence is shown in Figs. 1–2, with each residue colored according to its estimated importance. The full listing of residues in IaosA can be found in the file called IaosA.ranks.sorted in the attachment.

## 2.4 Top ranking residues in IaosA and their position on the structure

In the following we consider residues ranking among top 25% of residues in the protein. Figure 3 shows residues in IaosA colored by their

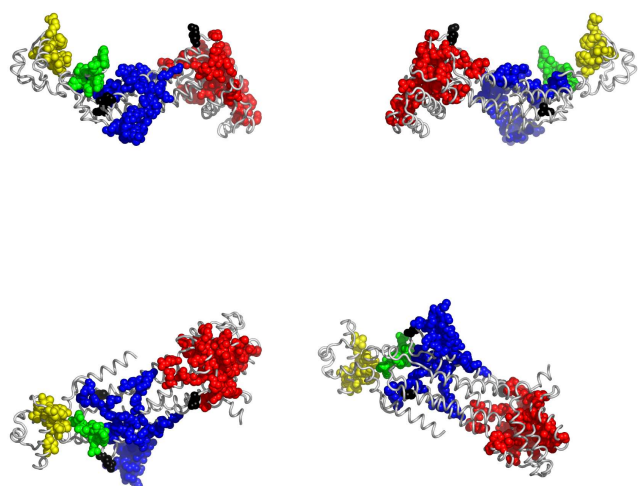
importance: bright red and yellow indicate more conserved/important residues (see Appendix for the coloring scheme). A Pymol script for producing this figure can be found in the attachment.



**Fig. 3.** Residues in IaosA, colored by their relative importance. Clockwise: front, back, top and bottom views.

**2.4.1 Clustering of residues at 25% coverage.** Fig. 4 shows the top 25% of all residues, this time colored according to clusters they belong to. The clusters in Fig.4 are composed of the residues listed in Table 1.

Table 1.		
cluster color	size	member residues
red	46	86, 87, 89, 93, 96, 101, 104, 105
<i>continued in next column</i>		



**Fig. 4.** Residues in 1aosA, colored according to the cluster they belong to: red, followed by blue and yellow are the largest clusters (see Appendix for the coloring scheme). Clockwise: front, back, top and bottom views. The corresponding Pymol script is attached.

Table 1. continued		
cluster color	size	member residues
		107, 108, 109, 111, 112, 113, 114 115, 116, 117, 120, 193, 198, 199 200, 202, 203, 204, 205, 206, 207 213, 220, 222, 228, 229, 231, 233 236, 237, 241, 318, 321, 322, 323 324, 326, 327
blue	36	171, 172, 175, 182, 183, 186, 252 254, 255, 258, 259, 263, 275, 279 280, 281, 282, 283, 284, 285, 286 287, 288, 289, 290, 291, 294, 295 297, 298, 299, 301, 305, 441, 442 443
yellow	13	370, 371, 372, 374, 375, 377, 378 384, 385, 387, 388, 392, 395
green	9	156, 157, 158, 159, 160, 162, 164 165, 166

**Table 1.** Clusters of top ranking residues in 1aosA.

**2.4.2 Overlap with known functional surfaces at 25% coverage.** The name of the ligand is composed of the source PDB identifier and the heteroatom name used in that file.

**Interface with 1aosB.** Table 2 lists the top 25% of residues at the interface with 1aosB. The following table (Table 3) suggests possible disruptive replacements for these residues (see Section 3.6).

Table 2.					
res	type	subst's (%)	cvg	noc/ bb	dist (Å)
285	P	P(99).	0.01	1/0	4.68
287	K	K(99).	0.01	56/12	2.87
289	N	N(99).	0.01	33/6	2.98
159	T	T(99)S	0.02	6/0	3.73
162	Q	Q(98)RM K	0.02	83/9	2.93
294	E	E(99)A.	0.02	20/0	2.62
160	H	H(99)QY	0.03	63/12	2.58
286	Q	H(2) Q(95) N(2).	0.04	11/6	3.76
164	A	A(98) G(1)ST	0.06	15/11	3.46
388	H	Y(11) H(88).Q	0.06	13/4	3.60
371	T	V(2) T(95)AL QSMN	0.07	11/4	3.99
284	M	M(98)LT F.	0.08	40/8	3.37
156	P	P(95)IS F(1) V(1)LTA	0.09	1/0	4.59
324	D	D(98).G EQANS	0.10	2/0	4.60
258	E	M(1) E(92) Q(1) W(1)DFS TANGKH	0.12	10/0	3.23
288	K	K(88) R(10)VI QH.	0.12	13/12	2.91
290	P	P(93) A(4)SML	0.13	15/8	3.08
392	G	A(11) G(87)S. KR	0.13	2/2	3.75
283	L	I(70) M(3) L(25)VA	0.15	46/13	3.02
291	D	D(95)I V(1)ALF CSY.	0.15	6/1	3.50
158	Y	Y(58) F(33) M(1)	0.17	17/0	2.69

continued in next column

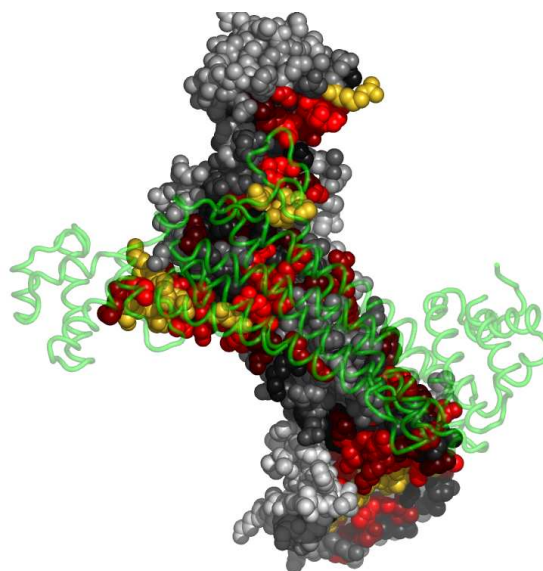
Table 2. continued					
res	type	subst's (%)	cvg	noc/ bb	dist (Å)
370	A	R(3)L	0.17	8/4	2.98
		K(2)CH			
		T(1)			
		A(92)			
267	E	S(4)VIL	0.20	70/5	2.69
		M			
		N(4)			
		E(67)			
		Q(14)A			
		P(2)			
		R(5)SIH			
315	K	G(1)	0.20	50/5	2.96
		L(1)DFM			
		.K			
		N(2)			
		K(93)RS			
395	V	THL(1).	0.23	9/0	3.38
		GQAV			
		I(2)G			
		A(2)S.T			
		MCE			

**Table 2.** The top 25% of residues in IaosA at the interface with IaosB. (Field names: res: residue number in the PDB entry; type: amino acid type; substs: substitutions seen in the alignment; with the percentage of each type in the bracket; noc/bb: number of contacts with the ligand, with the number of contacts realized through backbone atoms given in the bracket; dist: distance of closest approach to the ligand.)

Table 3.		
res	type	disruptive mutations
285	P	(Y)(TH)(SCG)(KE)
287	K	(Y)(FTW)(SVCAG)(HD)
289	N	(Y)(FTWH)(SVCAG)(ER)
159	T	(KR)(FQMW)(NELPI)(D)
162	Q	(Y)(T)(FW)(H)
294	E	(H)(FW)(YR)(CG)
160	H	(E)(TMD)(VQA)(KCLPIG)
286	Q	(Y)(T)(FW)(SVCAGH)
164	A	(KR)(E)(YQH)(D)
388	H	(E)(TMD)(VQA)(SCLPIG)
371	T	(R)(KH)(FW)(EQ)
284	M	(Y)(H)(TR)(CG)
156	P	(R)(Y)(H)(K)
324	D	(R)(H)(FW)(Y)
258	E	(H)(FW)(YR)(CG)
288	K	(Y)(T)(FW)(S)
290	P	(YR)(H)(T)(K)
392	G	(E)(FKWR)(D)(H)
<i>continued in next column</i>		

Table 3. continued		
res	type	disruptive mutations
283	L	(Y)(R)(H)(T)
291	D	(R)(K)(H)(FW)
158	Y	(K)(E)(Q)(M)
370	A	(R)(Y)(K)(E)
267	E	(H)(Y)(FW)(R)
315	K	(Y)(FW)(T)(S)
395	V	(R)(Y)(K)(EH)

**Table 3.** List of disruptive mutations for the top 25% of residues in IaosA, that are at the interface with IaosB.



**Fig. 5.** Residues in IaosA, at the interface with IaosB, colored by their relative importance. IaosB is shown in backbone representation (See Appendix for the coloring scheme for the protein chain IaosA.)

Figure 5 shows residues in IaosA colored by their importance, at the interface with IaosB.

**Interface with IaosB1.** Table 4 lists the top 25% of residues at the interface with IaosB1. The following table (Table 5) suggests possible disruptive replacements for these residues (see Section 3.6).

Table 4.					
res	type	subst's (%)	cvg	noc/ bb	dist (Å)
159	T	T(99)S	0.02	41/32	3.25
160	H	H(99)QY	0.03	29/6	3.75
206	G	G(95)	0.04	26/26	2.98
		T(2)C			
		S(1)			
<i>continued in next column</i>					

Table 4. continued					
res	type	subst's (%)	cvg	noc/ bb	dist (Å)
203	A	A(98)PG SV	0.05	1/0	4.59
384	F	F(98)Q	0.05	26/6	3.43
385	R	Y(1)M.I R(98).A KSH	0.05	46/0	3.01
165	Q	M(3) Q(94)L V(1)IET	0.06	17/0	3.82
297	R	R(98) K(1).	0.07	7/4	3.15
101	G	G(98)NE .PKT	0.08	4/4	3.68
213	R	R(89) P(8)MAV TK	0.08	30/3	2.88
259	D	D(35) E(64)	0.08	26/5	2.78
205	A	Y(3) A(91) S(1)FT G(1)VNP	0.09	39/25	3.48
157	G	G(95) S(1)ALV TIDM	0.11	5/5	4.42
321	Y	Y(97)HD .NTIQF	0.11	15/12	3.82
237	D	G(3) D(94)AT SQKYIL.	0.12	40/3	3.03
254	S	S(95)EA NGR(1)L TD	0.12	17/8	2.68
258	E	M(1) E(92) Q(1) W(1)DFS TANGKH	0.12	30/1	3.21
228	N	N(96) S(1)EPA H.	0.13	71/21	2.91
255	R	K(5) R(92)GT QND	0.14	69/9	3.10
441	G	.(5) G(92)LA DQKVPR	0.14	29/29	3.06
109	T	T(86) A(7) L(1) S(2)IMV Y.F	0.15	14/1	3.81

continued in next column

Table 4. continued					
res	type	subst's (%)	cvg	noc/ bb	dist (Å)
207	N	S(13) T(72) N(8) V(3) H(1)A	0.16	23/23	3.88
158	Y	Y(58) F(33) M(1) R(3)L K(2)CH	0.17	30/26	2.79
186	R	MR(94)A FL(1)SI VTYGDK	0.17	41/2	2.81
323	K	R(23) K(71)GV L(1)S.C IFDTAN	0.17	16/8	3.81
378	V	V(84) A(13)IT SCF	0.17	9/1	3.50
318	P	P(95)NG TAH.SCF LE	0.18	40/28	2.87
375	Y	N(3) D(76) Y(2) E(13)FL V(1)SIG	0.18	23/2	3.84
171	H	M(1) H(87) Q(2) F(2) L(3) Y(2)REA	0.19	52/10	2.83
182	R	D(4) R(87) E(2) S(2)KYH INGTQ	0.19	35/0	2.54
301	G	N(2) G(88) A(5)RT S(2)HF.	0.19	1/1	4.83
105	G	K(43) G(50)E R(3)QL. A(1)DS	0.20	18/18	3.00
263	Y	Y(16) W(68) F(14)ML	0.20	1/0	4.68
298	S	G(78) A(17)	0.20	4/4	4.31

continued in next column

Table 4. continued					
res	type	subst's (%)	cvg	noc/ bb	dist (Å)
315	K	S(2)KT. N(2) K(93)RS THL(1). GQAV	0.20	31/14	2.72
229	S	A(3) S(87) T(2) P(1) V(2)NG F(1)C.	0.21	28/10	3.03
231	D	A(2) D(88) Y(1)WH N(2) S(1)VLR TKCEG.	0.22	28/2	2.51
252	H	T(4) H(79)G D(6) N(4)AP K(1)SVL EF	0.22	15/0	2.95
442	G	.(5) G(81) S(7) A(4)PEM K	0.22	12/12	3.66
104	A	G(67) A(31).S V	0.23	1/1	4.51
204	I	G(4) L(82) I(3) C(1) F(4) M(2) V(1)ATS	0.23	25/2	3.66
241	E	KE(88) D(4)T R(1)SAV LYIHGQN	0.23	19/0	2.81
175	S	A(81) S(13) G(2)YNT CM	0.24	28/14	3.25
193	R	I(2) R(85) L(2) H(4)MTG AFENSWV Q	0.24	33/0	3.45

continued in next column

Table 4. continued					
res	type	subst's (%)	cvg	noc/ bb	dist (Å)
322	N	H(3) N(76) S(11) G(1) D(1) A(1)FI Q(1)T.C M	0.24	18/5	3.30
443	T	.(5) T(68) P(12) S(1) V(7) C(1)GKA FDML	0.24	13/5	3.40
172	W	W(25) H(57) Y(11) Q(2)A F(1)LSV	0.25	7/4	4.26
209	L	F(40) Y(32) L(17) H(2) V(2) W(1) I(2)A	0.25	17/2	3.44

**Table 4.** The top 25% of residues in IaosA at the interface with IaosB1. (Field names: res: residue number in the PDB entry; type: amino acid type; substs: substitutions seen in the alignment; with the percentage of each type in the bracket; noc/bb: number of contacts with the ligand, with the number of contacts realized through backbone atoms given in the bracket; dist: distance of closest approach to the ligand.)

Table 5.		
res	type	disruptive mutations
159	T	(KR)(FQMWH)(NELPI)(D)
160	H	(E)(TMD)(VQA)(KCLPIG)
206	G	(KR)(E)(FQMWH)(D)
203	A	(R)(K)(YE)(H)
384	F	(KE)(T)(D)(CG)
385	R	(D)(T)(YE)(LPI)
165	Q	(Y)(H)(FW)(T)
297	R	(T)(D)(Y)(VCAG)
101	G	(R)(FWH)(KE)(Y)
213	R	(Y)(D)(T)(E)
259	D	(R)(FWH)(YVCAG)(K)
205	A	(KR)(E)(Y)(Q)
157	G	(R)(K)(H)(E)
321	Y	(K)(M)(Q)(R)

continued in next column

res	type	disruptive mutations
237	D	(R)(H)(FW)(Y)
254	S	(R)(K)(H)(FW)
258	E	(H)(FW)(YR)(CG)
228	N	(Y)(H)(FW)(T)
255	R	(Y)(T)(D)(FW)
441	G	(R)(E)(H)(Y)
109	T	(R)(K)(Q)(H)
207	N	(Y)(R)(EH)(FW)
158	Y	(K)(E)(Q)(M)
186	R	(D)(TY)(E)(CG)
323	K	(Y)(FW)(T)(H)
378	V	(KR)(E)(Y)(Q)
318	P	(R)(Y)(H)(K)
375	Y	(K)(R)(Q)(M)
171	H	(E)(T)(D)(Q)
182	R	(T)(D)(Y)(VA)
301	G	(E)(K)(R)(D)
105	G	(R)(FWH)(KE)(Y)
263	Y	(K)(Q)(ER)(NM)
298	S	(R)(K)(FWH)(QM)
315	K	(Y)(FW)(T)(S)
229	S	(R)(K)(H)(Q)
231	D	(R)(H)(FW)(K)
252	H	(E)(Q)(T)(K)
442	G	(R)(H)(K)(FEW)
104	A	(KR)(E)(Y)(Q)
204	I	(R)(Y)(H)(K)
241	E	(H)(FW)(Y)(R)
175	S	(R)(K)(H)(FQW)
193	R	(T)(D)(Y)(E)
322	N	(Y)(H)(R)(FW)
443	T	(R)(K)(H)(FQW)
172	W	(KE)(QD)(T)(R)
209	L	(R)(Y)(KE)(T)

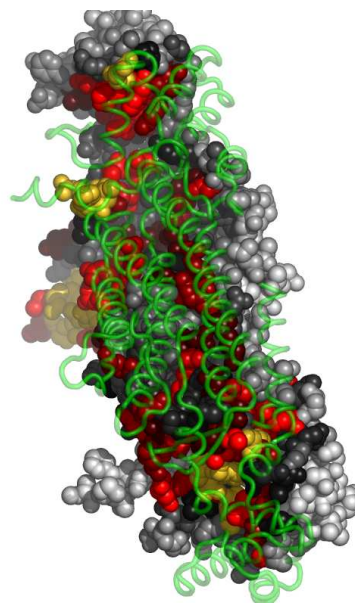
**Table 5.** List of disruptive mutations for the top 25% of residues in 1aosA, that are at the interface with 1aosB1.

Figure 6 shows residues in 1aosA colored by their importance, at the interface with 1aosB1.

**Interface with 1aosA1.** Table 6 lists the top 25% of residues at the interface with 1aosA1. The following table (Table 7) suggests possible disruptive replacements for these residues (see Section 3.6).

res	type	subst's (%)	cvg	noc/ bb	dist (Å)
294	E	E(99)A.	0.02	46/10	3.23
279	T	T(79) G(2) S(17)QC RVI	0.07	1/0	4.65
297	R	R(98)	0.07	34/3	2.88

*continued in next column*



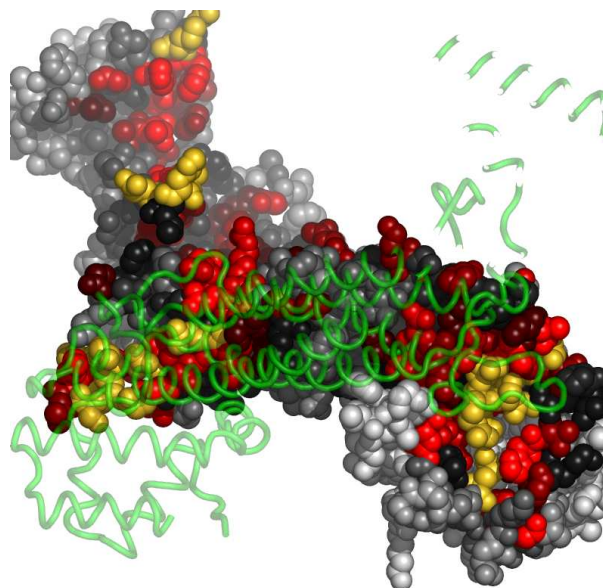
**Fig. 6.** Residues in 1aosA, at the interface with 1aosB1, colored by their relative importance. 1aosB1 is shown in backbone representation (See Appendix for the coloring scheme for the protein chain 1aosA.)

res	type	subst's (%)	cvg	noc/ bb	dist (Å)
324	D	K(1). D(98).G EQANS	0.10	56/13	2.88
258	E	M(1) E(92) Q(1)	0.12	1/0	4.73
295	L	W(1)DFS TANGKH L(93) I(2)FHV YGTKR.	0.14	20/0	3.74
291	D	D(95)I V(1)ALF CSY.	0.15	23/1	2.95
305	G	A(4) G(93) S(1).QT R	0.16	19/19	3.52
323	K	R(23) K(71)GV L(1)S.C IFDTAN	0.17	34/11	2.96
318	P	P(95)NG TAH.SCF LE	0.18	5/0	4.18
301	G	N(2) G(88)	0.19	30/30	3.13

*continued in next column*

Table 6. continued					
res	type	subst's (%)	cvg	noc/ bb	dist (Å)
298	S	A(5)RT S(2)HF. G(78) A(17)	0.20	35/20	3.19
299	K	S(2)KT. K(90)H R(2)ML T(1)EIW VASGQYN	0.21	12/2	4.01
327	E	L(2) E(89) D(2) R(1)IY S(1)QC. FNTV	0.23	36/0	3.19
322	N	H(3) N(76) S(11) G(1) D(1) A(1)FI Q(1)T.C M	0.24	12/5	3.75

**Table 6.** The top 25% of residues in laosA at the interface with laosA1. (Field names: res: residue number in the PDB entry; type: amino acid type; substs: substitutions seen in the alignment; with the percentage of each type in the bracket; noc/bb: number of contacts with the ligand, with the number of contacts realized through backbone atoms given in the bracket; dist: distance of closest approach to the ligand.)



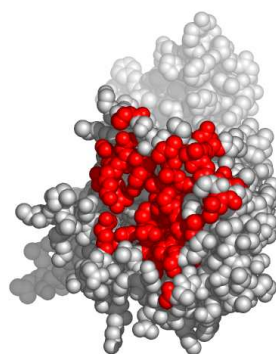
**Fig. 7.** Residues in laosA, at the interface with laosA1, colored by their relative importance. laosA1 is shown in backbone representation (See Appendix for the coloring scheme for the protein chain laosA.)

Figure 7 shows residues in laosA colored by their importance, at the interface with laosA1.

**2.4.3 Possible novel functional surfaces at 25% coverage.** One group of residues is conserved on the laosA surface, away from (or substantially larger than) other functional sites and interfaces recognizable in PDB entry laos. It is shown in Fig. 8. The residues

Table 7.		
res	type	disruptive mutations
294	E	(H)(FW)(YR)(CG)
279	T	(R)(K)(H)(FW)
297	R	(T)(D)(Y)(VCAG)
324	D	(R)(H)(FW)(Y)
258	E	(H)(FW)(YR)(CG)
295	L	(R)(Y)(TE)(H)
291	D	(R)(K)(H)(FW)
305	G	(E)(KR)(FWH)(D)
323	K	(Y)(FW)(T)(H)
318	P	(R)(Y)(H)(K)
301	G	(E)(K)(R)(D)
298	S	(R)(K)(FWH)(QM)
299	K	(Y)(T)(FW)(CG)
327	E	(H)(FW)(R)(Y)
322	N	(Y)(H)(R)(FW)

**Table 7.** List of disruptive mutations for the top 25% of residues in laosA, that are at the interface with laosA1.



**Fig. 8.** A possible active surface on the chain laosA.



belonging to this surface "patch" are listed in Table 8, while Table 9 suggests possible disruptive replacements for these residues (see Section 3.6).

Table 8.			
res	type	substitutions(%)	cvg
114	N	N(99)I.R	0.02
93	E	E(99)G.I	0.03
112	S	S(99)G.A	0.03
113	R	R(99)E.	0.03
111	R	R(98)KD.	0.04
115	D	D(96)E(3).	0.04
206	G	G(95)T(2)CS(1)	0.04
116	Q	Q(93)I(1)E(3)MH .AL	0.05
203	A	A(98)PGSV	0.05
199	L	L(92)I(1)Y(5)MA	0.06
236	R	R(98)AIGFW.	0.07
101	G	G(98)NE.PKT	0.08
213	R	R(89)P(8)MAVTK	0.08
86	E	E(97)D(1)VR.G	0.09
205	A	Y(3)A(91)S(1)FT G(1)VNP	0.09
89	H	H(95)Y(2)FDAQ.L R	0.10
108	H	H(90)R(6)GNCPAS QY.	0.10
220	L	L(97)M(1)I.	0.10
324	D	D(98).GEQANS	0.10
87	D	D(98)G.SE	0.11
222	F	F(95)M(2)L(1).Y	0.11
321	Y	Y(97)HD.NTIQF	0.11
237	D	G(3)D(94)ATSQKY IL.	0.12
228	N	N(96)S(1)EPAH.	0.13
326	Q	Q(95)NER.ADGFMS V	0.14
109	T	T(86)A(7)L(1) S(2)IMVY.F	0.15
202	G	A(46)G(49)C(3)S V	0.16
207	N	S(13)T(72)N(8) V(3)H(1)A	0.16
323	K	R(23)K(71)GV L(1)S.CIFDTAN	0.17
120	D	D(83)MA(4)L(5)T C(2)IHFV.NSG	0.18
318	P	P(95)NGTAH.SCFL E	0.18
105	G	K(43)G(50)ER(3) QL.A(1)DS	0.20
117	V	V(88)LI(6)G(1)A NT.YQKC	0.21

*continued in next column*

Table 8. continued			
res	type	substitutions(%)	cvg
229	S	A(3)S(87)T(2) P(1)V(2)NGF(1)C .	0.21
107	L	I(4)L(86)AM(4) V(3).FT	0.22
231	D	A(2)D(88)Y(1)WH N(2)S(1)VLRTKCE G.	0.22
204	I	G(4)L(82)I(3) C(1)F(4)M(2) V(1)ATS	0.23
241	E	KE(88)D(4)TR(1) SAVLYIHGQN	0.23
327	E	L(2)E(89)D(2) R(1)IYS(1)QC.FN TV	0.23
193	R	I(2)R(85)L(2) H(4)MTGAFENSWVQ	0.24
322	N	H(3)N(76)S(11) G(1)D(1)A(1)FI Q(1)T.CM	0.24
122	R	H(9)R(67)K(21)T .QNLA	0.25
123	L	L(83)M(11)VY I(2)FRA.H	0.25
209	L	F(40)Y(32)L(17) H(2)V(2)W(1) I(2)A	0.25

Table 8. Residues forming surface "patch" in IaosaA.

Table 9.		
res	type	disruptive mutations
114	N	(Y)(T)(FWH)(SCG)
93	E	(H)(FW)(R)(Y)
112	S	(KR)(QH)(FMW)(E)
113	R	(T)(VCAG)(Y)(SLPDI)
111	R	(T)(YVCAG)(SD)(FLWPI)
115	D	(R)(FW)(H)(VCAG)
206	G	(KR)(E)(FQMW)(D)
116	Q	(Y)(T)(H)(FW)
203	A	(R)(K)(YE)(H)
199	L	(R)(Y)(H)(T)
236	R	(D)(T)(E)(Y)
101	G	(R)(FWH)(KE)(Y)
213	R	(Y)(D)(T)(E)
86	E	(FWH)(Y)(R)(VCAG)
205	A	(KR)(E)(Y)(Q)
89	H	(E)(T)(D)(Q)
108	H	(E)(D)(M)(Q)
220	L	(Y)(R)(TH)(SCG)

*continued in next column*

Table 9. continued		
res	type	disruptive mutations
324	D	(R)(H)(FW)(Y)
87	D	(R)(FWH)(K)(Y)
222	F	(K)(E)(T)(Q)
321	Y	(K)(M)(Q)(R)
237	D	(R)(H)(FW)(Y)
228	N	(Y)(H)(FW)(T)
326	Q	(Y)(H)(FW)(T)
109	T	(R)(K)(Q)(H)
202	G	(KR)(E)(QH)(D)
207	N	(Y)(R)(EH)(FW)
323	K	(Y)(FW)(T)(H)
120	D	(R)(H)(K)(FW)
318	P	(R)(Y)(H)(K)
105	G	(R)(FWH)(KE)(Y)
117	V	(R)(Y)(E)(K)
229	S	(R)(K)(H)(Q)
107	L	(R)(Y)(H)(TK)
231	D	(R)(H)(FW)(K)
204	I	(R)(Y)(H)(K)
241	E	(H)(FW)(Y)(R)
327	E	(H)(FW)(R)(Y)
193	R	(T)(D)(Y)(E)
322	N	(Y)(H)(R)(FW)
122	R	(T)(D)(Y)(E)
123	L	(YR)(T)(E)(K)
209	L	(R)(Y)(KE)(T)

Table 9. Disruptive mutations for the surface patch in laosA.

Another group of surface residues is shown in Fig.9. The residues

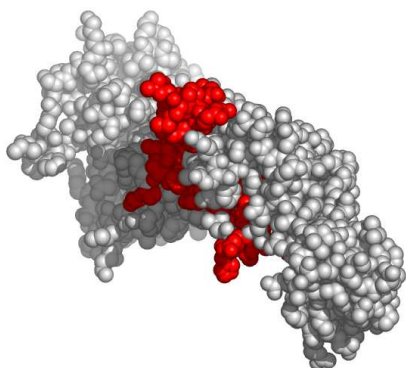


Fig. 9. Another possible active surface on the chain laosA.

belonging to this surface "patch" are listed in Table 10, while Table 11 suggests possible disruptive replacements for these residues (see Section 3.6).

Table 10.			
res	type	substitutions(%)	cvg
281	S	S(99).	0.01
285	P	P(99).	0.01
287	K	K(99).	0.01
289	N	N(99).	0.01
159	T	T(99)S	0.02
162	Q	Q(98)RMK	0.02
282	S	S(99)K.	0.02
294	E	E(99)A.	0.02
160	H	H(99)QY	0.03
280	G	G(92)T(6)IPCAS	0.04
286	Q	H(2)Q(95)N(2).	0.04
164	A	A(98)G(1)ST	0.06
165	Q	M(3)Q(94)LV(1)I ET	0.06
279	T	T(79)G(2)S(17)Q CRVI	0.07
297	R	R(98)K(1).	0.07
259	D	D(35)E(64)	0.08
284	M	M(98)LTF.	0.08
166	P	P(95)ATV(2)IF	0.09
157	G	G(95)S(1)ALVTID M	0.11
254	S	S(95)EANGR(1)LT D	0.12
258	E	M(1)E(92)Q(1) W(1)DFSTANGKH	0.12
275	D	A(1)D(95)QSL N(1)EGKPH	0.12
288	K	K(88)R(10)VIQH.	0.12
290	P	P(93)A(4)SML.	0.13
255	R	K(5)R(92)GTQND	0.14
295	L	L(93)I(2)FHVYGT KR.	0.14
441	G	.(5)G(92)LADQKV PR	0.14
283	L	I(70)M(3)L(25)V A.	0.15
291	D	D(95)IV(1)ALFCS Y.	0.15
305	G	A(4)G(93)S(1).Q TR	0.16
158	Y	Y(58)F(33)M(1) R(3)LK(2)CH	0.17
186	R	MR(94)AFL(1)SIV TYGDK	0.17
171	H	M(1)H(87)Q(2) F(2)L(3)Y(2)REA	0.19

continued in next column

Table 10. continued			
res	type	substitutions(%)	cvg
182	R	D(4)R(87)E(2) S(2)KYHINGTQ	0.19
301	G	N(2)G(88)A(5)RT S(2)HF.	0.19
263	Y	Y(16)W(68)F(14) ML	0.20
298	S	G(78)A(17)S(2)K T.	0.20
299	K	K(90)HR(2)ML T(1)EIVWASGQYN.	0.21
252	H	T(4)H(79)GD(6) N(4)APK(1)SVLEF	0.22
442	G	.(5)G(81)S(7) A(4)PEMK	0.22
175	S	A(81)S(13)G(2)Y NTCM	0.24
443	T	.(5)T(68)P(12) S(1)V(7)C(1)GKA FDML	0.24
172	W	W(25)H(57)Y(11) Q(2)AF(1)LSV	0.25

Table 10. Residues forming surface "patch" in laosA.

Table 11.		
res	type	disruptive mutations
281	S	(KR)(FQMWH)(NLPI)(YE)
285	P	(YR)(TH)(SCG)(KE)
287	K	(Y)(FTW)(SVCAG)(HD)
289	N	(Y)(FTWH)(SVCAG)(ER)
159	T	(KR)(FQMWH)(NELPI)(D)
162	Q	(Y)(T)(FW)(H)
282	S	(FW)(HR)(KYM)(QLPI)
294	E	(H)(FW)(YR)(CG)
160	H	(E)(TMD)(VQA)(KCLPIG)
280	G	(R)(K)(E)(H)
286	Q	(Y)(T)(FW)(SVCAHG)
164	A	(KR)(E)(YQH)(D)
165	Q	(Y)(H)(FW)(T)
279	T	(R)(K)(H)(FW)
297	R	(T)(D)(Y)(VCAG)
259	D	(R)(FWH)(YVCAG)(K)
284	M	(Y)(H)(TR)(CG)
166	P	(R)(Y)(K)(H)
157	G	(R)(K)(H)(E)
254	S	(R)(K)(H)(FW)
258	E	(H)(FW)(YR)(CG)
275	D	(R)(H)(FW)(Y)
288	K	(Y)(T)(FW)(S)
290	P	(YR)(H)(T)(K)

continued in next column

Table 11. continued		
res	type	disruptive mutations
255	R	(Y)(T)(D)(FW)
295	L	(R)(Y)(TE)(H)
441	G	(R)(E)(H)(Y)
283	L	(Y)(R)(H)(T)
291	D	(R)(K)(H)(FW)
305	G	(E)(KR)(FWH)(D)
158	Y	(K)(E)(Q)(M)
186	R	(D)(TY)(E)(CG)
171	H	(E)(T)(D)(Q)
182	R	(T)(D)(Y)(VA)
301	G	(E)(K)(R)(D)
263	Y	(K)(Q)(ER)(NM)
298	S	(R)(K)(FWH)(QM)
299	K	(Y)(T)(FW)(CG)
252	H	(E)(Q)(T)(K)
442	G	(R)(H)(K)(FEW)
175	S	(R)(K)(H)(FQW)
443	T	(R)(K)(H)(FQW)
172	W	(KE)(QD)(T)(R)

Table 11. Disruptive mutations for the surface patch in laosA.

Another group of surface residues is shown in Fig.10. The residues

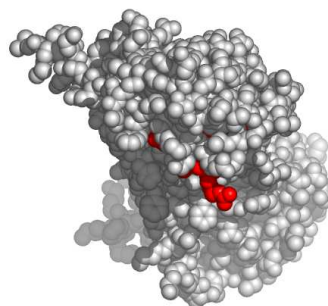


Fig. 10. Another possible active surface on the chain laosA.

belonging to this surface "patch" are listed in Table 12, while Table 13 suggests possible disruptive replacements for these residues (see Section 3.6).

Table 12.			
res	type	substitutions(%)	cvg
384	F	F(98)QY(1)M.I	0.05
385	R	R(98).AKSH	0.05
388	H	Y(11)H(88).Q	0.06
371	T	V(2)T(95)ALQSMN	0.07
374	A	LA(96)MVI(1)T	0.07
392	G	A(11)G(87)S.KR	0.13
372	D	D(68)E(27)HTGFA NQV	0.15
370	A	T(1)A(92)S(4)VI LM	0.17
378	V	V(84)A(13)ITSCF	0.17
375	Y	N(3)D(76)Y(2) E(13)FLV(1)SIG	0.18
395	V	LV(92)I(2)GA(2) S.TMCE	0.23

Table 12. Residues forming surface "patch" in laosA.

Table 13.		
res	type	disruptive mutations
384	F	(KE)(T)(D)(CG)
385	R	(D)(T)(YE)(LPI)
388	H	(E)(TMD)(VQA)(SCLPIG)
371	T	(R)(KH)(FW)(EQ)
374	A	(R)(Y)(K)(E)
392	G	(E)(FKWR)(D)(H)
372	D	(R)(H)(FW)(K)
370	A	(R)(Y)(K)(E)
378	V	(KR)(E)(Y)(Q)
375	Y	(K)(R)(Q)(M)
395	V	(R)(Y)(K)(EH)

Table 13. Disruptive mutations for the surface patch in laosA.

### 3 NOTES ON USING TRACE RESULTS

#### 3.1 Coverage

Trace results are commonly expressed in terms of coverage: the residue is important if its "coverage" is small - that is if it belongs to some small top percentage of residues [100% is all of the residues in a chain], according to trace. The ET results are presented in the form of a table, usually limited to top 25% percent of residues (or to some nearby percentage), sorted by the strength of the presumed evolutionary pressure. (I.e., the smaller the coverage, the stronger the pressure on the residue.) Starting from the top of that list, mutating a couple of residues should affect the protein somehow, with the exact effects to be determined experimentally.

#### 3.2 Known substitutions

One of the table columns is "substitutions" - other amino acid types seen at the same position in the alignment. These amino acid types may be interchangeable at that position in the protein, so if one wants to affect the protein by a point mutation, they should be avoided. For example if the substitutions are "RVK" and the original protein has

an R at that position, it is advisable to try anything, but RVK. Conversely, when looking for substitutions which will *not* affect the protein, one may try replacing, R with K, or (perhaps more surprisingly), with V. The percentage of times the substitution appears in the alignment is given in the immediately following bracket. No percentage is given in the cases when it is smaller than 1%. This is meant to be a rough guide - due to rounding errors these percentages often do not add up to 100%.

#### 3.3 Surface

To detect candidates for novel functional interfaces, first we look for residues that are solvent accessible (according to DSSP program) by at least  $10\text{\AA}^2$ , which is roughly the area needed for one water molecule to come in the contact with the residue. Furthermore, we require that these residues form a "cluster" of residues which have neighbor within  $5\text{\AA}$  from any of their heavy atoms.

Note, however, that, if our picture of protein evolution is correct, the neighboring residues which *are not* surface accessible might be equally important in maintaining the interaction specificity - they should not be automatically dropped from consideration when choosing the set for mutagenesis. (Especially if they form a cluster with the surface residues.)

#### 3.4 Number of contacts

Another column worth noting is denoted "noc/bb"; it tells the number of contacts heavy atoms of the residue in question make across the interface, as well as how many of them are realized through the backbone atoms (if all or most contacts are through the backbone, mutation presumably won't have strong impact). Two heavy atoms are considered to be "in contact" if their centers are closer than  $5\text{\AA}$ .

#### 3.5 Annotation

If the residue annotation is available (either from the pdb file or from other sources), another column, with the header "annotation" appears. Annotations carried over from PDB are the following: site (indicating existence of related site record in PDB), S-S (disulfide bond forming residue), hb (hydrogen bond forming residue, jb (james bond forming residue), and sb (for salt bridge forming residue).

#### 3.6 Mutation suggestions

Mutation suggestions are completely heuristic and based on complementarity with the substitutions found in the alignment. Note that they are meant to be **disruptive** to the interaction of the protein with its ligand. The attempt is made to complement the following properties: small [AVGSTC], medium [LPNQDEMIK], large [WFYHR], hydrophobic [LPVAMWFI], polar [GTCY]; positively [KHR], or negatively [DE] charged, aromatic [WFYH], long aliphatic chain [EK RQM], OH-group possession [SDETY], and NH<sub>2</sub> group possession [NQRK]. The suggestions are listed according to how different they appear to be from the original amino acid, and they are grouped in round brackets if they appear equally disruptive. From left to right, each bracketed group of amino acid types resembles more strongly the original (i.e. is, presumably, less disruptive) These suggestions are tentative - they might prove disruptive to the fold rather than to the interaction. Many researcher will choose, however, the straightforward alanine mutations, especially in the beginning stages of their investigation.

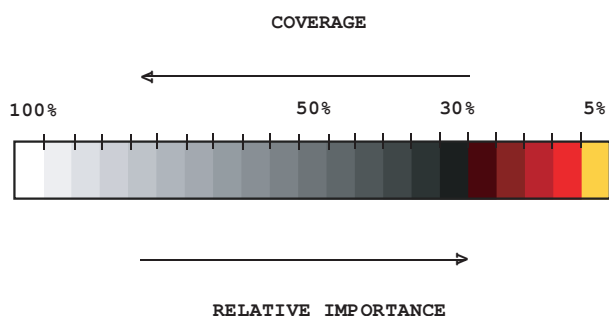


Fig. 11. Coloring scheme used to color residues by their relative importance.

## 4 APPENDIX

### 4.1 File formats

Files with extension “ranks\_sorted” are the actual trace results. The fields in the table in this file:

- alignment# number of the position in the alignment
- residue# residue number in the PDB file
- type amino acid type
- rank rank of the position according to older version of ET
- variability has two subfields:
  1. number of different amino acids appearing in in this column of the alignment
  2. their type
- rho ET score - the smaller this value, the lesser variability of this position across the branches of the tree (and, presumably, the greater the importance for the protein)
- cvg coverage - percentage of the residues on the structure which have this rho or smaller
- gaps percentage of gaps in this column

### 4.2 Color schemes used

The following color scheme is used in figures with residues colored by cluster size: black is a single-residue cluster; clusters composed of more than one residue colored according to this hierarchy (ordered by descending size): red, blue, yellow, green, purple, azure, turquoise, brown, coral, magenta, LightSalmon, SkyBlue, violet, gold, bisque, LightSlateBlue, orchid, RosyBrown, MediumAquamarine, DarkOliveGreen, CornflowerBlue, grey55, burlywood, LimeGreen, tan, DarkOrange, DeepPink, maroon, BlanchedAlmond.

The colors used to distinguish the residues by the estimated evolutionary pressure they experience can be seen in Fig. 11.

### 4.3 Credits

**4.3.1 Alistat** *alistat* reads a multiple sequence alignment from the file and shows a number of simple statistics about it. These statistics include the format, the number of sequences, the total number of residues, the average and range of the sequence lengths, and the

alignment length (e.g. including gap characters). Also shown are some percent identities. A percent pairwise alignment identity is defined as  $(\text{idents} / \text{MIN}(\text{len1}, \text{len2}))$  where *idents* is the number of exact identities and *len1*, *len2* are the unaligned lengths of the two sequences. The “average percent identity”, “most related pair”, and “most unrelated pair” of the alignment are the average, maximum, and minimum of all  $(N)(N-1)/2$  pairs, respectively. The “most distant seq” is calculated by finding the maximum pairwise identity (best relative) for all *N* sequences, then finding the minimum of these *N* numbers (hence, the most outlying sequence). *alistat* is copyrighted by HHMI/Washington University School of Medicine, 1992-2001, and freely distributed under the GNU General Public License.

**4.3.2 CE** To map ligand binding sites from different source structures, *report\_maker* uses the CE program: <http://cl.sdsc.edu/>. Shindyalov IN, Bourne PE (1998) “Protein structure alignment by incremental combinatorial extension (CE) of the optimal path”. *Protein Engineering* 11(9) 739-747.

**4.3.3 DSSP** In this work a residue is considered solvent accessible if the DSSP program finds it exposed to water by at least  $10\text{\AA}^2$ , which is roughly the area needed for one water molecule to come in the contact with the residue. DSSP is copyrighted by W. Kabsch, C. Sander and MPI-MF, 1983, 1985, 1988, 1994 1995, CMBI version by Elmar.Krieger@cmbi.kun.nl November 18,2002,

<http://www.cmbi.kun.nl/gv/dssp/descrip.html>.

**4.3.4 HSSP** Whenever available, *report\_maker* uses HSSP alignment as a starting point for the analysis (sequences shorter than 75% of the query are taken out, however); R. Schneider, A. de Daruvar, and C. Sander. “The HSSP database of protein structure-sequence alignments.” *Nucleic Acids Res.*, 25:226–230, 1997.

<http://swift.cmbi.kun.nl/swift/hssp/>

**4.3.5 LaTeX** The text for this report was processed using L<sup>A</sup>T<sub>E</sub>X; Leslie Lamport, “LaTeX: A Document Preparation System Addison-Wesley,” Reading, Mass. (1986).

**4.3.6 Muscle** When making alignments “from scratch”, *report\_maker* uses Muscle alignment program: Edgar, Robert C. (2004), “MUSCLE: multiple sequence alignment with high accuracy and high throughput.” *Nucleic Acids Research* 32(5), 1792-97.

<http://www.drive5.com/muscle/>

**4.3.7 Pymol** The figures in this report were produced using Pymol. The scripts can be found in the attachment. Pymol is an open-source application copyrighted by DeLano Scientific LLC (2005). For more information about Pymol see <http://pymol.sourceforge.net/>. (Note for Windows users: the attached package needs to be unzipped for Pymol to read the scripts and launch the viewer.)

## 4.4 Note about ET Viewer

Dan Morgan from the Lichtarge lab has developed a visualization tool specifically for viewing trace results. If you are interested, please visit:

<http://mammoth.bcm.tmc.edu/traceview/>

The viewer is self-unpacking and self-installing. Input files to be used with ETV (extension .etvx) can be found in the attachment to the main report.

#### 4.5 Citing this work

The method used to rank residues and make predictions in this report can be found in Mihalek, I., I. Reš, O. Lichtarge. (2004). "A Family of Evolution-Entropy Hybrid Methods for Ranking of Protein Residues by Importance" J. Mol. Bio. **336**: 1265-82. For the original version of ET see O. Lichtarge, H. Bourne and F. Cohen (1996). "An Evolutionary Trace Method Defines Binding Surfaces Common to Protein Families" J. Mol. Bio. **257**: 342-358.

**report\_maker** itself is described in Mihalek I., I. Res and O. Lichtarge (2006). "Evolutionary Trace Report Maker: a new type of service for comparative analysis of proteins." Bioinformatics **22**:1656-7.

#### 4.6 About report\_maker

**report\_maker** was written in 2006 by Ivana Mihalek. The 1D ranking visualization program was written by Ivica Reš. **report\_maker** is copyrighted by Lichtarge Lab, Baylor College of Medicine, Houston.

#### 4.7 Attachments

The following files should accompany this report:

- 1aosA.complex.pdb - coordinates of 1aosA with all of its interacting partners
- 1aosA.etvx - ET viewer input file for 1aosA
- 1aosA.cluster\_report.summary - Cluster report summary for 1aosA
- 1aosA.ranks - Ranks file in sequence order for 1aosA
- 1aosA.clusters - Cluster descriptions for 1aosA
- 1aosA.msf - the multiple sequence alignment used for the chain 1aosA
- 1aosA.descr - description of sequences used in 1aosA msf
- 1aosA.ranks\_sorted - full listing of residues and their ranking for 1aosA
- 1aosA.1aosB.if.pml - Pymol script for Figure 5
- 1aosA.cbvsg - used by other 1aosA – related pymol scripts
- 1aosA.1aosB1.if.pml - Pymol script for Figure 6
- 1aosA.1aosA1.if.pml - Pymol script for Figure 7