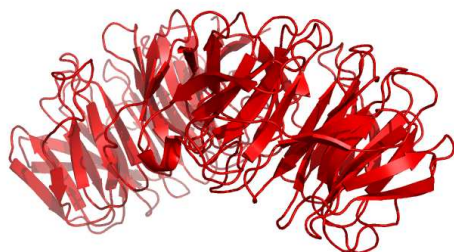


1nr0

Evolutionary trace report by **report_maker**

September 22, 2008



4.3.1	Alistat	7
4.3.2	CE	7
4.3.3	DSSP	7
4.3.4	HSSP	7
4.3.5	LaTex	7
4.3.6	Muscle	7
4.3.7	Pymol	8
4.4	Note about ET Viewer	8
4.5	Citing this work	8
4.6	About report_maker	8
4.7	Attachments	8

CONTENTS

1 Introduction

2 Chain 1nr0A

- 2.1 Q11176 overview
- 2.2 Multiple sequence alignment for 1nr0A
- 2.3 Residue ranking in 1nr0A
- 2.4 Top ranking residues in 1nr0A and their position on the structure
 - 2.4.1 Clustering of residues at 25% coverage.
 - 2.4.2 Overlap with known functional surfaces at 25% coverage.
 - 2.4.3 Possible novel functional surfaces at 25% coverage.

3 Notes on using trace results

- 3.1 Coverage
- 3.2 Known substitutions
- 3.3 Surface
- 3.4 Number of contacts
- 3.5 Annotation
- 3.6 Mutation suggestions

4 Appendix

- 4.1 File formats
- 4.2 Color schemes used
- 4.3 Credits

1 INTRODUCTION

From the original Protein Data Bank entry (PDB id 1nr0):

Title: Two seven-bladed beta-propeller domains revealed by the structure of a *c. elegans* homologue of yeast actin interacting protein 1 (aip1).

Compound: Mol id: 1; molecule: actin interacting protein 1; chain: a; synonym: aip1, uncoordinated protein 78; engineered: yes

Organism, scientific name: *Caenorhabditis Elegans*;
1nr0 contains a single unique chain 1nr0A (610 residues long).

2 CHAIN 1NR0A

1 2.1 Q11176 overview

1 From SwissProt, id Q11176, 98% identical to 1nr0A:

1 **Description:** Actin interacting protein 1 (AIP1) (Uncoordinated protein 78).

1 **Organism, scientific name:** *Caenorhabditis elegans*.

1 **Taxonomy:** Eukaryota; Metazoa; Nematoda; Chromadorea; Rhabditida; Rhabditoidea; Rhabditidae; Peloderinae; *Caenorhabditis*.

1 **Function:** Induces disassembly of actin filaments in conjunction with ADF/cofilin family proteins. Regulator of actin organization in myofibrils.

3 **Similarity:** Belongs to the WD-repeat AIP1 family.

3 **Similarity:** Contains 9 WD repeats.

6 **About:** This Swiss-Prot entry is copyright. It is produced through a collaboration between the Swiss Institute of Bioinformatics and the EMBL outstation - the European Bioinformatics Institute. There are no restrictions on its use as long as its content is in no way modified and this statement is not removed.

6 2.2 Multiple sequence alignment for 1nr0A

7 For the chain 1nr0A, the alignment 1nr0A.msf (attached) with 15 sequences was used. The alignment was assembled through combination of BLAST searching on the UniProt database and alignment using Muscle program. It can be found in the attachment to this report, under the name of 1nr0A.msf. Its statistics, from the *alistat* program are the following:

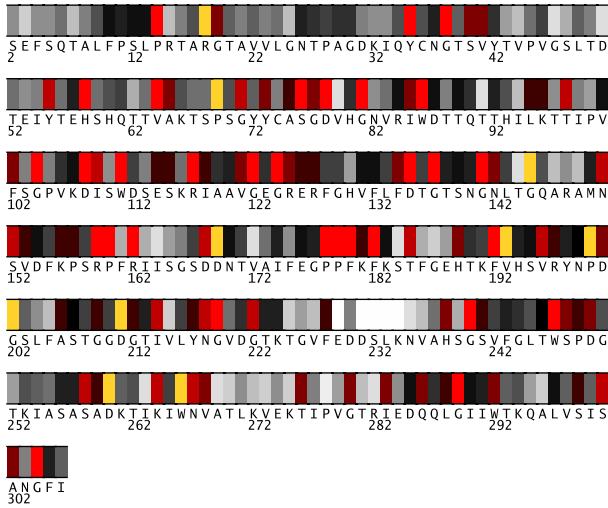


Fig. 1. Residues 2-306 in Inr0A colored by their relative importance. (See Appendix, Fig.10, for the coloring scheme.)

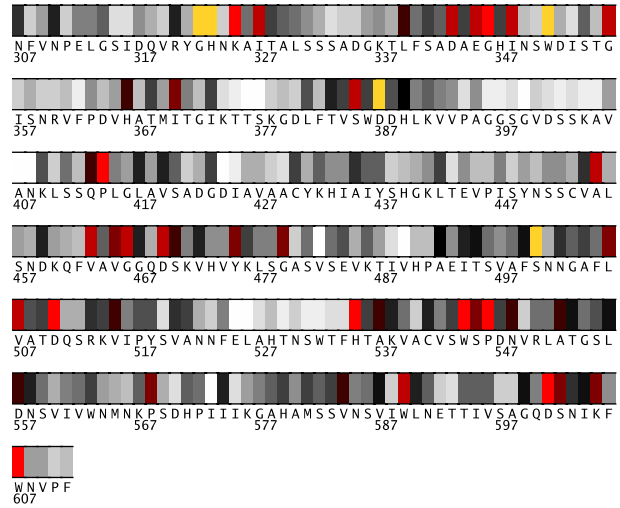


Fig. 2. Residues 307-611 in Inr0A colored by their relative importance. (See Appendix, Fig.10, for the coloring scheme.)

```

Format:                MSF
Number of sequences:  15
Total number of residues:  8922
Smallest:              577
Largest:               610
Average length:        594.8
Alignment length:      610
Average identity:      42%
Most related pair:     98%
Most unrelated pair:   16%
Most distant seq:     55%

```

Furthermore, 2% of residues show as conserved in this alignment.

The alignment consists of 93% eukaryotic (46% vertebrata, 26% fungi, 13% plantae) sequences. (Descriptions of some sequences were not readily available.) The file containing the sequence descriptions can be found in the attachment, under the name Inr0A.descr.

2.3 Residue ranking in Inr0A

The Inr0A sequence is shown in Figs. 1–2, with each residue colored according to its estimated importance. The full listing of residues in Inr0A can be found in the file called Inr0A.ranks.sorted in the attachment.

2.4 Top ranking residues in Inr0A and their position on the structure

In the following we consider residues ranking among top 25% of residues in the protein. Figure 3 shows residues in Inr0A colored by their importance: bright red and yellow indicate more conserved/important residues (see Appendix for the coloring scheme). A Pymol script for producing this figure can be found in the attachment.

2.4.1 Clustering of residues at 25% coverage. Fig. 4 shows the top 25% of all residues, this time colored according to clusters they belong to. The clusters in Fig.4 are composed of the residues listed in Table 1.

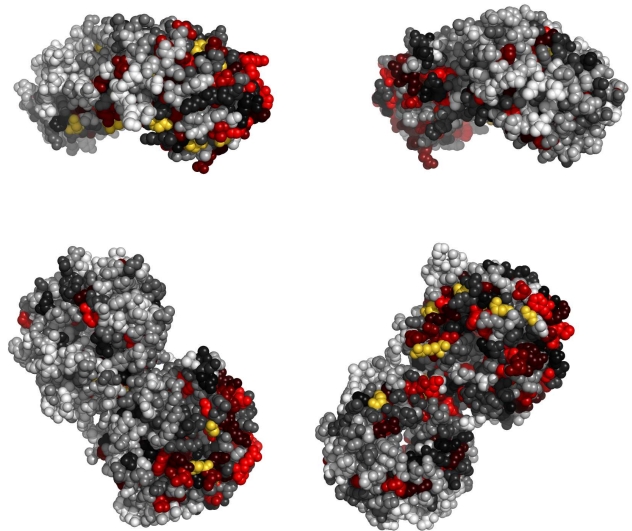


Fig. 3. Residues in Inr0A, colored by their relative importance. Clockwise: front, back, top and bottom views.

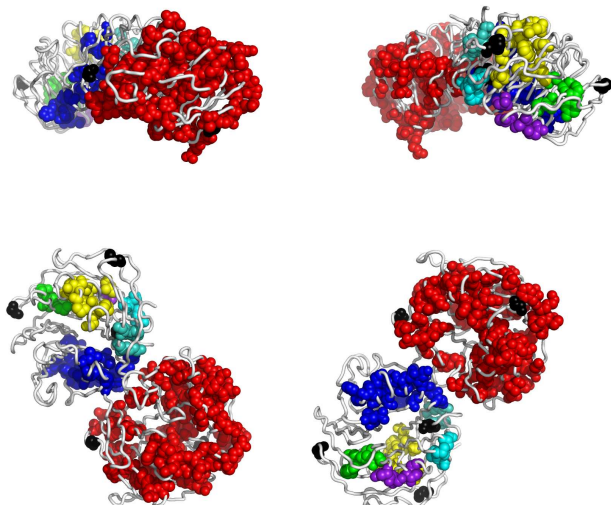


Fig. 4. Residues in Inr0A, colored according to the cluster they belong to: red, followed by blue and yellow are the largest clusters (see Appendix for the coloring scheme). Clockwise: front, back, top and bottom views. The corresponding Pymol script is attached.

Table 1.		
cluster color	size	member residues
red	104	14, 18, 19, 35, 38, 40, 41, 55, 58 64, 65, 69, 71, 73, 75, 76, 77, 78 81, 85, 86, 95, 96, 98, 102, 104 108, 109, 111, 114, 115, 117, 118 121, 122, 124, 125, 126, 127, 134 135, 137, 141, 142, 151, 152, 153 156, 157, 159, 160, 162, 168, 169 178, 179, 180, 181, 182, 185, 189 192, 193, 196, 197, 199, 200, 201 202, 206, 207, 209, 211, 212, 214 217, 218, 219, 222, 228, 238, 240 241, 247, 248, 249, 250, 258, 259 260, 264, 266, 267, 268, 276, 283 286, 288, 289, 292, 299, 301, 302 304
blue	20	322, 323, 325, 327, 339, 343, 345 346, 348, 351, 356, 366, 370, 385 387, 389, 413, 414, 601, 602
yellow	10	500, 506, 507, 515, 544, 545, 546 548, 552, 589
green	5	455, 463, 465, 466, 475
purple	4	469, 470, 492, 510
azure	3	535, 537, 557

continued in next column

Table 1. continued		
cluster color	size	member residues
turquoise	2	605, 607

Table 1. Clusters of top ranking residues in Inr0A.

2.4.2 Overlap with known functional surfaces at 25% coverage. The name of the ligand is composed of the source PDB identifier and the heteroatom name used in that file.

Manganese (ii) ion binding site. Table 2 lists the top 25% of residues at the interface with Inr0AMN700 (manganese (ii) ion). The following table (Table 3) suggests possible disruptive replacements for these residues (see Section 3.6).

Table 2.					
res	type	subst's (%)	cvg	noc/ bb	dist (Å)
111	W	W (86) F (13)	0.09	1/1	4.83

Table 2. The top 25% of residues in Inr0A at the interface with manganese (ii) ion. (Field names: res: residue number in the PDB entry; type: amino acid type; substs: substitutions seen in the alignment; with the percentage of each type in the bracket; noc/bb: number of contacts with the ligand, with the number of contacts realized through backbone atoms given in the bracket; dist: distance of closest approach to the ligand.)

Table 3.		
res	type	disruptive mutations
111	W	(KE) (TQD) (SNCRG) (M)

Table 3. List of disruptive mutations for the top 25% of residues in Inr0A, that are at the interface with manganese (ii) ion.

Figure 5 shows residues in Inr0A colored by their importance, at the interface with Inr0AMN700.

2.4.3 Possible novel functional surfaces at 25% coverage. One group of residues is conserved on the Inr0A surface, away from (or substantially larger than) other functional sites and interfaces recognizable in PDB entry Inr0. It is shown in Fig. 6. The right panel shows (in blue) the rest of the larger cluster this surface belongs to. The residues belonging to this surface "patch" are listed in Table 4, while Table 5 suggests possible disruptive replacements for these residues (see Section 3.6).

Table 4.			
res	type	substitutions(%)	cvg
104	G	G(86)A(13)	0.09
124	G	G(86)K(13)	0.09
102	F	F(59)L(40)	0.16
125	R	R(73)K(13)E(13)	0.16
126	E	E(73)D(13)G(13)	0.21
127	R	K(59)R(26)P(13)	0.24

continued in next column

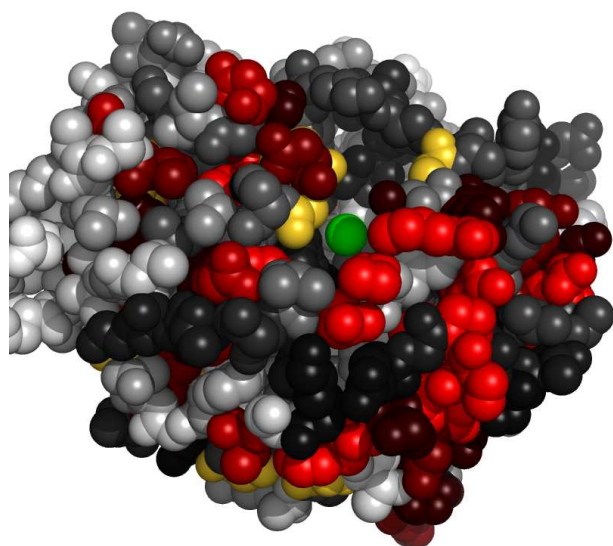


Fig. 5. Residues in 1nr0A, at the interface with manganese (ii) ion, colored by their relative importance. The ligand (manganese (ii) ion) is colored green. Atoms further than 30Å away from the geometric center of the ligand, as well as on the line of sight to the ligand were removed. (See Appendix for the coloring scheme for the protein chain 1nr0A.)

Table 5. continued		
res	type	disruptive mutations
126	E	(FWH) (R) (Y) (VA)
127	R	(T) (Y) (D) (S)

Table 5. Disruptive mutations for the surface patch in 1nr0A.

Another group of surface residues is shown in Fig.7. The right panel shows (in blue) the rest of the larger cluster this surface belongs to.

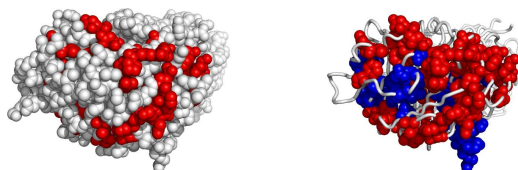


Fig. 7. Another possible active surface on the chain 1nr0A. The larger cluster it belongs to is shown in blue.

The residues belonging to this surface "patch" are listed in Table 6, while Table 7 suggests possible disruptive replacements for these residues (see Section 3.6).

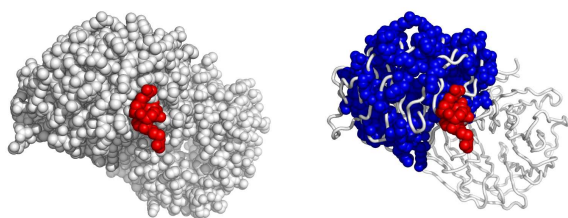


Fig. 6. A possible active surface on the chain 1nr0A. The larger cluster it belongs to is shown in blue.

Table 4. continued			
res	type	substitutions(%)	cvg

Table 4. Residues forming surface "patch" in 1nr0A.

Table 5.		
res	type	disruptive mutations
104	G	(KER) (QHD) (FYMW) (N)
124	G	(FEW) (YHDR) (KM) (QLPI)
102	F	(KE) (T) (QDR) (SCG)
125	R	(T) (Y) (VCAG) (FW)

continued in next column

Table 6.			
res	type	substitutions(%)	cvg
69	P	P(100)	0.03
145	G	G(100)	0.03
169	D	D(100)	0.03
200	P	P(100)	0.03
211	D	D(100)	0.03
35	Y	Y(86)A(13)	0.09
38	G	G(86)E(13)	0.09
58	H	H(86)W(13)	0.09
86	W	W(86)V(13)	0.09
111	W	W(86)F(13)	0.09
117	R	R(86)M(13)	0.09
135	D	D(86)S(13)	0.09
137	G	G(86)N(13)	0.09
141	G	G(86)Q(13)	0.09
159	R	R(86)G(13)	0.09
160	P	P(86)Q(13)	0.09
162	R	R(86).(13)	0.09
178	P	P(86)A(13)	0.09
179	P	P(86)S(13)	0.09
180	F	F(86)G(13)	0.09
182	F	F(86)G(13)	0.09
192	F	F(86)S(13)	0.09

continued in next column

res	type	substitutions(%)	cvg
247	W	W(86)F(13)	0.09
55	Y	Y(86)F(13)	0.10
71	G	G(86)S(13)	0.10
152	S	S(86)A(13)	0.10
168	D	D(86)E(13)	0.11
185	T	T(86)S(13)	0.11
98	T	E(86)T(13)	0.12
267	N	D(86)N(13)	0.12
151	N	N(73)L(26)	0.14
250	D	D(93)C(6)	0.15
292	W	W(73)V(13)F(13)	0.15
73	Y	Y(73)W(13)N(13)	0.16
268	V	V(73)I(13)T(13)	0.16
40	S	S(80)C(6)F(13)	0.17
134	F	W(73)F(13)I(13)	0.18
142	N	E(73)N(13)T(13)	0.18
189	H	H(86)N(6)Q(6)	0.19
201	D	D(86)A(6)G(6)	0.19
248	S	S(86)V(6)L(6)	0.19
95	L	L(80)M(13)V(6)	0.21
96	K	K(80)R(6)I(13)	0.21
156	K	K(80)R(6)S(13)	0.21
157	P	Q(59)P(40)	0.21
181	K	K(80)Q(6)T(13)	0.21
197	R	R(80)A(13)K(6)	0.21
115	S	S(59)G(26)D(13)	0.22
228	F	L(73)F(13)I(13)	0.23
114	E	D(59)E(26)T(13)	0.24
249	P	P(80)A(6)D(13)	0.24
199	N	S(73)N(13)A(13)	0.25
246	T	S(59)T(13)A(26)	0.25

Table 6. Residues forming surface "patch" in 1nr0A.

res	type	disruptive mutations
69	P	(YR)(TH)(SKECG)(FQWD)
145	G	(KER)(FQMWH)(NYLPI)(SVA)
169	D	(R)(FWH)(KYVCAG)(TQM)
200	P	(YR)(TH)(SKECG)(FQWD)
211	D	(R)(FWH)(KYVCAG)(TQM)
35	Y	(K)(Q)(EMR)(N)
38	G	(R)(FKWH)(YEQM)(NLPDI)
58	H	(E)(TQD)(KM)(SNCG)
86	W	(KE)(QD)(TR)(N)
111	W	(KE)(TQD)(SNCRG)(M)
117	R	(T)(YD)(SCG)(EVA)
135	D	(R)(FWH)(K)(Y)
137	G	(ER)(FKWH)(YMD)(Q)
141	G	(FEWHR)(KYD)(M)(QLPI)
159	R	(D)(E)(TYLPI)(SFVMAW)

continued in next column

res	type	disruptive mutations
160	P	(Y)(THR)(SCG)(FEW)
162	R	(TD)(SVCLAPIG)(YE)(FMW)
178	P	(YR)(H)(TKE)(SQCDG)
179	P	(R)(Y)(H)(K)
180	F	(KE)(QD)(R)(TN)
182	F	(KE)(QD)(R)(TN)
192	F	(K)(E)(Q)(DR)
247	W	(KE)(TQD)(SNCRG)(M)
55	Y	(K)(Q)(EM)(NR)
71	G	(KR)(E)(FQMWH)(D)
152	S	(KR)(QH)(FYEMW)(N)
168	D	(R)(FWH)(YVCAG)(K)
185	T	(KR)(FQMWH)(NELPI)(D)
98	T	(R)(FKWH)(QM)(NLPDI)
267	N	(Y)(FWH)(TR)(VCAG)
151	N	(Y)(TH)(FWR)(SECG)
250	D	(R)(FWH)(K)(Y)
292	W	(KE)(Q)(D)(T)
73	Y	(K)(QM)(E)(R)
268	V	(R)(K)(Y)(E)
40	S	(K)(R)(Q)(EM)
134	F	(KE)(T)(QD)(R)
142	N	(Y)(FWH)(R)(TVA)
189	H	(T)(E)(D)(SVCAG)
201	D	(R)(H)(K)(FW)
248	S	(R)(K)(H)(Y)
95	L	(Y)(R)(H)(T)
96	K	(Y)(T)(FW)(S)
156	K	(Y)(FW)(T)(VCAG)
157	P	(Y)(THR)(SCG)(FEW)
181	K	(Y)(FW)(T)(VAH)
197	R	(TYD)(E)(SCG)(FVLAWPI)
115	S	(R)(K)(FWH)(Q)
228	F	(KE)(T)(R)(QD)
114	E	(FWH)(R)(YVA)(CG)
249	P	(R)(Y)(H)(TK)
199	N	(Y)(H)(FW)(R)
246	T	(KR)(QH)(FMW)(E)

Table 7. Disruptive mutations for the surface patch in 1nr0A.

Another group of surface residues is shown in Fig.8. The right panel shows (in blue) the rest of the larger cluster this surface belongs to. The residues belonging to this surface "patch" are listed in Table 8, while Table 9 suggests possible disruptive replacements for these residues (see Section 3.6).

res	type	substitutions(%)	cvg
18	R	R(100)	0.03
260	D	D(100)	0.03
240	G	G(86)S(13)	0.09
264	K	K(86)R(13)	0.10

continued in next column

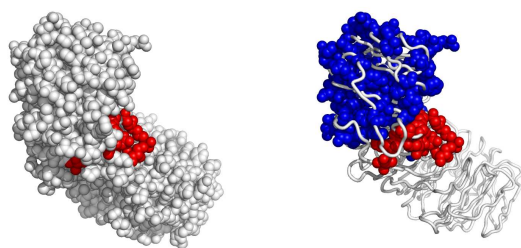


Fig. 8. Another possible active surface on the chain 1nr0A. The larger cluster it belongs to is shown in blue.

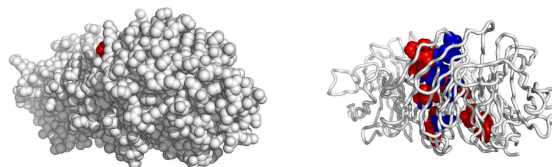


Fig. 9. Another possible active surface on the chain 1nr0A. The larger cluster it belongs to is shown in blue.

Table 8. continued			
res	type	substitutions(%)	cvg
19	G	G(73)N(13)P(13)	0.15
286	Q	Q(73)M(13)S(13)	0.16
283	I	V(73)I(13)H(13)	0.18
302	A	L(73)A(13)G(13)	0.18
238	H	H(86)E(6)I(6)	0.19
276	T	T(86)R(6)S(6)	0.19
241	S	G(59)S(40)	0.21
259	A	G(59)A(40)	0.21

Table 8. Residues forming surface "patch" in 1nr0A.

Table 9.		
res	type	disruptive mutations
18	R	(TD)(SYEVCLAPIG)(FMW)(N)
260	D	(R)(FWH)(KYVCAG)(TQM)
240	G	(KR)(E)(FQMW)(D)
264	K	(Y)(T)(FW)(SVCAG)
19	G	(R)(E)(H)(K)
286	Q	(Y)(H)(FW)(T)
283	I	(R)(Y)(T)(E)
302	A	(R)(Y)(KE)(H)
238	H	(T)(E)(CG)(Q)
276	T	(K)(FW)(MR)(H)
241	S	(KR)(FQMW)(E)(NYLPI)
259	A	(KER)(Y)(QHD)(N)

Table 9. Disruptive mutations for the surface patch in 1nr0A.

Another group of surface residues is shown in Fig.9. The right panel shows (in blue) the rest of the larger cluster this surface belongs to. The residues belonging to this surface "patch" are listed in Table 10, while Table 11 suggests possible disruptive replacements for these residues (see Section 3.6).

Table 10.			
res	type	substitutions(%)	cvg
323	H	H(100)	0.03
<i>continued in next column</i>			

Table 10. continued			
res	type	substitutions(%)	cvg
351	W	W(100)	0.03
387	D	D(100)	0.03
325	K	K(86)N(13)	0.09
601	D	D(86)S(13)	0.09
607	W	W(86)F(13)	0.09
348	I	I(86)V(13)	0.10
345	E	D(86)E(13)	0.12
356	G	G(93)D(6)	0.13
605	K	K(73)R(13)I(13)	0.16
602	S	A(73)S(13)G(13)	0.18
366	H	H(86)Q(6)N(6)	0.22
389	H	T(73)H(13)K(13)	0.25

Table 10. Residues forming surface "patch" in 1nr0A.

Table 11.		
res	type	disruptive mutations
323	H	(E)(TQMD)(SNKVCLAPIG)(YR)
351	W	(KE)(TQD)(SNCRG)(M)
387	D	(R)(FWH)(KYVCAG)(TQM)
325	K	(Y)(FTW)(SVCAG)(H)
601	D	(R)(FWH)(K)(Y)
607	W	(KE)(TQD)(SNCRG)(M)
348	I	(YR)(H)(TKE)(SQCDG)
345	E	(FWH)(R)(YVCAG)(T)
356	G	(R)(K)(FWH)(EQM)
605	K	(Y)(T)(FW)(S)
602	S	(KR)(QH)(FMW)(E)
366	H	(T)(E)(D)(SVCAG)
389	H	(E)(MD)(T)(Q)

Table 11. Disruptive mutations for the surface patch in 1nr0A.

3 NOTES ON USING TRACE RESULTS

3.1 Coverage

Trace results are commonly expressed in terms of coverage: the residue is important if its "coverage" is small - that is if it belongs to

some small top percentage of residues [100% is all of the residues in a chain], according to trace. The ET results are presented in the form of a table, usually limited to top 25% percent of residues (or to some nearby percentage), sorted by the strength of the presumed evolutionary pressure. (I.e., the smaller the coverage, the stronger the pressure on the residue.) Starting from the top of that list, mutating a couple of residues should affect the protein somehow, with the exact effects to be determined experimentally.

3.2 Known substitutions

One of the table columns is “substitutions” - other amino acid types seen at the same position in the alignment. These amino acid types may be interchangeable at that position in the protein, so if one wants to affect the protein by a point mutation, they should be avoided. For example if the substitutions are “RVK” and the original protein has an R at that position, it is advisable to try anything, but RVK. Conversely, when looking for substitutions which will *not* affect the protein, one may try replacing, R with K, or (perhaps more surprisingly), with V. The percentage of times the substitution appears in the alignment is given in the immediately following bracket. No percentage is given in the cases when it is smaller than 1%. This is meant to be a rough guide - due to rounding errors these percentages often do not add up to 100%.

3.3 Surface

To detect candidates for novel functional interfaces, first we look for residues that are solvent accessible (according to DSSP program) by at least 10\AA^2 , which is roughly the area needed for one water molecule to come in the contact with the residue. Furthermore, we require that these residues form a “cluster” of residues which have neighbor within 5\AA from any of their heavy atoms.

Note, however, that, if our picture of protein evolution is correct, the neighboring residues which *are not* surface accessible might be equally important in maintaining the interaction specificity - they should not be automatically dropped from consideration when choosing the set for mutagenesis. (Especially if they form a cluster with the surface residues.)

3.4 Number of contacts

Another column worth noting is denoted “noc/bb”; it tells the number of contacts heavy atoms of the residue in question make across the interface, as well as how many of them are realized through the backbone atoms (if all or most contacts are through the backbone, mutation presumably won’t have strong impact). Two heavy atoms are considered to be “in contact” if their centers are closer than 5\AA .

3.5 Annotation

If the residue annotation is available (either from the pdb file or from other sources), another column, with the header “annotation” appears. Annotations carried over from PDB are the following: site (indicating existence of related site record in PDB), S-S (disulfide bond forming residue), hb (hydrogen bond forming residue, jb (james bond forming residue), and sb (for salt bridge forming residue).

3.6 Mutation suggestions

Mutation suggestions are completely heuristic and based on complementarity with the substitutions found in the alignment. Note that they are meant to be **disruptive** to the interaction of the protein with its ligand. The attempt is made to complement the following

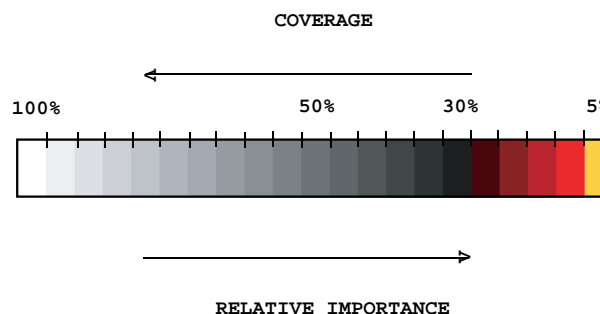


Fig. 10. Coloring scheme used to color residues by their relative importance.

properties: small [*AVGSTC*], medium [*LPNQDEMIK*], large [*WFYHR*], hydrophobic [*LPVAMWFI*], polar [*GTCTY*]; positively [*KHR*], or negatively [*DE*] charged, aromatic [*WFYH*], long aliphatic chain [*EKRQM*], OH-group possession [*SDETY*], and NH₂ group possession [*NQRK*]. The suggestions are listed according to how different they appear to be from the original amino acid, and they are grouped in round brackets if they appear equally disruptive. From left to right, each bracketed group of amino acid types resembles more strongly the original (i.e. is, presumably, less disruptive) These suggestions are tentative - they might prove disruptive to the fold rather than to the interaction. Many researcher will choose, however, the straightforward alanine mutations, especially in the beginning stages of their investigation.

4 APPENDIX

4.1 File formats

Files with extension “ranks_sorted” are the actual trace results. The fields in the table in this file:

- alignment# number of the position in the alignment
- residue# residue number in the PDB file
- type amino acid type
- rank rank of the position according to older version of ET
- variability has two subfields:
 1. number of different amino acids appearing in in this column of the alignment
 2. their type
- rho ET score - the smaller this value, the lesser variability of this position across the branches of the tree (and, presumably, the greater the importance for the protein)
- cvg coverage - percentage of the residues on the structure which have this rho or smaller
- gaps percentage of gaps in this column

4.2 Color schemes used

The following color scheme is used in figures with residues colored by cluster size: black is a single-residue cluster; clusters composed of more than one residue colored according to this hierarchy (ordered by descending size): red, blue, yellow, green, purple, azure, turquoise, brown, coral, magenta, LightSalmon, SkyBlue, violet, gold, bisque, LightSlateBlue, orchid, RosyBrown, MediumAquamarine, DarkOliveGreen, CornflowerBlue, grey55, burlywood, LimeGreen, tan, DarkOrange, DeepPink, maroon, BlanchedAlmond.

The colors used to distinguish the residues by the estimated evolutionary pressure they experience can be seen in Fig. 10.

4.3 Credits

4.3.1 Alistat *alistat* reads a multiple sequence alignment from the file and shows a number of simple statistics about it. These statistics include the format, the number of sequences, the total number of residues, the average and range of the sequence lengths, and the alignment length (e.g. including gap characters). Also shown are some percent identities. A percent pairwise alignment identity is defined as $(\text{idents} / \text{MIN}(\text{len1}, \text{len2}))$ where *idents* is the number of exact identities and *len1*, *len2* are the unaligned lengths of the two sequences. The "average percent identity", "most related pair", and "most unrelated pair" of the alignment are the average, maximum, and minimum of all $(N)(N-1)/2$ pairs, respectively. The "most distant seq" is calculated by finding the maximum pairwise identity (best relative) for all *N* sequences, then finding the minimum of these *N* numbers (hence, the most outlying sequence). *alistat* is copyrighted by HHMI/Washington University School of Medicine, 1992-2001, and freely distributed under the GNU General Public License.

4.3.2 CE To map ligand binding sites from different source structures, *report_maker* uses the CE program: <http://cl.sdsc.edu/>. Shindyalov IN, Bourne PE (1998) "Protein structure alignment by incremental combinatorial extension (CE) of the optimal path". *Protein Engineering* 11(9) 739-747.

4.3.3 DSSP In this work a residue is considered solvent accessible if the DSSP program finds it exposed to water by at least 10\AA^2 , which is roughly the area needed for one water molecule to come in the contact with the residue. DSSP is copyrighted by W. Kabsch, C. Sander and MPI-MF, 1983, 1985, 1988, 1994 1995, CMBI version by Elmar.Krieger@cmbi.kun.nl November 18,2002,

<http://www.cmbi.kun.nl/gv/dssp/descrip.html>.

4.3.4 HSSP Whenever available, *report_maker* uses HSSP alignment as a starting point for the analysis (sequences shorter than 75% of the query are taken out, however); R. Schneider, A. de Daruvar, and C. Sander. "The HSSP database of protein structure-sequence alignments." *Nucleic Acids Res.*, 25:226-230, 1997.

<http://swift.cmbi.kun.nl/swift/hssp/>

4.3.5 LaTeX The text for this report was processed using L^AT_EX; Leslie Lamport, "LaTeX: A Document Preparation System Addison-Wesley," Reading, Mass. (1986).

4.3.6 Muscle When making alignments "from scratch", *report_maker* uses Muscle alignment program: Edgar, Robert C. (2004), "MUSCLE: multiple sequence alignment with high accuracy and high throughput." *Nucleic Acids Research* 32(5), 1792-97.

<http://www.drive5.com/muscle/>

4.3.7 Pymol The figures in this report were produced using Pymol. The scripts can be found in the attachment. Pymol is an open-source application copyrighted by DeLano Scientific LLC (2005). For more information about Pymol see <http://pymol.sourceforge.net/>. (Note for Windows users: the attached package needs to be unzipped for Pymol to read the scripts and launch the viewer.)

4.4 Note about ET Viewer

Dan Morgan from the Lichtarge lab has developed a visualization tool specifically for viewing trace results. If you are interested, please visit:

<http://mammoth.bcm.tmc.edu/traceview/>

The viewer is self-unpacking and self-installing. Input files to be used with ETV (extension .etvx) can be found in the attachment to the main report.

4.5 Citing this work

The method used to rank residues and make predictions in this report can be found in Mihalek, I., I. Reš, O. Lichtarge. (2004). "A Family of Evolution-Entropy Hybrid Methods for Ranking of Protein Residues by Importance" *J. Mol. Bio.* **336**: 1265-82. For the original version of ET see O. Lichtarge, H.Bourne and F. Cohen (1996). "An Evolutionary Trace Method Defines Binding Surfaces Common to Protein Families" *J. Mol. Bio.* **257**: 342-358.

report_maker itself is described in Mihalek I., I. Res and O. Lichtarge (2006). "Evolutionary Trace Report Maker: a new type of service for comparative analysis of proteins." *Bioinformatics* **22**:1656-7.

4.6 About report_maker

report_maker was written in 2006 by Ivana Mihalek. The 1D ranking visualization program was written by Ivica Reš. *report_maker* is copyrighted by Lichtarge Lab, Baylor College of Medicine, Houston.

4.7 Attachments

The following files should accompany this report:

- 1nr0A.complex.pdb - coordinates of 1nr0A with all of its interacting partners
- 1nr0A.etvx - ET viewer input file for 1nr0A
- 1nr0A.cluster_report.summary - Cluster report summary for 1nr0A
- 1nr0A.ranks - Ranks file in sequence order for 1nr0A
- 1nr0A.clusters - Cluster descriptions for 1nr0A
- 1nr0A.msf - the multiple sequence alignment used for the chain 1nr0A
- 1nr0A.descr - description of sequences used in 1nr0A msf
- 1nr0A.ranks_sorted - full listing of residues and their ranking for 1nr0A
- 1nr0A.1nr0AMN700.if.pml - Pymol script for Figure 5
- 1nr0A.cbvcg - used by other 1nr0A - related pymol scripts