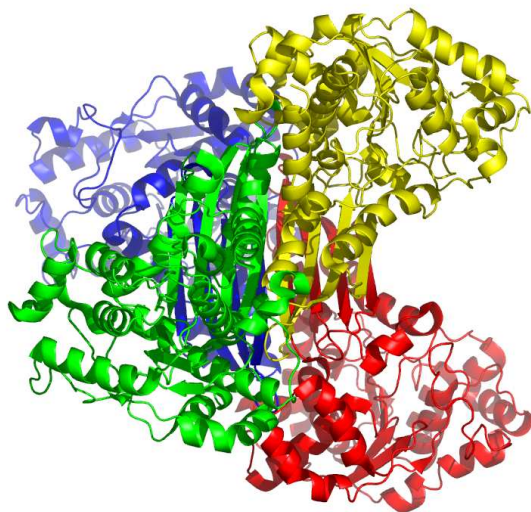


1uli

Evolutionary trace report by **report_maker**

June 20, 2010



4.3.3	DSSP	8
4.3.4	HSSP	8
4.3.5	LaTex	8
4.3.6	Muscle	8
4.3.7	Pymol	8
4.4	Note about ET Viewer	8
4.5	Citing this work	8
4.6	About report_maker	9
4.7	Attachments	9

CONTENTS

1 Introduction

2 Chain 1uliA

- 2.1 O28480 overview
- 2.2 Multiple sequence alignment for 1uliA
- 2.3 Residue ranking in 1uliA
- 2.4 Top ranking residues in 1uliA and their position on the structure
 - 2.4.1 Clustering of residues at 25% coverage.
 - 2.4.2 Overlap with known functional surfaces at 25% coverage.

3 Notes on using trace results

- 3.1 Coverage
- 3.2 Known substitutions
- 3.3 Surface
- 3.4 Number of contacts
- 3.5 Annotation
- 3.6 Mutation suggestions

4 Appendix

- 4.1 File formats
- 4.2 Color schemes used
- 4.3 Credits
 - 4.3.1 **Alistat**
 - 4.3.2 **CE**

1 INTRODUCTION

From the original Protein Data Bank entry (PDB id 1uli):

Title: Myo-inositol phosphate synthase mips from *a. fulgidus*

Compound: Mol id: 1; molecule: myo-inositol-1-phosphate synthase; chain: a, b, c, d; synonym: ino1, mips; engineered: yes

Organism, scientific name: *Archaeoglobus Fulgidus* Dsm 4304;

1uli contains a single unique chain 1uliA (392 residues long) and its homologues 1uliD, 1uliC, and 1uliB.

2 CHAIN 1U1IA

2.1 O28480 overview

From SwissProt, id O28480, 94% identical to 1uliA:

1 Description: Myo-inositol-1-phosphate synthase (Ino1).

Organism, scientific name: *Archaeoglobus fulgidus*.

1 Taxonomy: Archaea; Euryarchaeota; Archaeoglobi; Archaeoglobales; Archaeoglobaceae; *Archaeoglobus*.

1 2.2 Multiple sequence alignment for 1uliA

For the chain 1uliA, the alignment 1uliA.msf (attached) with 40 sequences was used. The alignment was downloaded from the HSSP database, and fragments shorter than 75% of the query as well as duplicate sequences were removed. It can be found in the attachment to this report, under the name of 1uliA.msf. Its statistics, from the *alistat* program are the following:

```

7   Format:                MSF
7   Number of sequences:  40
7   Total number of residues: 15087
7   Smallest:             348
7   Largest:              392
7   Average length:      377.2
7   Alignment length:    392
7   Average identity:    43%
7   Most related pair:   99%
8   Most unrelated pair: 24%
8   Most distant seq:   42%
8

```

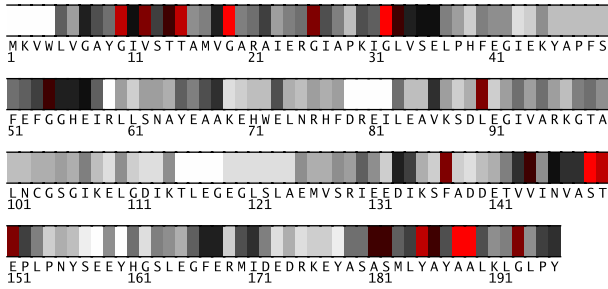


Fig. 1. Residues 1-196 in 1u1iA colored by their relative importance. (See Appendix, Fig.10, for the coloring scheme.)

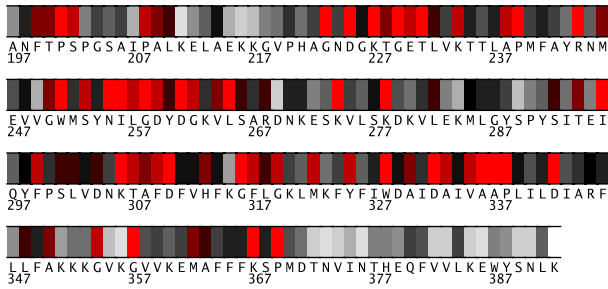


Fig. 2. Residues 197-392 in 1u1iA colored by their relative importance. (See Appendix, Fig.10, for the coloring scheme.)

Furthermore, 7% of residues show as conserved in this alignment. The alignment consists of 5% prokaryotic sequences. (Descriptions of some sequences were not readily available.) The file containing the sequence descriptions can be found in the attachment, under the name 1u1iA.descr.

2.3 Residue ranking in 1u1iA

The 1u1iA sequence is shown in Figs. 1–2, with each residue colored according to its estimated importance. The full listing of residues in 1u1iA can be found in the file called 1u1iA.ranks.sorted in the attachment.

2.4 Top ranking residues in 1u1iA and their position on the structure

In the following we consider residues ranking among top 25% of residues in the protein. Figure 3 shows residues in 1u1iA colored by their importance: bright red and yellow indicate more conserved/important residues (see Appendix for the coloring scheme). A Pymol script for producing this figure can be found in the attachment.

2.4.1 Clustering of residues at 25% coverage. Fig. 4 shows the top 25% of all residues, this time colored according to clusters they belong to. The clusters in Fig.4 are composed of the residues listed in Table 1.

Table 1.		
cluster color	size	member residues
red	91	10, 12, 14, 15, 19, 32, 33, 144, 149
<i>continued in next column</i>		

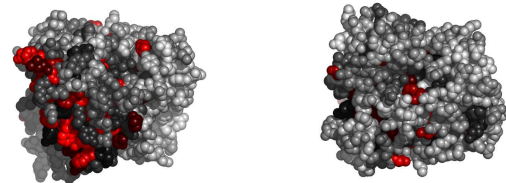
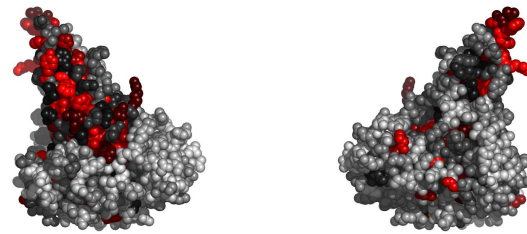


Fig. 3. Residues in 1u1iA, colored by their relative importance. Clockwise: front, back, top and bottom views.

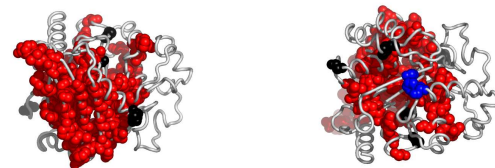


Fig. 4. Residues in 1u1iA, colored according to the cluster they belong to: red, followed by blue and yellow are the largest clusters (see Appendix for the coloring scheme). Clockwise: front, back, top and bottom views. The corresponding Pymol script is attached.

Table 1. continued		
cluster color	size	member residues
		150, 151, 181, 182, 185, 186, 188
		189, 193, 199, 200, 201, 202, 208
		209, 210, 225, 227, 228, 229, 230
<i>continued in next column</i>		

Table 1. continued		
cluster color	size	member residues
		231, 232, 234, 238, 239, 244, 246
		250, 251, 253, 255, 256, 257, 258
		259, 260, 261, 262, 264, 265, 266
		274, 278, 282, 292, 294, 296, 298
		299, 301, 302, 304, 306, 307, 308
		309, 310, 313, 316, 317, 318, 319
		322, 325, 328, 330, 332, 333, 335
		336, 337, 338, 342, 345, 348, 350
		354, 362, 363, 367, 369
		54, 137
blue	2	

Table 1. Clusters of top ranking residues in 1u1iA.

2.4.2 Overlap with known functional surfaces at 25% coverage.

The name of the ligand is composed of the source PDB identifier and the heteroatom name used in that file.

Interface with 1u1iD. Table 2 lists the top 25% of residues at the interface with 1u1iD. The following table (Table 3) suggests possible disruptive replacements for these residues (see Section 3.6).

Table 2.					
res	type	subst's (%)	cvg	noc/ bb	dist (Å)
325	Y	K (72) Q (25) Y (2)	0.12	9/0	4.22

Table 2. The top 25% of residues in 1u1iA at the interface with 1u1iD. (Field names: res: residue number in the PDB entry; type: amino acid type; substs: substitutions seen in the alignment; with the percentage of each type in the bracket; noc/bb: number of contacts with the ligand, with the number of contacts realized through backbone atoms given in the bracket; dist: distance of closest approach to the ligand.)

Table 3.		
res	type	disruptive mutations
325	Y	(VA) (K) (M) (ELPI)

Table 3. List of disruptive mutations for the top 25% of residues in 1u1iA, that are at the interface with 1u1iD.

Figure 5 shows residues in 1u1iA colored by their importance, at the interface with 1u1iD.

Interface with 1u1iB. Table 4 lists the top 25% of residues at the interface with 1u1iB. The following table (Table 5) suggests possible disruptive replacements for these residues (see Section 3.6).

Table 4.					
res	type	subst's (%)	cvg	noc/ bb	dist (Å)
19	G	G(100)	0.07	16/16	3.69
continued in next column					

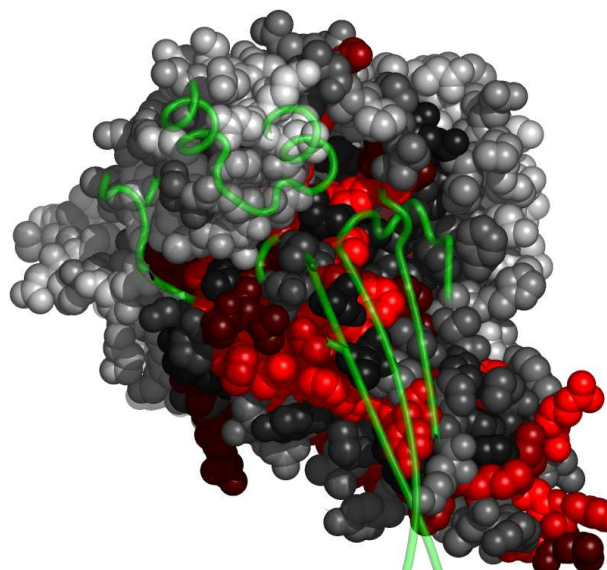


Fig. 5. Residues in 1u1iA, at the interface with 1u1iD, colored by their relative importance. 1u1iD is shown in backbone representation (See Appendix for the coloring scheme for the protein chain 1u1iA.)

Table 4. continued					
res	type	subst's (%)	cvg	noc/ bb	dist (Å)
32	G	G(97) Y(2)	0.07	35/35	2.82
227	K	K(100)	0.07	11/8	2.50
229	G	G(100)	0.07	1/1	4.90
244	R	R(100)	0.07	103/15	2.86
316	G	G(100)	0.07	26/26	3.17
337	A	A(100)	0.07	8/4	3.93
338	P	P(100)	0.07	29/11	3.62
328	W	F(69) W(29)	0.08	30/6	3.64
15	T	T(97) M(2)	0.10	11/8	2.93
317	F	W(59) F(40)	0.10	122/24	3.22
335	V	L(97) V(2)	0.10	3/0	3.72
319	G	G(97) D(2)	0.11	5/5	3.42
325	Y	K(72) Q(25) Y(2)	0.12	61/34	2.69
322	M	M(92) I(5) V(2)	0.13	24/3	3.31
228	T	T(75) S(25)	0.18	2/2	4.49
246	M	L(90)	0.18	11/6	4.07
continued in next column					

Table 4. continued					
res	type	subst's (%)	cvg	noc/ bb	dist (Å)
330	A	M (7)	0.18	22/12	3.30
		I (2)			
		C (69)			
232	L	A (7)	0.22	24/4	3.30
		G (22)			
		L (72)			
318	L	M (22)	0.22	35/5	3.44
		F (5)			
		L (72)			
33	L	M (27)	0.24	24/17	2.50
		S (57)			
		C (10)			
		M (10)			
		L (22)			

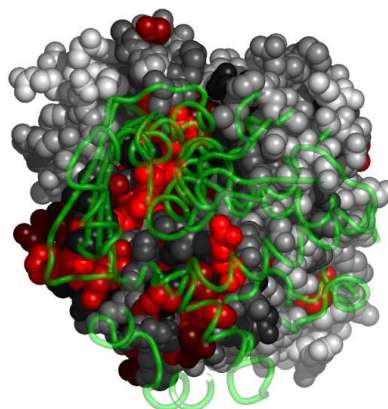


Table 4. The top 25% of residues in 1u1iA at the interface with 1u1iB. (Field names: res: residue number in the PDB entry; type: amino acid type; substs: substitutions seen in the alignment; with the percentage of each type in the bracket; noc/ bb: number of contacts with the ligand, with the number of contacts realized through backbone atoms given in the bracket; dist: distance of closest approach to the ligand.)

Fig. 6. Residues in 1u1iA, at the interface with 1u1iB, colored by their relative importance. 1u1iB is shown in backbone representation (See Appendix for the coloring scheme for the protein chain 1u1iA.)

Table 5.		
res	type	disruptive mutations
19	G	(KER) (FQMWH) (NYLPI) (SVA)
32	G	(K) (ER) (QM) (D)
227	K	(Y) (FTW) (SVCAG) (HD)
229	G	(KER) (FQMWH) (NYLPI) (SVA)
244	R	(TD) (SYEVCLAPIG) (FMW) (N)
316	G	(KER) (FQMWH) (NYLPI) (SVA)
337	A	(KYER) (QHD) (N) (FTMW)
338	P	(YR) (TH) (SKECG) (FQWD)
328	W	(KE) (TQD) (SNCRG) (M)
15	T	(R) (KH) (FW) (Q)
317	F	(KE) (TQD) (SNCRG) (M)
335	V	(YR) (KE) (H) (QD)
319	G	(R) (K) (FWH) (EQM)
325	Y	(VA) (K) (M) (ELPI)
322	M	(Y) (H) (T) (R)
228	T	(KR) (FQMWH) (NELPI) (D)
246	M	(Y) (TH) (R) (CG)
330	A	(KER) (Y) (QHD) (N)
232	L	(YR) (T) (H) (KECG)
318	L	(Y) (R) (TH) (SCG)
33	L	(R) (Y) (H) (K)

Table 5. List of disruptive mutations for the top 25% of residues in 1u1iA, that are at the interface with 1u1iB.

Figure 6 shows residues in 1u1iA colored by their importance, at the interface with 1u1iB.

Interface with 1u1iC. Table 6 lists the top 25% of residues at the interface with 1u1iC. The following table (Table 7) suggests possible disruptive replacements for these residues (see Section 3.6).

Table 6.					
res	type	subst's (%)	cvg	noc/ bb	dist (Å)
251	W	W(100)	0.07	9/9	3.80
256	I	I(82) L(17)	0.08	7/0	3.99
309	F	W(97) F(2)	0.10	24/0	3.37
325	Y	K(72) Q(25) Y(2)	0.12	29/0	3.61
299	F	Y(72) V(20) I(5) F(2)	0.14	56/7	3.34
307	T	E(72) V(5) T(20) I(2)	0.14	3/0	4.57
313	H	D(72) H(17) A(7) T(2)	0.16	39/0	3.29
250	G	G(75) S(17) A(7)	0.17	13/13	3.46
302	L	R(72) L(20) M(7)	0.21	16/3	4.18
301	S	P(72) D(10) A(5) V(2) S(10)	0.24	28/9	2.55
298	Y	Y(84) D(7) H(5) K(2)	0.25	22/14	2.71

Table 6. The top 25% of residues in 1u1iA at the interface with 1u1iC. (Field names: res: residue number in the PDB entry; type: amino acid type; substs: substitutions seen in the alignment; with the percentage of each type in the bracket; noc/bb: number of contacts with the ligand, with the number of contacts realized through backbone atoms given in the bracket; dist: distance of closest approach to the ligand.)

Table 7.		
res	type	disruptive mutations
251	W	(KE) (TQD) (SNCRG) (M)
256	I	(YR) (TH) (SKECG) (FQWD)
309	F	(KE) (TQD) (SNCRG) (M)
325	Y	(VA) (K) (M) (ELPI)
299	F	(K) (E) (Q) (DR)
307	T	(R) (K) (H) (FW)

continued in next column

Table 7. continued		
res	type	disruptive mutations
313	H	(E) (Q) (KM) (D)
250	G	(KR) (E) (QH) (FMW)
302	L	(Y) (T) (H) (R)
301	S	(R) (K) (H) (YQ)
298	Y	(K) (M) (VQA) (ELPIR)

Table 7. List of disruptive mutations for the top 25% of residues in 1u1iA, that are at the interface with 1u1iC.

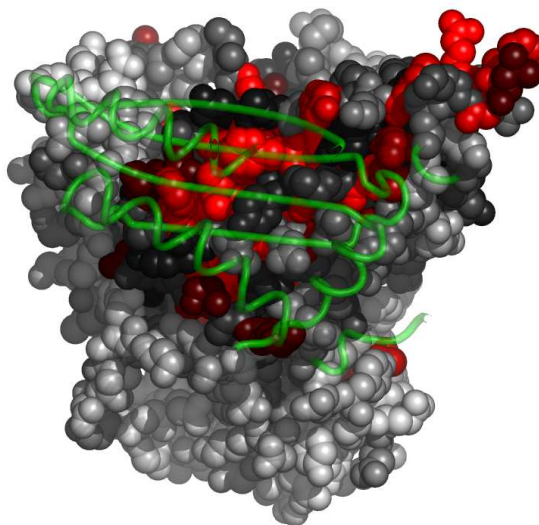


Fig. 7. Residues in 1u1iA, at the interface with 1u1iC, colored by their relative importance. 1u1iC is shown in backbone representation (See Appendix for the coloring scheme for the protein chain 1u1iA.)

Figure 7 shows residues in 1u1iA colored by their importance, at the interface with 1u1iC.

NAD binding site. Table 8 lists the top 25% of residues at the interface with 1u1iNAD396 (nad). The following table (Table 9) suggests possible disruptive replacements for these residues (see Section 3.6).

Table 8.					
res	type	subst's (%)	cvg	noc/ bb	dist (Å)
201	P	P(100)	0.07	3/0	4.41
225	D	D(100)	0.07	2/0	4.16
261	D	D(100)	0.07	21/8	2.73
265	L	L(100)	0.07	3/0	3.45
274	K	K(100)	0.07	21/0	3.29
332	D	D(100)	0.07	24/9	3.15
336	A	A(100)	0.07	7/2	3.89

continued in next column

Table 8. continued					
res	type	subst's (%)	cvg	noc/ bb	dist (Å)
149	S	S(97) A(2)	0.08	44/29	2.80
333	A	S(97) A(2)	0.10	4/4	3.91
335	V	L(97) V(2)	0.10	1/0	4.54
10	G	G(97) . (2)	0.12	26/26	2.75
150	T	T(92) V(5) S(2)	0.12	19/9	2.56
185	Y	Y(92) T(5) N(2)	0.13	13/0	3.12
200	T	A(47) T(50) S(2)	0.15	15/5	3.83
199	F	G(50) A(7) F(42)	0.16	22/7	3.61
151	E	E(87) Q(7) D(2) T(2)	0.17	1/0	4.89
228	T	T(75) S(25)	0.18	14/0	2.78
12	V	V(92) M(2) I(5)	0.19	19/5	3.13
304	D	D(87) E(10) Q(2)	0.21	4/0	3.57
181	A	S(2) P(65) A(25) . (2) F(2) V(2)	0.22	3/1	3.46
260	Y	R(69) G(17) K(2) M(5) Y(2) L(2)	0.23	12/4	3.04

Table 8. The top 25% of residues in 1u1iA at the interface with NAD. (Field names: res: residue number in the PDB entry; type: amino acid type; substs: substitutions seen in the alignment; with the percentage of each type in the bracket; noc/ bb: number of contacts with the ligand, with the number of contacts realized through backbone atoms given in the bracket; dist: distance of closest approach to the ligand.)

Table 9.		
res	type	disruptive mutations
201	P	(YR) (TH) (SKECG) (FQWD)
225	D	(R) (FWH) (KYVCAG) (TQM)
261	D	(R) (FWH) (KYVCAG) (TQM)
265	L	(YR) (TH) (SKECG) (FQWD)
274	K	(Y) (FTW) (SVCAG) (HD)
332	D	(R) (FWH) (KYVCAG) (TQM)
336	A	(KYER) (QHD) (N) (FTMW)
149	S	(KR) (QH) (FYEMW) (N)
333	A	(KR) (YE) (QH) (D)
335	V	(YR) (KE) (H) (QD)
10	G	(KER) (FQMWH) (NLPI) (Y)
150	T	(KR) (QH) (FMW) (E)
185	Y	(K) (M) (Q) (R)
200	T	(KR) (QH) (FMW) (E)
199	F	(KE) (D) (Q) (R)
151	E	(FWH) (R) (Y) (VA)
228	T	(KR) (FQMWH) (NELPI) (D)
12	V	(Y) (R) (H) (KE)
304	D	(FWHR) (Y) (VCAG) (T)
181	A	(KR) (E) (Y) (Q)
260	Y	(K) (E) (QM) (VAR)

Table 9. List of disruptive mutations for the top 25% of residues in 1u1iA, that are at the interface with NAD.

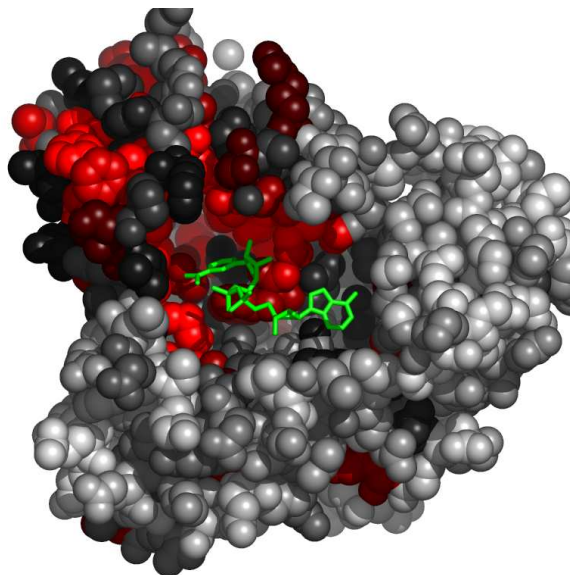


Fig. 8. Residues in 1u1iA, at the interface with NAD, colored by their relative importance. The ligand (NAD) is colored green. Atoms further than 30Å away from the geometric center of the ligand, as well as on the line of sight to the ligand were removed. (See Appendix for the coloring scheme for the protein chain 1u1iA.)

Figure 8 shows residues in 1u1iA colored by their importance, at the interface with 1u1iNAD396.

Phosphate ion binding site. Table 10 lists the top 25% of residues at the interface with 1u1iPO4395 (phosphate ion). The following table (Table 11) suggests possible disruptive replacements for these residues (see Section 3.6).

Table 10.					
res	type	subst's (%)	cvg	noc/ bb	dist (Å)
225	D	D(100)	0.07	1/0	4.88
227	K	K(100)	0.07	5/5	4.26
229	G	G(100)	0.07	12/12	2.62
231	T	T(100)	0.07	16/8	3.09
255	N	N(100)	0.07	1/0	4.83
274	K	K(100)	0.07	2/0	4.39
278	K	K(100)	0.07	12/0	2.72
306	K	K(100)	0.07	5/0	3.19
332	D	D(100)	0.07	2/0	4.78
367	K	K(100)	0.07	11/0	2.80
230	E	Q(84) E(14)	0.13	15/10	2.61
228	T	T(75) S(25)	0.18	13/8	3.77
232	L	L(72) M(22) F(5)	0.22	1/1	4.28

Table 10. The top 25% of residues in 1u1iA at the interface with phosphate ion. (Field names: res: residue number in the PDB entry; type: amino acid type; substs: substitutions seen in the alignment; with the percentage of each type in the bracket; noc/bb: number of contacts with the ligand, with the number of contacts realized through backbone atoms given in the bracket; dist: distance of closest approach to the ligand.)

Table 11.		
res	type	disruptive mutations
225	D	(R) (FWH) (KYVCAG) (TQM)
227	K	(Y) (FTW) (SVCAG) (HD)
229	G	(KER) (FQMWH) (NYLPI) (SVA)
231	T	(KR) (FQMWH) (NELPI) (D)
255	N	(Y) (FTWH) (SEVCARG) (MD)
274	K	(Y) (FTW) (SVCAG) (HD)
278	K	(Y) (FTW) (SVCAG) (HD)
306	K	(Y) (FTW) (SVCAG) (HD)
332	D	(R) (FWH) (KYVCAG) (TQM)
367	K	(Y) (FTW) (SVCAG) (HD)
230	E	(FWH) (Y) (VCAG) (TR)
228	T	(KR) (FQMWH) (NELPI) (D)
232	L	(YR) (T) (H) (KECG)

Table 11. List of disruptive mutations for the top 25% of residues in 1u1iA, that are at the interface with phosphate ion.

Figure 9 shows residues in 1u1iA colored by their importance, at the interface with 1u1iPO4395.

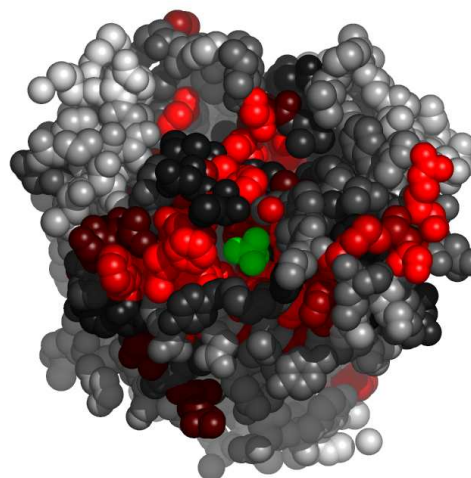


Fig. 9. Residues in 1u1iA, at the interface with phosphate ion, colored by their relative importance. The ligand (phosphate ion) is colored green. Atoms further than 30Å away from the geometric center of the ligand, as well as on the line of sight to the ligand were removed. (See Appendix for the coloring scheme for the protein chain 1u1iA.)

3 NOTES ON USING TRACE RESULTS

3.1 Coverage

Trace results are commonly expressed in terms of coverage: the residue is important if its “coverage” is small - that is if it belongs to some small top percentage of residues [100% is all of the residues in a chain], according to trace. The ET results are presented in the form of a table, usually limited to top 25% percent of residues (or to some nearby percentage), sorted by the strength of the presumed evolutionary pressure. (I.e., the smaller the coverage, the stronger the pressure on the residue.) Starting from the top of that list, mutating a couple of residues should affect the protein somehow, with the exact effects to be determined experimentally.

3.2 Known substitutions

One of the table columns is “substitutions” - other amino acid types seen at the same position in the alignment. These amino acid types may be interchangeable at that position in the protein, so if one wants to affect the protein by a point mutation, they should be avoided. For example if the substitutions are “RVK” and the original protein has an R at that position, it is advisable to try anything, but RVK. Conversely, when looking for substitutions which will *not* affect the protein, one may try replacing, R with K, or (perhaps more surprisingly), with V. The percentage of times the substitution appears in the alignment is given in the immediately following bracket. No percentage is given in the cases when it is smaller than 1%. This is meant to be a rough guide - due to rounding errors these percentages often do not add up to 100%.

3.3 Surface

To detect candidates for novel functional interfaces, first we look for residues that are solvent accessible (according to DSSP program) by at least 10\AA^2 , which is roughly the area needed for one water molecule to come in the contact with the residue. Furthermore, we require that these residues form a “cluster” of residues which have neighbor within 5\AA from any of their heavy atoms.

Note, however, that, if our picture of protein evolution is correct, the neighboring residues which *are not* surface accessible might be equally important in maintaining the interaction specificity - they should not be automatically dropped from consideration when choosing the set for mutagenesis. (Especially if they form a cluster with the surface residues.)

3.4 Number of contacts

Another column worth noting is denoted “noc/bb”; it tells the number of contacts heavy atoms of the residue in question make across the interface, as well as how many of them are realized through the backbone atoms (if all or most contacts are through the backbone, mutation presumably won't have strong impact). Two heavy atoms are considered to be “in contact” if their centers are closer than 5\AA .

3.5 Annotation

If the residue annotation is available (either from the pdb file or from other sources), another column, with the header “annotation” appears. Annotations carried over from PDB are the following: site (indicating existence of related site record in PDB), S-S (disulfide bond forming residue), hb (hydrogen bond forming residue, jb (james bond forming residue), and sb (for salt bridge forming residue).

3.6 Mutation suggestions

Mutation suggestions are completely heuristic and based on complementarity with the substitutions found in the alignment. Note that they are meant to be **disruptive** to the interaction of the protein with its ligand. The attempt is made to complement the following properties: small [AVGSTC], medium [LPNQDEMIK], large [WFYHR], hydrophobic [LPVAMWFI], polar [GTCY]; positively [KHR], or negatively [DE] charged, aromatic [WFYH], long aliphatic chain [EK RQM], OH-group possession [SDETY], and NH2 group possession [NQRK]. The suggestions are listed according to how different they appear to be from the original amino acid, and they are grouped in round brackets if they appear equally disruptive. From left to right, each bracketed group of amino acid types resembles more strongly the original (i.e. is, presumably, less disruptive) These suggestions are tentative - they might prove disruptive to the fold rather than to the interaction. Many researcher will choose, however, the straightforward alanine mutations, especially in the beginning stages of their investigation.

4 APPENDIX

4.1 File formats

Files with extension “ranks_sorted” are the actual trace results. The fields in the table in this file:

- alignment# number of the position in the alignment
- residue# residue number in the PDB file
- type amino acid type
- rank rank of the position according to older version of ET

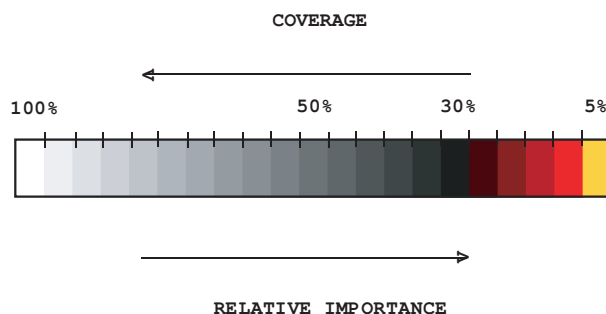


Fig. 10. Coloring scheme used to color residues by their relative importance.

- variability has two subfields:
 1. number of different amino acids appearing in in this column of the alignment
 2. their type
- rho ET score - the smaller this value, the lesser variability of this position across the branches of the tree (and, presumably, the greater the importance for the protein)
- cvg coverage - percentage of the residues on the structure which have this rho or smaller
- gaps percentage of gaps in this column

4.2 Color schemes used

The following color scheme is used in figures with residues colored by cluster size: black is a single-residue cluster; clusters composed of more than one residue colored according to this hierarchy (ordered by descending size): red, blue, yellow, green, purple, azure, turquoise, brown, coral, magenta, LightSalmon, SkyBlue, violet, gold, bisque, LightSlateBlue, orchid, RosyBrown, MediumAquamarine, DarkOliveGreen, CornflowerBlue, grey55, burlywood, LimeGreen, tan, DarkOrange, DeepPink, maroon, BlanchedAlmond.

The colors used to distinguish the residues by the estimated evolutionary pressure they experience can be seen in Fig. 10.

4.3 Credits

4.3.1 Alistat *alistat* reads a multiple sequence alignment from the file and shows a number of simple statistics about it. These statistics include the format, the number of sequences, the total number of residues, the average and range of the sequence lengths, and the alignment length (e.g. including gap characters). Also shown are some percent identities. A percent pairwise alignment identity is defined as $(\text{idents} / \text{MIN}(\text{len1}, \text{len2}))$ where *idents* is the number of exact identities and *len1*, *len2* are the unaligned lengths of the two sequences. The “average percent identity”, “most related pair”, and “most unrelated pair” of the alignment are the average, maximum, and minimum of all $(N)(N-1)/2$ pairs, respectively. The “most distant seq” is calculated by finding the maximum pairwise identity (best relative) for all *N* sequences, then finding the minimum of these *N* numbers (hence, the most outlying sequence). *alistat* is copyrighted

by HHMI/Washington University School of Medicine, 1992-2001, and freely distributed under the GNU General Public License.

4.3.2 CE To map ligand binding sites from different source structures, `report_maker` uses the CE program: <http://cl.sdsc.edu/>. Shindyalov IN, Bourne PE (1998) "Protein structure alignment by incremental combinatorial extension (CE) of the optimal path." *Protein Engineering* 11(9) 739-747.

4.3.3 DSSP In this work a residue is considered solvent accessible if the DSSP program finds it exposed to water by at least 10\AA^2 , which is roughly the area needed for one water molecule to come in the contact with the residue. DSSP is copyrighted by W. Kabsch, C. Sander and MPI-MF, 1983, 1985, 1988, 1994 1995, CMBI version by Elmar.Krieger@cmbi.kun.nl November 18,2002,

<http://www.cmbi.kun.nl/gv/dssp/descrip.html>.

4.3.4 HSSP Whenever available, `report_maker` uses HSSP alignment as a starting point for the analysis (sequences shorter than 75% of the query are taken out, however); R. Schneider, A. de Daruvar, and C. Sander. "The HSSP database of protein structure-sequence alignments." *Nucleic Acids Res.*, 25:226-230, 1997.

<http://swift.cmbi.kun.nl/swift/hssp/>

4.3.5 LaTeX The text for this report was processed using L^AT_EX; Leslie Lamport, "LaTeX: A Document Preparation System Addison-Wesley," Reading, Mass. (1986).

4.3.6 Muscle When making alignments "from scratch", `report_maker` uses Muscle alignment program: Edgar, Robert C. (2004), "MUSCLE: multiple sequence alignment with high accuracy and high throughput." *Nucleic Acids Research* 32(5), 1792-97.

<http://www.drive5.com/muscle/>

4.3.7 Pymol The figures in this report were produced using Pymol. The scripts can be found in the attachment. Pymol is an open-source application copyrighted by DeLano Scientific LLC (2005). For more information about Pymol see <http://pymol.sourceforge.net/>. (Note for Windows users: the attached package needs to be unzipped for Pymol to read the scripts and launch the viewer.)

4.4 Note about ET Viewer

Dan Morgan from the Lichtarge lab has developed a visualization tool specifically for viewing trace results. If you are interested, please visit:

<http://mammoth.bcm.tmc.edu/traceview/>

The viewer is self-unpacking and self-installing. Input files to be used with ETV (extension .etvx) can be found in the attachment to the main report.

4.5 Citing this work

The method used to rank residues and make predictions in this report can be found in Mihalek, I., I. Reš, O. Lichtarge. (2004). "A Family of Evolution-Entropy Hybrid Methods for Ranking of Protein Residues by Importance" *J. Mol. Bio.* **336**: 1265-82. For the original version of ET see O. Lichtarge, H.Bourne and F. Cohen (1996). "An Evolutionary Trace Method Defines Binding Surfaces Common to Protein Families" *J. Mol. Bio.* **257**: 342-358.

`report_maker` itself is described in Mihalek I., I. Res and O. Lichtarge (2006). "Evolutionary Trace Report Maker: a new type of service for comparative analysis of proteins." *Bioinformatics* **22**:1656-7.

4.6 About report_maker

`report_maker` was written in 2006 by Ivana Mihalek. The 1D ranking visualization program was written by Ivica Reš. `report_maker` is copyrighted by Lichtarge Lab, Baylor College of Medicine, Houston.

4.7 Attachments

The following files should accompany this report:

- `luliA.complex.pdb` - coordinates of luliA with all of its interacting partners
- `luliA.etvx` - ET viewer input file for luliA
- `luliA.cluster_report.summary` - Cluster report summary for luliA
- `luliA.ranks` - Ranks file in sequence order for luliA
- `luliA.clusters` - Cluster descriptions for luliA
- `luliA.msf` - the multiple sequence alignment used for the chain luliA
- `luliA.descr` - description of sequences used in luliA msf
- `luliA.ranks_sorted` - full listing of residues and their ranking for luliA
- `luliA.luliD.if.pml` - Pymol script for Figure 5
- `luliA.cbvcg` - used by other luliA - related pymol scripts
- `luliA.luliB.if.pml` - Pymol script for Figure 6
- `luliA.luliC.if.pml` - Pymol script for Figure 7
- `luliA.luliNAD396.if.pml` - Pymol script for Figure 8
- `luliA.luliPO4395.if.pml` - Pymol script for Figure 9