

1ywk

Evolutionary trace report by **report_maker**

July 16, 2010



CONTENTS

1 Introduction

2 Chain 1ywkA

- 2.1 Q838L9 overview
- 2.2 Multiple sequence alignment for 1ywkA
- 2.3 Residue ranking in 1ywkA
- 2.4 Top ranking residues in 1ywkA and their position on the structure
 - 2.4.1 Clustering of residues at 25% coverage.
 - 2.4.2 Overlap with known functional surfaces at 25% coverage.
 - 2.4.3 Possible novel functional surfaces at 25% coverage.

3 Notes on using trace results

- 3.1 Coverage
- 3.2 Known substitutions
- 3.3 Surface
- 3.4 Number of contacts
- 3.5 Annotation
- 3.6 Mutation suggestions

4 Appendix

- 4.1 File formats
- 4.2 Color schemes used
- 4.3 Credits

4.3.1	Alistat	6
4.3.2	CE	6
4.3.3	DSSP	6
4.3.4	HSSP	7
4.3.5	LaTeX	7
4.3.6	Muscle	7
4.3.7	Pymol	7
4.4	Note about ET Viewer	7
4.5	Citing this work	7
4.6	About report_maker	7
4.7	Attachments	7

1 INTRODUCTION

From the original Protein Data Bank entry (PDB id 1ywk):

Title: Crystal structure of 4-deoxy-1-threo-5-hexosulose-uronate ketol-isomerase from enterococcus faecalis

Compound: Mol id: 1; molecule: 4-deoxy-l-threo-5-hexosulose-uronate ketol- isomerase 1; chain: a, b, c, d, e, f; synonym: 5-keto-4-deoxyuronate isomerase 1, dki isomerase 1; ec: 5.3.1.17; engineered: yes

Organism, scientific name: Enterococcus Faecalis;

1ywk contains a single unique chain 1ywkA (255 residues long) and its homologues 1ywkF, 1ywkD, 1ywkC, 1ywkE, and 1ywkB.

1

2 CHAIN 1YWK A

1

2.1 Q838L9 overview

1

From SwissProt, id Q838L9, 96% identical to 1ywkA:

1

Description: 4-deoxy-L-threo-5-hexosulose-uronate ketol-isomerase 1 (EC 5.3.1.17) (5-keto-4-deoxyuronate isomerase 1) (DKI isomerase 1).

2

2

Organism, scientific name: Enterococcus faecalis (Streptococcus faecalis).

2

Taxonomy: Bacteria; Firmicutes; Lactobacillales; Enterococcaceae; Enterococcus.

4

Catalytic activity: 4-deoxy-L-threo-5-hexosulose uronate = 3-deoxy-D-glycero-2,5-hexodiulosonate.

5

Pathway: Pectin degradation.

5

Similarity: Belongs to the kdul family.

5

About: This Swiss-Prot entry is copyright. It is produced through a collaboration between the Swiss Institute of Bioinformatics and the EMBL outstation - the European Bioinformatics Institute. There are no restrictions on its use as long as its content is in no way modified and this statement is not removed.

6

6

2.2 Multiple sequence alignment for 1ywkA

6

For the chain 1ywkA, the alignment 1ywkA.msf (attached) with 106 sequences was used. The alignment was downloaded from the HSSP database, and fragments shorter than 75% of the query as well as

6

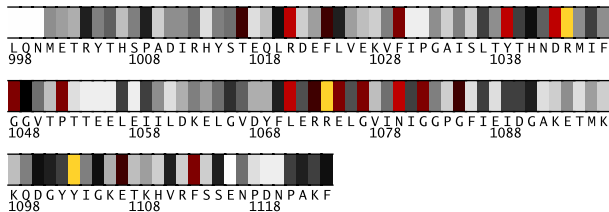


Fig. 1. Residues 998-1124 in 1ywkA colored by their relative importance. (See Appendix, Fig.8, for the coloring scheme.)

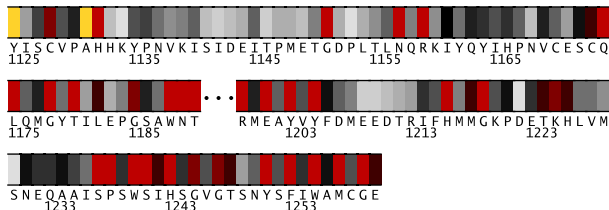


Fig. 2. Residues 1125-1260 in 1ywkA colored by their relative importance. (See Appendix, Fig.8, for the coloring scheme.)

duplicate sequences were removed. It can be found in the attachment to this report, under the name of 1ywkA.msf. Its statistics, from the *alostat* program are the following:

```

Format:                MSF
Number of sequences:  106
Total number of residues: 26529
Smallest:             137
Largest:              255
Average length:      250.3
Alignment length:    255
Average identity:     50%
Most related pair:   99%
Most unrelated pair: 18%
Most distant seq:    50%

```

Furthermore, <1% of residues show as conserved in this alignment.

The alignment consists of 18% prokaryotic sequences. (Descriptions of some sequences were not readily available.) The file containing the sequence descriptions can be found in the attachment, under the name 1ywkA.descr.

2.3 Residue ranking in 1ywkA

The 1ywkA sequence is shown in Figs. 1–2, with each residue colored according to its estimated importance. The full listing of residues in 1ywkA can be found in the file called 1ywkA.ranks_sorted in the attachment.

2.4 Top ranking residues in 1ywkA and their position on the structure

In the following we consider residues ranking among top 25% of residues in the protein. Figure 3 shows residues in 1ywkA colored by their importance: bright red and yellow indicate more conserved/important residues (see Appendix for the coloring scheme). A

Pymol script for producing this figure can be found in the attachment.

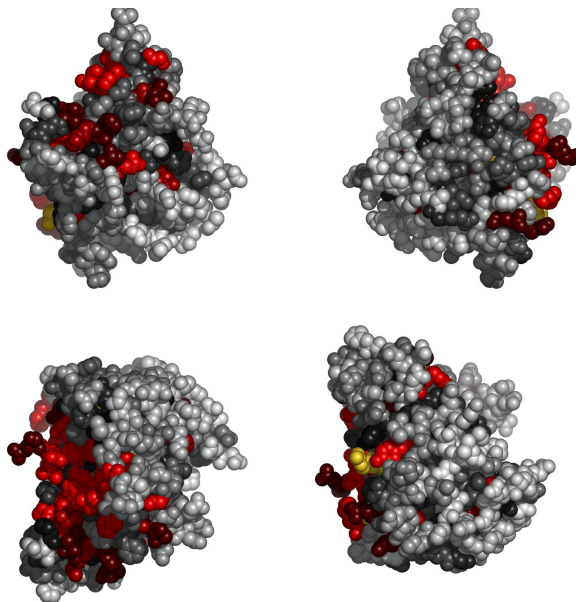


Fig. 3. Residues in 1ywkA, colored by their relative importance. Clockwise: front, back, top and bottom views.

2.4.1 Clustering of residues at 25% coverage. Fig. 4 shows the top 25% of all residues, this time colored according to clusters they belong to. The clusters in Fig.4 are composed of the residues listed in Table 1.

Table 1.		
cluster color	size	member residues
red	59	1017,1021,1024,1030,1039 1043,1044,1048,1049,1071 1073,1074,1075,1077,1103 1107,1125,1128,1131,1132 1151,1157,1159,1161,1173 1174,1175,1178,1180,1182 1188,1189,1190,1199,1201 1203,1205,1216,1218,1219 1224,1225,1226,1237,1238 1240,1241,1242,1243,1245 1247,1248,1251,1253,1255 1256,1257,1259,1260
blue	2	1080,1082
yellow	2	1052,1113

Table 1. Clusters of top ranking residues in 1ywkA.

2.4.2 Overlap with known functional surfaces at 25% coverage. The name of the ligand is composed of the source PDB identifier and the heteroatom name used in that file.

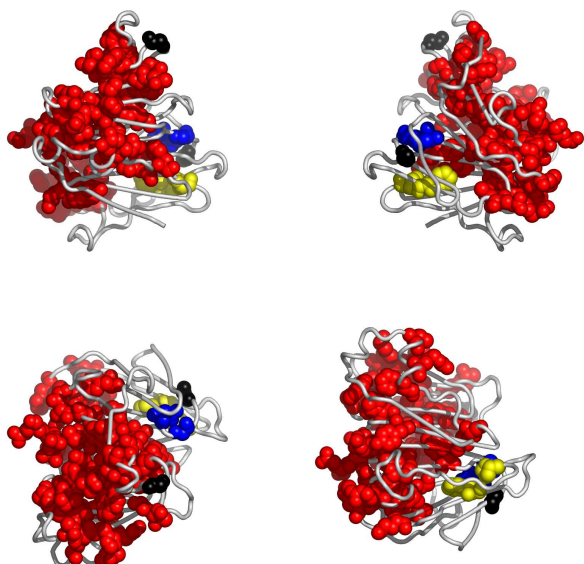


Fig. 4. Residues in 1ywka, colored according to the cluster they belong to: red, followed by blue and yellow are the largest clusters (see Appendix for the coloring scheme). Clockwise: front, back, top and bottom views. The corresponding Pymol script is attached.

Interface with 1ywkaC. Table 2 lists the top 25% of residues at the interface with 1ywkaC. The following table (Table 3) suggests possible disruptive replacements for these residues (see Section 3.6).

Table 2.					
res	type	subst's (%)	cvg	noc/ bb	dist (Å)
1188	W	W(99).	0.11	40/0	3.09
1190	T	T(97) S(1).	0.12	2/0	4.58
1185	G	G(90) N(8).	0.15	21/21	3.40
1225	K	R(91) K(6).G	0.18	31/12	3.00
1247	G	G(89) A(9).	0.18	8/8	3.28
1224	T	T(87) Q(2) M(1) E(6).	0.20	33/20	2.70
1248	T	T(94) I(2) S(1).	0.20	21/16	4.03
1017	T	T(88) N(6)PS. QG	0.23	36/3	3.17
1226	H	H(90)SN V.L(3)	0.24	63/4	2.76

continued in next column

Table 2. continued					
res	type	subst's (%)	cvg	noc/ bb	dist (Å)
		I(1)			

Table 2. The top 25% of residues in 1ywka at the interface with 1ywkaC. (Field names: res: residue number in the PDB entry; type: amino acid type; subst's: substitutions seen in the alignment; with the percentage of each type in the bracket; noc/ bb: number of contacts with the ligand, with the number of contacts realized through backbone atoms given in the bracket; dist: distance of closest approach to the ligand.)

Table 3.		
res	type	disruptive mutations
1188	W	(KE) (TQD) (SNCG) (R)
1190	T	(KR) (FMWH) (Q) (LPI)
1185	G	(R) (E) (K) (FWH)
1225	K	(Y) (FW) (T) (SVA)
1247	G	(KER) (HD) (Q) (FMW)
1224	T	(H) (R) (FW) (K)
1248	T	(R) (K) (H) (FQW)
1017	T	(R) (H) (K) (FW)
1226	H	(E) (T) (QD) (M)

Table 3. List of disruptive mutations for the top 25% of residues in 1ywka, that are at the interface with 1ywkaC.

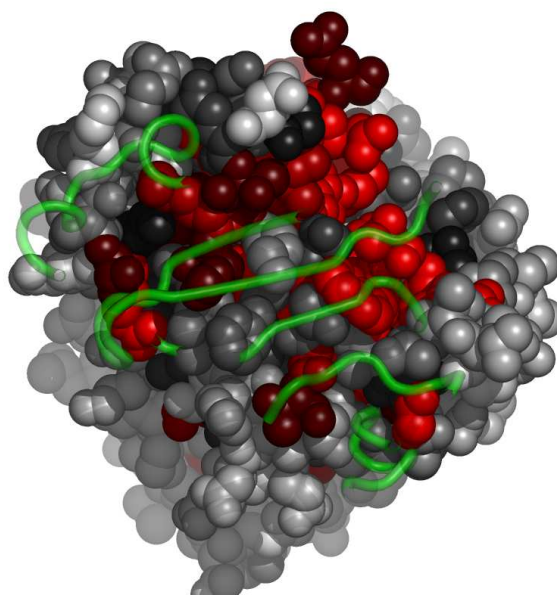


Fig. 5. Residues in 1ywka, at the interface with 1ywkaC, colored by their relative importance. 1ywkaC is shown in backbone representation (See Appendix for the coloring scheme for the protein chain 1ywka.)

Figure 5 shows residues in 1ywka colored by their importance, at the interface with 1ywkaC.

Interface with 1ywkF. By analogy with 1ywkD – 1ywkF interface. Table 4 lists the top 25% of residues at the interface with 1ywkF. The following table (Table 5) suggests possible disruptive replacements for these residues (see Section 3.6).

Table 4.					
res	type	subst's (%)	cvg	noc/ bb	dist (Å)
1131	A	A (100)	0.01	11/10	3.41
1044	R	R (99)	0.02	49/1	3.03
1074	R	R (99)	0.02	13/0	2.41
1132	H	L (1) H (95) Y (2)	0.11	138/30	2.81
1174	Q	Q (99)	0.11	19/5	3.83
1199	R	R (99)	0.11	8/7	2.78
1259	G	G (99)	0.11	8/8	4.01
1240	W	W (98) Y.	0.13	14/0	3.75
1039	Y	Y (97) L (1)	0.14	10/0	2.83
1043	D	D (91) E (7)	0.14	16/0	3.24
1073	R	R (91) E (4) H. C N	0.22	23/0	2.42
1260	E	E (77) D (21)	0.22	68/17	2.58
1173	C	C (90) S (2) A (2) N (2)	0.24	30/19	2.76

Table 4. The top 25% of residues in 1ywkA at the interface with 1ywkF. (Field names: res: residue number in the PDB entry; type: amino acid type; substs: substitutions seen in the alignment; with the percentage of each type in the bracket; noc/bb: number of contacts with the ligand, with the number of contacts realized through backbone atoms given in the bracket; dist: distance of closest approach to the ligand.)

Table 5.		
res	type	disruptive mutations
1131	A	(KYER) (QHD) (N) (FTMW)
1044	R	(TD) (SVCLAPIG) (YE) (FMW)
1074	R	(TD) (SVCLAPIG) (YE) (FMW)
1132	H	(E) (Q) (KM) (TD)
1174	Q	(Y) (FTWH) (SVCAG) (D)
1199	R	(TD) (SVCLAPIG) (YE) (FMW)
1259	G	(KER) (FQMWHD) (NLPI) (Y)
1240	W	(K) (E) (Q) (D)
1039	Y	(K) (Q) (MR) (E)
1043	D	(R) (FW) (H) (VCAG)
1073	R	(T) (D) (YVA) (CG)
1260	E	(FW) (H) (VCAG) (R)
1173	C	(R) (KE) (H) (FW)

continued in next column

Table 5. continued

res	type	disruptive mutations
-----	------	----------------------

Table 5. List of disruptive mutations for the top 25% of residues in 1ywkA, that are at the interface with 1ywkF.

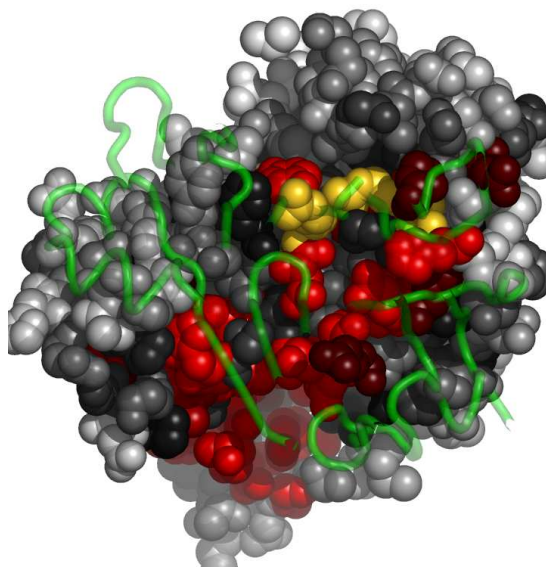


Fig. 6. Residues in 1ywkA, at the interface with 1ywkF, colored by their relative importance. 1ywkF is shown in backbone representation (See Appendix for the coloring scheme for the protein chain 1ywkA.)

Figure 6 shows residues in 1ywkA colored by their importance, at the interface with 1ywkF.

2.4.3 Possible novel functional surfaces at 25% coverage. One group of residues is conserved on the 1ywkA surface, away from (or substantially larger than) other functional sites and interfaces recognizable in PDB entry 1ywk. It is shown in Fig. 7. The right panel shows (in blue) the rest of the larger cluster this surface belongs to.

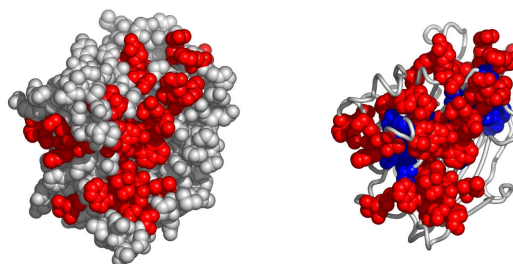


Fig. 7. A possible active surface on the chain 1ywkA. The larger cluster it belongs to is shown in blue.

The residues belonging to this surface "patch" are listed in Table 6, while Table 7 suggests possible disruptive replacements for these residues (see Section 3.6).

Table 6.			
res	type	substitutions(%)	cvg
1044	R	R(99).	0.02
1074	R	R(99).	0.02
1132	H	L(1)H(95)Y(2)	0.11
1151	G	G(99).	0.11
1157	N	N(99).	0.11
1159	R	R(99).	0.11
1174	Q	Q(99).	0.11
1180	T	T(99).	0.11
1188	W	W(99).	0.11
1189	N	N(99).	0.11
1199	R	R(99).	0.11
1201	E	E(99).	0.11
1203	Y	Y(99).	0.11
1241	S	S(99).	0.11
1243	H	H(99).	0.11
1251	Y	Y(99).	0.11
1253	F	F(99).	0.11
1255	W	W(99).	0.11
1257	M	M(99).	0.11
1259	G	G(99).	0.11
1071	L	L(97)FC.	0.12
1190	T	T(97)S(1).	0.12
1021	R	R(97)KC.	0.13
1240	W	W(98)Y.	0.13
1039	Y	Y(97)L(1).	0.14
1043	D	D(91)E(7).	0.14
1225	K	R(91)K(6).G	0.18
1247	G	G(89)A(9).	0.18
1224	T	T(87)Q(2)M(1)E(6).	0.20
1242	I	I(95)V(1)LM.	0.20
1248	T	T(94)I(2)S(1).	0.20
1024	F	Y(12)F(85).M	0.21
1073	R	R(91)E(4)H.CN	0.22
1182	L	L(87)I(4)F(6).	0.22
1260	E	E(77)D(21).	0.22
1017	T	T(88)N(6)PS.QG	0.23
1107	E	G(90)E(5)TS(2)	0.23
1173	C	C(90)S(2)A(2).N(2)	0.24
1226	H	H(90)SNV.L(3)I(1)	0.24
1161	I	I(87)L(5)V(5).	0.25

Table 6. Residues forming surface "patch" in IywKA.

Table 7.		
res	type	disruptive mutations
1044	R	(TD) (SVCLAPIG) (YE) (FMW)
<i>continued in next column</i>		

Table 7. continued		
res	type	disruptive mutations
1074	R	(TD) (SVCLAPIG) (YE) (FMW)
1132	H	(E) (Q) (KM) (TD)
1151	G	(KER) (FQMWH) (NLPI) (Y)
1157	N	(Y) (FTWH) (SVCAG) (ER)
1159	R	(TD) (SVCLAPIG) (YE) (FMW)
1174	Q	(Y) (FTWH) (SVCAG) (D)
1180	T	(KR) (FQMWH) (NLPI) (E)
1188	W	(KE) (TQD) (SNCG) (R)
1189	N	(Y) (FTWH) (SVCAG) (ER)
1199	R	(TD) (SVCLAPIG) (YE) (FMW)
1201	E	(FWH) (VCAG) (YR) (T)
1203	Y	(K) (QM) (NVLAPI) (ER)
1241	S	(KR) (FQMWH) (NLPI) (YE)
1243	H	(E) (TQMD) (SNVCLAPIG) (K)
1251	Y	(K) (QM) (NVLAPI) (ER)
1253	F	(KE) (TQD) (SNCG) (R)
1255	W	(KE) (TQD) (SNCG) (R)
1257	M	(Y) (TH) (SCG) (R)
1259	G	(KER) (FQMWH) (NLPI) (Y)
1071	L	(R) (Y) (TKEH) (S)
1190	T	(KR) (FMWH) (Q) (LPI)
1021	R	(D) (T) (Y) (SEVLAPI)
1240	W	(K) (E) (Q) (D)
1039	Y	(K) (Q) (MR) (E)
1043	D	(R) (FW) (H) (VCAG)
1225	K	(Y) (FW) (T) (SVA)
1247	G	(KER) (HD) (Q) (FMW)
1224	T	(H) (R) (FW) (K)
1242	I	(Y) (R) (H) (T)
1248	T	(R) (K) (H) (FQW)
1024	F	(K) (E) (TQD) (SNCRG)
1073	R	(T) (D) (YVA) (CG)
1182	L	(R) (Y) (T) (H)
1260	E	(FW) (H) (VCAG) (R)
1017	T	(R) (H) (K) (FW)
1107	E	(FWH) (R) (Y) (K)
1173	C	(R) (KE) (H) (FW)
1226	H	(E) (T) (QD) (M)
1161	I	(YR) (H) (T) (KE)

Table 7. Disruptive mutations for the surface patch in IywKA.

3 NOTES ON USING TRACE RESULTS

3.1 Coverage

Trace results are commonly expressed in terms of coverage: the residue is important if its "coverage" is small - that is if it belongs to some small top percentage of residues [100% is all of the residues in a chain], according to trace. The ET results are presented in the form of a table, usually limited to top 25% percent of residues (or to some nearby percentage), sorted by the strength of the presumed evolutionary pressure. (I.e., the smaller the coverage, the stronger the pressure on the residue.) Starting from the top of that list, mutating a

couple of residues should affect the protein somehow, with the exact effects to be determined experimentally.

3.2 Known substitutions

One of the table columns is “substitutions” - other amino acid types seen at the same position in the alignment. These amino acid types may be interchangeable at that position in the protein, so if one wants to affect the protein by a point mutation, they should be avoided. For example if the substitutions are “RVK” and the original protein has an R at that position, it is advisable to try anything, but RVK. Conversely, when looking for substitutions which will *not* affect the protein, one may try replacing R with K, or (perhaps more surprisingly), with V. The percentage of times the substitution appears in the alignment is given in the immediately following bracket. No percentage is given in the cases when it is smaller than 1%. This is meant to be a rough guide - due to rounding errors these percentages often do not add up to 100%.

3.3 Surface

To detect candidates for novel functional interfaces, first we look for residues that are solvent accessible (according to DSSP program) by at least 10\AA^2 , which is roughly the area needed for one water molecule to come in the contact with the residue. Furthermore, we require that these residues form a “cluster” of residues which have neighbor within 5\AA from any of their heavy atoms.

Note, however, that, if our picture of protein evolution is correct, the neighboring residues which *are not* surface accessible might be equally important in maintaining the interaction specificity - they should not be automatically dropped from consideration when choosing the set for mutagenesis. (Especially if they form a cluster with the surface residues.)

3.4 Number of contacts

Another column worth noting is denoted “noc/bb”; it tells the number of contacts heavy atoms of the residue in question make across the interface, as well as how many of them are realized through the backbone atoms (if all or most contacts are through the backbone, mutation presumably won’t have strong impact). Two heavy atoms are considered to be “in contact” if their centers are closer than 5\AA .

3.5 Annotation

If the residue annotation is available (either from the pdb file or from other sources), another column, with the header “annotation” appears. Annotations carried over from PDB are the following: site (indicating existence of related site record in PDB), S-S (disulfide bond forming residue), hb (hydrogen bond forming residue, jb (james bond forming residue), and sb (for salt bridge forming residue).

3.6 Mutation suggestions

Mutation suggestions are completely heuristic and based on complementarity with the substitutions found in the alignment. Note that they are meant to be **disruptive** to the interaction of the protein with its ligand. The attempt is made to complement the following properties: small [AVGSTC], medium [LPNQDEMIK], large [WFYHR], hydrophobic [LPVAMWFI], polar [GTCY]; positively [KRR], or negatively [DE] charged, aromatic [WFYH], long aliphatic chain [EKRRM], OH-group possession [SDETY], and NH2 group possession [NQRK]. The suggestions are listed according to how different they appear to be from the original amino

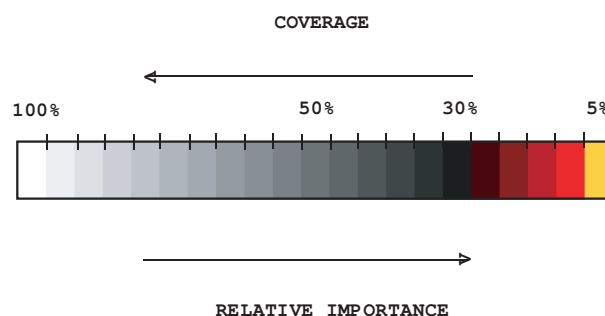


Fig. 8. Coloring scheme used to color residues by their relative importance.

acid, and they are grouped in round brackets if they appear equally disruptive. From left to right, each bracketed group of amino acid types resembles more strongly the original (i.e. is, presumably, less disruptive) These suggestions are tentative - they might prove disruptive to the fold rather than to the interaction. Many researcher will choose, however, the straightforward alanine mutations, especially in the beginning stages of their investigation.

4 APPENDIX

4.1 File formats

Files with extension “ranks_sorted” are the actual trace results. The fields in the table in this file:

- `alignment#` number of the position in the alignment
- `residue#` residue number in the PDB file
- `type` amino acid type
- `rank` rank of the position according to older version of ET
- `variability` has two subfields:
 1. number of different amino acids appearing in in this column of the alignment
 2. their type
- `rho` ET score - the smaller this value, the lesser variability of this position across the branches of the tree (and, presumably, the greater the importance for the protein)
- `cvg` coverage - percentage of the residues on the structure which have this rho or smaller
- `gaps` percentage of gaps in this column

4.2 Color schemes used

The following color scheme is used in figures with residues colored by cluster size: black is a single-residue cluster; clusters composed of more than one residue colored according to this hierarchy (ordered by descending size): red, blue, yellow, green, purple, azure, turquoise, brown, coral, magenta, LightSalmon, SkyBlue, violet, gold, bisque, LightSlateBlue, orchid, RosyBrown, MediumAquamarine,

DarkOliveGreen, CornflowerBlue, grey55, burlywood, LimeGreen, tan, DarkOrange, DeepPink, maroon, BlanchedAlmond.

The colors used to distinguish the residues by the estimated evolutionary pressure they experience can be seen in Fig. 8.

4.3 Credits

4.3.1 Alistat *alistat* reads a multiple sequence alignment from the file and shows a number of simple statistics about it. These statistics include the format, the number of sequences, the total number of residues, the average and range of the sequence lengths, and the alignment length (e.g. including gap characters). Also shown are some percent identities. A percent pairwise alignment identity is defined as $(\text{idents} / \text{MIN}(\text{len1}, \text{len2}))$ where *idents* is the number of exact identities and *len1*, *len2* are the unaligned lengths of the two sequences. The "average percent identity", "most related pair", and "most unrelated pair" of the alignment are the average, maximum, and minimum of all $(N)(N-1)/2$ pairs, respectively. The "most distant seq" is calculated by finding the maximum pairwise identity (best relative) for all *N* sequences, then finding the minimum of these *N* numbers (hence, the most outlying sequence). *alistat* is copyrighted by HHMI/Washington University School of Medicine, 1992-2001, and freely distributed under the GNU General Public License.

4.3.2 CE To map ligand binding sites from different source structures, *report_maker* uses the CE program: <http://cl.sdsc.edu/>. Shindyalov IN, Bourne PE (1998) "Protein structure alignment by incremental combinatorial extension (CE) of the optimal path". *Protein Engineering* 11(9) 739-747.

4.3.3 DSSP In this work a residue is considered solvent accessible if the DSSP program finds it exposed to water by at least 10\AA^2 , which is roughly the area needed for one water molecule to come in the contact with the residue. DSSP is copyrighted by W. Kabsch, C. Sander and MPI-MF, 1983, 1985, 1988, 1994 1995, CMBI version by Elmar.Krieger@cmbi.kun.nl November 18,2002,

<http://www.cmbi.kun.nl/gv/dssp/descrip.html>.

4.3.4 HSSP Whenever available, *report_maker* uses HSSP alignment as a starting point for the analysis (sequences shorter than 75% of the query are taken out, however); R. Schneider, A. de Daruvar, and C. Sander. "The HSSP database of protein structure-sequence alignments." *Nucleic Acids Res.*, 25:226-230, 1997.

<http://swift.cmbi.kun.nl/swift/hssp/>

4.3.5 LaTeX The text for this report was processed using \LaTeX ; Leslie Lamport, "LaTeX: A Document Preparation System Addison-Wesley," Reading, Mass. (1986).

4.3.6 Muscle When making alignments "from scratch", *report_maker* uses Muscle alignment program: Edgar, Robert C. (2004), "MUSCLE: multiple sequence alignment with high accuracy and high throughput." *Nucleic Acids Research* 32(5), 1792-97.

<http://www.drive5.com/muscle/>

4.3.7 Pymol The figures in this report were produced using Pymol. The scripts can be found in the attachment. Pymol

is an open-source application copyrighted by DeLano Scientific LLC (2005). For more information about Pymol see <http://pymol.sourceforge.net/>. (Note for Windows users: the attached package needs to be unzipped for Pymol to read the scripts and launch the viewer.)

4.4 Note about ET Viewer

Dan Morgan from the Lichtarge lab has developed a visualization tool specifically for viewing trace results. If you are interested, please visit:

<http://mammoth.bcm.tmc.edu/traceview/>

The viewer is self-unpacking and self-installing. Input files to be used with ETV (extension .etvx) can be found in the attachment to the main report.

4.5 Citing this work

The method used to rank residues and make predictions in this report can be found in Mihalek, I., I. Reš, O. Lichtarge. (2004). "A Family of Evolution-Entropy Hybrid Methods for Ranking of Protein Residues by Importance" *J. Mol. Bio.* **336**: 1265-82. For the original version of ET see O. Lichtarge, H.Bourne and F. Cohen (1996). "An Evolutionary Trace Method Defines Binding Surfaces Common to Protein Families" *J. Mol. Bio.* **257**: 342-358.

report_maker itself is described in Mihalek I., I. Res and O. Lichtarge (2006). "Evolutionary Trace Report Maker: a new type of service for comparative analysis of proteins." *Bioinformatics* **22**:1656-7.

4.6 About report_maker

report_maker was written in 2006 by Ivana Mihalek. The 1D ranking visualization program was written by Ivica Reš. *report_maker* is copyrighted by Lichtarge Lab, Baylor College of Medicine, Houston.

4.7 Attachments

The following files should accompany this report:

- 1ywkA.complex.pdb - coordinates of 1ywkA with all of its interacting partners
- 1ywkA.etvx - ET viewer input file for 1ywkA
- 1ywkA.cluster_report.summary - Cluster report summary for 1ywkA
- 1ywkA.ranks - Ranks file in sequence order for 1ywkA
- 1ywkA.clusters - Cluster descriptions for 1ywkA
- 1ywkA.msf - the multiple sequence alignment used for the chain 1ywkA
- 1ywkA.descr - description of sequences used in 1ywkA msf
- 1ywkA.ranks_sorted - full listing of residues and their ranking for 1ywkA
- 1ywkA.1ywkC.if.pml - Pymol script for Figure 5
- 1ywkA.cbvcg - used by other 1ywkA - related pymol scripts
- 1ywkA.1ywkF.if.pml - Pymol script for Figure 6