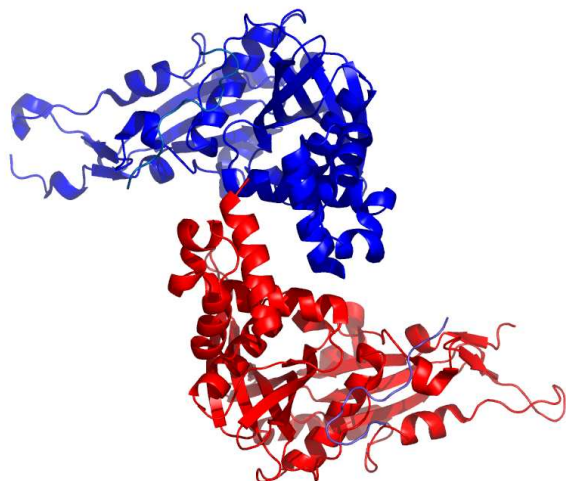


# 2p0w

Evolutionary trace report by **report\_maker**

December 20, 2009



## CONTENTS

### 1 Introduction

### 2 Chain 2p0wA

- 2.1 O14929 overview
- 2.2 Multiple sequence alignment for 2p0wA
- 2.3 Residue ranking in 2p0wA
- 2.4 Top ranking residues in 2p0wA and their position on the structure
  - 2.4.1 Clustering of residues at 25% coverage.
  - 2.4.2 Overlap with known functional surfaces at 25% coverage.
  - 2.4.3 Possible novel functional surfaces at 25% coverage.

### 3 Notes on using trace results

- 3.1 Coverage
- 3.2 Known substitutions
- 3.3 Surface
- 3.4 Number of contacts
- 3.5 Annotation
- 3.6 Mutation suggestions

### 4 Appendix

- 4.1 File formats
- 4.2 Color schemes used
- 4.3 Credits

4.3.1	<b>Alistat</b>	11
4.3.2	<b>CE</b>	11
4.3.3	<b>DSSP</b>	11
4.3.4	<b>HSSP</b>	11
4.3.5	<b>LaTex</b>	11
4.3.6	<b>Muscle</b>	11
4.3.7	<b>Pymol</b>	11
4.4	Note about ET Viewer	12
4.5	Citing this work	12
4.6	About report_maker	12
4.7	Attachments	12

## 1 INTRODUCTION

From the original Protein Data Bank entry (PDB id 2p0w):

**Title:** Human histone acetyltransferase 1 (hat1)

**Compound:** Mol id: 1; molecule: histone acetyltransferase type b catalytic subunit; chain: a, b; fragment: residues 20-341; ec: 2.3.1.48; engineered: yes; mol id: 2; molecule: histone peptide h4; chain: p, q; engineered: yes

**Organism, scientific name:** Homo Sapiens;

2p0w contains a single unique chain 2p0wA (319 residues long) and its homologue 2p0wB. Chains 2p0wP and 2p0wQ are too short to permit statistically significant analysis, and were treated as a peptide ligands.

## 2 CHAIN 2P0WA

### 2.1 O14929 overview

From SwissProt, id O14929, 100% identical to 2p0wA:

**Description:** Histone acetyltransferase type B catalytic subunit (EC 2.3.1.48).

**Organism, scientific name:** Homo sapiens (Human).

**Taxonomy:** Eukaryota; Metazoa; Chordata; Craniata; Vertebrata; Euteleostomi; Mammalia; Eutheria; Euarchontoglires; Primates; Catarrhini; Hominidae; Homo.

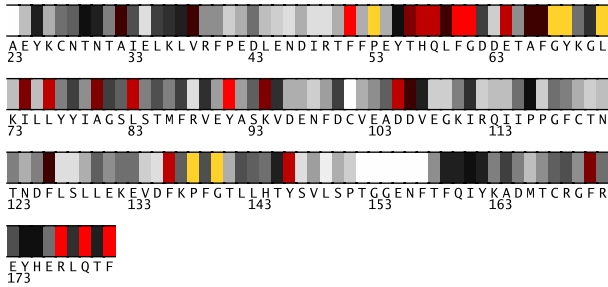
**Function:** May play a role in telomeric silencing. Acetylates soluble but not nucleosomal H4 at Lys-5 and Lys-12 and acetylates histone H2A at Lys-5. HAT1 has intrinsic substrate specificity that modifies lysine in recognition sequence G-X-G-K-X-G.

**Catalytic activity:** Acetyl-CoA + histone = CoA + acetylhistone.

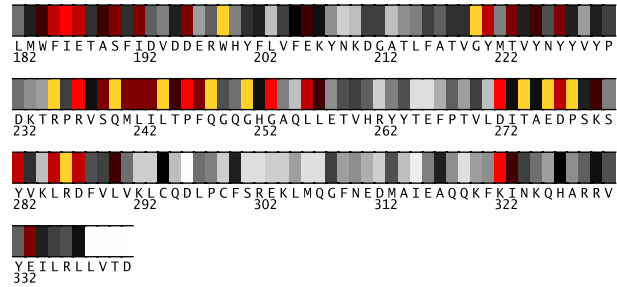
**Subunit:** Heteromer of HAT1 and p46/HAT2 subunits.

**Subcellular location:** Nuclear in S-phase cells and cytoplasmic.

**About:** This Swiss-Prot entry is copyright. It is produced through a collaboration between the Swiss Institute of Bioinformatics and the EMBL outstation - the European Bioinformatics Institute. There are no restrictions on its use as long as its content is in no way modified and this statement is not removed.



**Fig. 1.** Residues 23-181 in 2p0wA colored by their relative importance. (See Appendix, Fig.14, for the coloring scheme.)



**Fig. 2.** Residues 182-341 in 2p0wA colored by their relative importance. (See Appendix, Fig.14, for the coloring scheme.)

## 2.2 Multiple sequence alignment for 2p0wA

For the chain 2p0wA, the alignment 2p0wA.msf (attached) with 47 sequences was used. The alignment was downloaded from the HSSP database, and fragments shorter than 75% of the query as well as duplicate sequences were removed. It can be found in the attachment to this report, under the name of 2p0wA.msf. Its statistics, from the *alistat* program are the following:

```

Format:                MSF
Number of sequences:   47
Total number of residues: 14028
Smallest:              162
Largest:               319
Average length:        298.5
Alignment length:      319
Average identity:       35%
Most related pair:     98%
Most unrelated pair:   19%
Most distant seq:      32%
  
```

Furthermore, <1% of residues show as conserved in this alignment.

The alignment consists of 21% eukaryotic ( 10% vertebrata, 2% arthropoda) sequences. (Descriptions of some sequences were not readily available.) The file containing the sequence descriptions can be found in the attachment, under the name 2p0wA.descr.

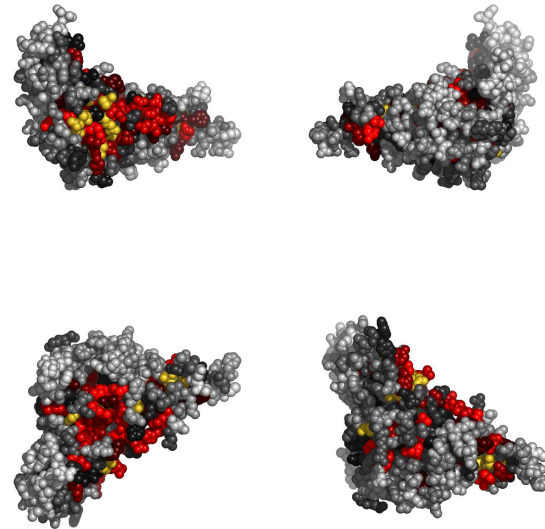
## 2.3 Residue ranking in 2p0wA

The 2p0wA sequence is shown in Figs. 1–2, with each residue colored according to its estimated importance. The full listing of residues in 2p0wA can be found in the file called 2p0wA.ranks.sorted in the attachment.

## 2.4 Top ranking residues in 2p0wA and their position on the structure

In the following we consider residues ranking among top 25% of residues in the protein. Figure 3 shows residues in 2p0wA colored by their importance: bright red and yellow indicate more conserved/important residues (see Appendix for the coloring scheme). A Pymol script for producing this figure can be found in the attachment.

**2.4.1 Clustering of residues at 25% coverage.** Fig. 4 shows the top 25% of all residues, this time colored according to clusters they

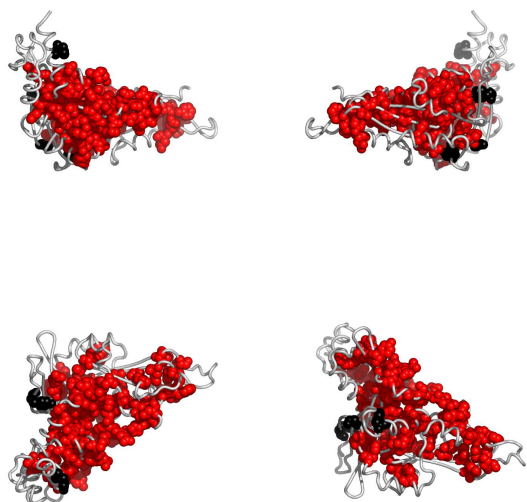


**Fig. 3.** Residues in 2p0wA, colored by their relative importance. Clockwise: front, back, top and bottom views.

belong to. The clusters in Fig.4 are composed of the residues listed in Table 1.

Table 1.		
cluster color	size	member residues
red	77	32, 38, 51, 53, 56, 57, 58, 59, 60 61, 64, 66, 67, 68, 69, 72, 74, 76 80, 83, 91, 94, 105, 106, 126, 136 138, 177, 179, 181, 184, 185, 186 187, 189, 190, 192, 196, 199, 205 206, 220, 221, 223, 225, 227, 235 237, 239, 240, 241, 242, 243, 244 245, 246, 247, 248, 251, 253, 256 257, 272, 274, 276, 277, 278, 280 282, 285, 286, 287, 290, 294, 322

*continued in next column*



**Fig. 4.** Residues in 2p0wA, colored according to the cluster they belong to: red, followed by blue and yellow are the largest clusters (see Appendix for the coloring scheme). Clockwise: front, back, top and bottom views. The corresponding Pymol script is attached.

Table 1. continued		
cluster color	size	member residues
		323, 327

**Table 1.** Clusters of top ranking residues in 2p0wA.

#### 2.4.2 Overlap with known functional surfaces at 25% coverage.

The name of the ligand is composed of the source PDB identifier and the heteroatom name used in that file.

**Acetate ion binding site.** Table 2 lists the top 25% of residues at the interface with 2p0wACT805 (acetate ion). The following table (Table 3) suggests possible disruptive replacements for these residues (see Section 3.6).

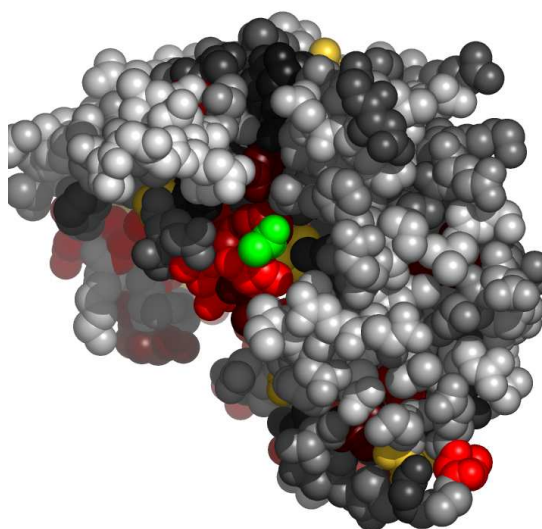
Table 2.					
res	type	subst's (%)	cvg	noc/ bb	dist (Å)
246	P	P (80)	0.08	5/1	3.83
		. (6)			
		I (2)			
		Q (8)			
247	F	H (2)	0.19	7/0	3.63
		Y (31)			
		H (12)			
		F (48)			
		. (6)			

**Table 2.** The top 25% of residues in 2p0wA at the interface with acetate ion. (Field names: res: residue number in the PDB entry; type: amino acid

type; substs: substitutions seen in the alignment; with the percentage of each type in the bracket; noc/bb: number of contacts with the ligand, with the number of contacts realized through backbone atoms given in the bracket; dist: distance of closest approach to the ligand.)

Table 3.		
res	type	disruptive mutations
246	P	(Y) (T) (R) (H)
247	F	(KE) (Q) (D) (T)

**Table 3.** List of disruptive mutations for the top 25% of residues in 2p0wA, that are at the interface with acetate ion.



**Fig. 5.** Residues in 2p0wA, at the interface with acetate ion, colored by their relative importance. The ligand (acetate ion) is colored green. Atoms further than 30 Å away from the geometric center of the ligand, as well as on the line of sight to the ligand were removed. (See Appendix for the coloring scheme for the protein chain 2p0wA.)

Figure 5 shows residues in 2p0wA colored by their importance, at the interface with 2p0wACT805.

**Acetamide binding site.** Table 4 lists the top 25% of residues at the interface with 2p0wACM803 (acetamide). The following table (Table 5) suggests possible disruptive replacements for these residues (see Section 3.6).

Table 4.					
res	type	subst's (%)	cvg	noc/ bb	dist (Å)
140	G	G (93)	0.04	13/13	2.92
		D (2)			

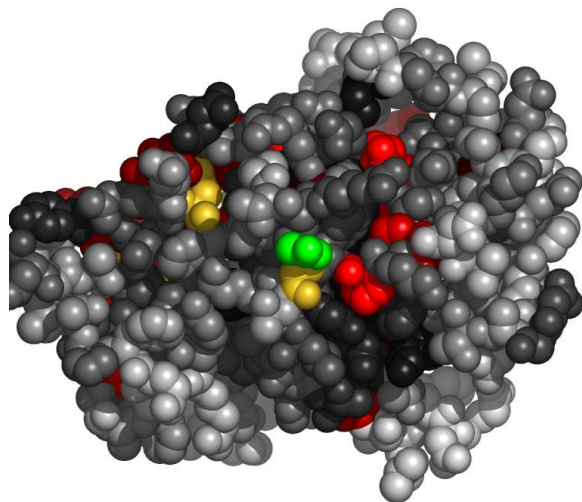
*continued in next column*

res	type	subst's (%)	cvg	noc/ bb	dist (Å)
138	P	A(4) P(91) E(4) H(2) R(2)	0.05	1/1	4.57

**Table 4.** The top 25% of residues in 2p0wA at the interface with acetamide. (Field names: res: residue number in the PDB entry; type: amino acid type; substs: substitutions seen in the alignment; with the percentage of each type in the bracket; noc/bb: number of contacts with the ligand, with the number of contacts realized through backbone atoms given in the bracket; dist: distance of closest approach to the ligand. )

res	type	disruptive mutations
140	G	(R) (K) (H) (E)
138	P	(Y) (T) (R) (CG)

**Table 5.** List of disruptive mutations for the top 25% of residues in 2p0wA, that are at the interface with acetamide.



**Fig. 6.** Residues in 2p0wA, at the interface with acetamide, colored by their relative importance. The ligand (acetamide) is colored green. Atoms further than 30Å away from the geometric center of the ligand, as well as on the line of sight to the ligand were removed. (See Appendix for the coloring scheme for the protein chain 2p0wA.)

Figure 6 shows residues in 2p0wA colored by their importance, at the interface with 2p0wACM803.

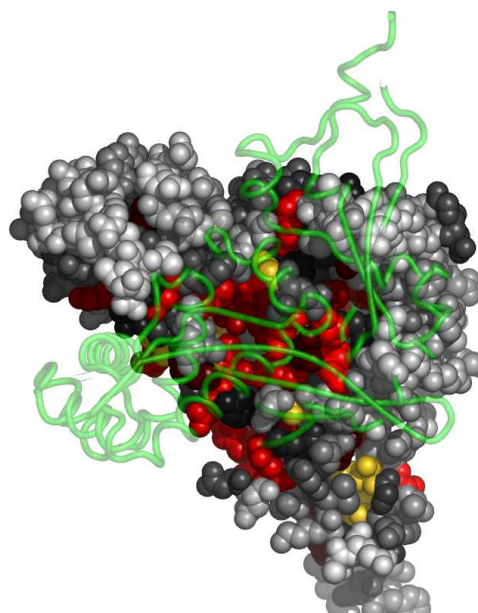
**Interface with 2p0wB.** Table 6 lists the top 25% of residues at the interface with 2p0wB. The following table (Table 7) suggests possible disruptive replacements for these residues (see Section 3.6).

res	type	subst's (%)	cvg	noc/ bb	dist (Å)
333	E	D(2) E(80) (8) P(2) L(2) Q(4)	0.16	10/1	3.77

**Table 6.** The top 25% of residues in 2p0wA at the interface with 2p0wB. (Field names: res: residue number in the PDB entry; type: amino acid type; substs: substitutions seen in the alignment; with the percentage of each type in the bracket; noc/bb: number of contacts with the ligand, with the number of contacts realized through backbone atoms given in the bracket; dist: distance of closest approach to the ligand. )

res	type	disruptive mutations
333	E	(H) (FW) (Y) (R)

**Table 7.** List of disruptive mutations for the top 25% of residues in 2p0wA, that are at the interface with 2p0wB.



**Fig. 7.** Residues in 2p0wA, at the interface with 2p0wB, colored by their relative importance. 2p0wB is shown in backbone representation (See Appendix for the coloring scheme for the protein chain 2p0wA.)

Figure 7 shows residues in 2p0wA colored by their importance, at the interface with 2p0wB.

**Chloride ion binding site.** Table 8 lists the top 25% of residues at the interface with 2p0wCL806 (chloride ion). The following table (Table 9) suggests possible disruptive replacements for these residues (see Section 3.6).

Table 8.					
res	type	subst's (%)	cvg	noc/ bb	dist (Å)
274	T	T(93) .(6)	0.02	4/2	4.18
286	R	R(93) .(6)	0.02	3/0	3.44
278	P	P(91) .(6)	0.03	2/0	4.32
327	H	A(2) Q(61) .(6) R(2) S(2) K(2) H(21) T(4)	0.25	3/0	3.68

**Table 8.** The top 25% of residues in 2p0wA at the interface with chloride ion. (Field names: res: residue number in the PDB entry; type: amino acid type; substs: substitutions seen in the alignment; with the percentage of each type in the bracket; noc/bb: number of contacts with the ligand, with the number of contacts realized through backbone atoms given in the bracket; dist: distance of closest approach to the ligand.)

Table 9.		
res	type	disruptive mutations
274	T	(KR) (FQW) (NLPI) (E)
286	R	(TD) (SVCLAPIG) (YE) (FMW)
278	P	(Y) (R) (H) (T)
327	H	(E) (D) (M) (T)

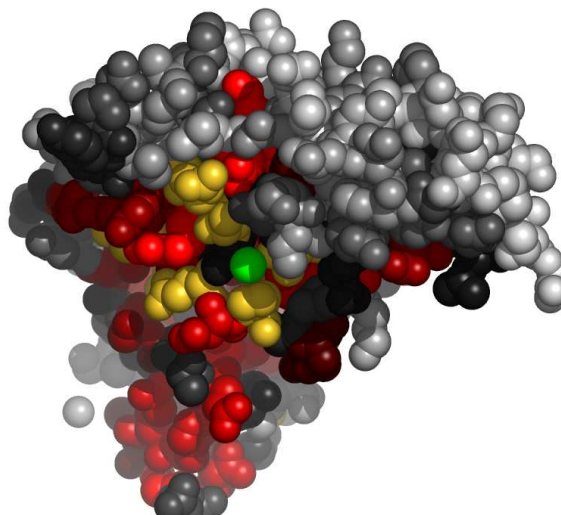
**Table 9.** List of disruptive mutations for the top 25% of residues in 2p0wA, that are at the interface with chloride ion.

Figure 8 shows residues in 2p0wA colored by their importance, at the interface with 2p0wCL806.

**Acetyl coenzyme \*a binding site.** Table 10 lists the top 25% of residues at the interface with 2p0wAACO401 (acetyl coenzyme \*a). The following table (Table 11) suggests possible disruptive replacements for these residues (see Section 3.6).

Table 10.					
res	type	subst's (%)	cvg	noc/ bb	dist (Å)
240	Q	Q(93) .(6)	0.02	6/6	4.35
276	E	E(93)	0.02	3/3	4.72

*continued in next column*



**Fig. 8.** Residues in 2p0wA, at the interface with chloride ion, colored by their relative importance. The ligand (chloride ion) is colored green. Atoms further than 30Å away from the geometric center of the ligand, as well as on the line of sight to the ligand were removed. (See Appendix for the coloring scheme for the protein chain 2p0wA.)

Table 10. continued					
res	type	subst's (%)	cvg	noc/ bb	dist (Å)
278	P	.(6) P(91) .(6) A(2)	0.03	5/4	3.58
251	G	R(2) G(91) .(6)	0.04	16/16	2.90
248	Q	Q(87) .(6) R(4) H(2)	0.05	35/8	3.56
186	I	I(89) V(10)	0.06	12/0	3.78
253	G	G(76) A(17) .(6)	0.09	21/21	2.80
285	L	L(78) .(6) V(2) M(4) T(2) I(6)	0.10	42/16	3.59
185	F	F(78) Y(14) L(4)	0.12	8/6	3.47

*continued in next column*

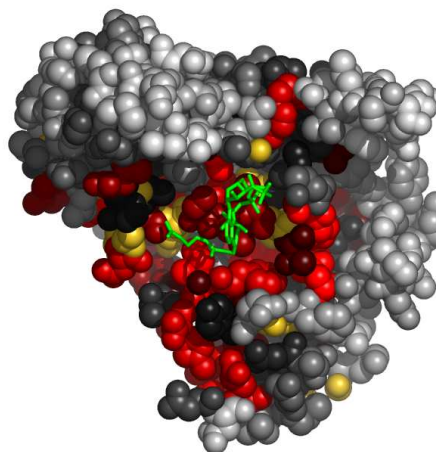


Table 10. continued					
res	type	subst's (%)	cvg	noc/ bb	dist (Å)
277	D	A(2)	0.12	2/2	4.51
		D(80)			
		.(6)			
		S(4)			
		V(2)			
282	Y	Q(2)	0.14	26/4	3.38
		E(4)			
		F(65)			
		.(6)			
		Y(17)			
239	S	V(4)	0.16	8/8	3.62
		I(2)			
		L(4)			
		S(72)			
		A(19)			
243	I	.(6)	0.16	35/14	2.85
		L(2)			
		I(68)			
		.(6)			
		F(4)			
241	M	V(14)	0.17	35/26	2.92
		L(6)			
		F(31)			
		M(38)			
		.(6)			
242	L	I(17)	0.18	17/8	3.44
		Y(6)			
		L(70)			
		V(14)			
		.(6)			
247	F	M(2)	0.19	1/1	4.49
		I(6)			
		Y(31)			
		H(12)			
		F(48)			
280	K	.(6)	0.20	1/0	4.95
		E(65)			
		.(6)			
		P(2)			
		D(17)			
		K(6)			
		R(2)			

**Table 10.** The top 25% of residues in 2p0wA at the interface with acetyl coenzyme \*a.(Field names: res: residue number in the PDB entry; type: amino acid type; subst's: substitutions seen in the alignment; with the percentage of each type in the bracket; noc/ bb: number of contacts with the ligand, with the number of contacts realized through backbone atoms given in the bracket; dist: distance of closest approach to the ligand. )

Table 11.		
res	type	disruptive mutations
240	Q	(Y)(FTWH)(SVCAG)(D)
276	E	(FWH)(VCAG)(YR)(T)
278	P	(Y)(R)(H)(T)
251	G	(E)(D)(KM)(FW)
248	Q	(TY)(SFVCAWG)(HD)(ELPI)
186	I	(YR)(H)(TKE)(SQCDG)
253	G	(KER)(HD)(Q)(FMW)
285	L	(R)(Y)(H)(T)
185	F	(K)(E)(Q)(DR)
277	D	(R)(H)(FW)(Y)
282	Y	(K)(Q)(R)(E)
239	S	(R)(K)(H)(Q)
243	I	(R)(Y)(T)(H)
241	M	(T)(Y)(R)(H)
242	L	(Y)(R)(H)(T)
247	F	(KE)(Q)(D)(T)
280	K	(Y)(FW)(T)(CG)

**Table 11.** List of disruptive mutations for the top 25% of residues in 2p0wA, that are at the interface with acetyl coenzyme \*a.



**Fig. 9.** Residues in 2p0wA, at the interface with acetyl coenzyme \*a, colored by their relative importance. The ligand (acetyl coenzyme \*a) is colored green. Atoms further than 30Å away from the geometric center of the ligand, as well as on the line of sight to the ligand were removed. (See Appendix for the coloring scheme for the protein chain 2p0wA.)

Figure 9 shows residues in 2p0wA colored by their importance, at the interface with 2p0wAACO401.

**Interface with the peptide 2p0wP.** Table 12 lists the top 25% of residues at the interface with 2p0wP. The following table (Table

13) suggests possible disruptive replacements for these residues (see Section 3.6).

Table 12.					
res	type	subst's (%)	cvg	noc/ bb	dist (Å)
199	W	W(97) . (2)	0.00	24/0	3.57
240	Q	Q(93) . (6)	0.02	13/0	3.04
276	E	E(93) . (6)	0.02	58/4	2.79
186	I	I(89) V(10)	0.06	6/0	3.26
237	R	R(89) . (6) Q(2) K(2)	0.07	14/0	2.78
187	E	E(70) D(29)	0.10	31/3	2.79
57	H	Y(40) H(55) . (2) E(2)	0.11	52/0	2.83
58	Q	P(27) Q(63) S(4) . (2) A(2)	0.12	25/0	3.06
64	E	E(87) Q(2) . (2) N(4) G(2) K(2)	0.12	24/0	2.73
277	D	D(80) . (6) S(4) V(2) Q(2) E(4)	0.12	9/6	3.44
196	D	E(17) D(74) . (2) N(2) P(4)	0.15	8/0	3.77
239	S	S(72) A(19) . (6) L(2)	0.16	15/4	3.12
56	T	T(53) A(14) S(17)	0.18	1/1	4.80

continued in next column

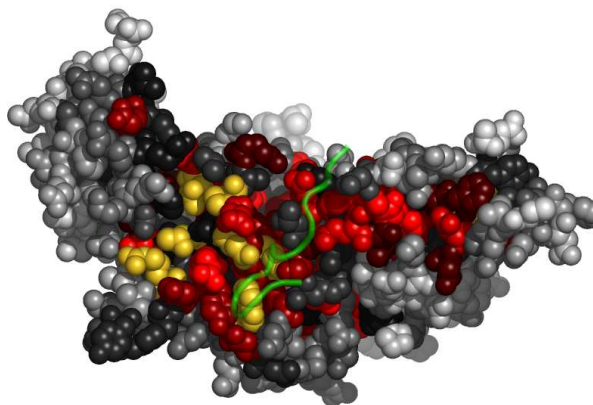
Table 12. continued					
res	type	subst's (%)	cvg	noc/ bb	dist (Å)
192	I	V(12) . (2) L(10) V(8) I(70) P(4) T(6)	0.18	6/1	3.88
190	S	S(74) T(14) R(2) Q(8)	0.19	60/22	2.89
225	Y	Y(87) . (6) F(4) V(2)	0.20	36/0	3.35
189	A	A(48) G(31) S(4) V(4) C(4) F(6)	0.22	21/20	3.73

**Table 12.** The top 25% of residues in 2p0wA at the interface with 2p0wP. (Field names: res: residue number in the PDB entry; type: amino acid type; subst's: substitutions seen in the alignment; with the percentage of each type in the bracket; noc/bb: number of contacts with the ligand, with the number of contacts realized through backbone atoms given in the bracket; dist: distance of closest approach to the ligand.)

Table 13.		
res	type	disruptive mutations
199	W	(KE) (TQD) (SNCG) (R)
240	Q	(Y) (FTWH) (SVCAG) (D)
276	E	(FWH) (VCAG) (YR) (T)
186	I	(YR) (H) (TKE) (SQCDG)
237	R	(T) (YD) (SVCAG) (FLWPI)
187	E	(FWH) (R) (YVCAG) (T)
57	H	(EQM) (TVA) (NKCLPDIG) (S)
58	Q	(Y) (H) (FW) (T)
64	E	(FW) (H) (Y) (VA)
277	D	(R) (H) (FW) (Y)
196	D	(R) (H) (FW) (Y)
239	S	(R) (K) (H) (Q)
56	T	(KR) (Q) (H) (M)
192	I	(R) (Y) (H) (K)
190	S	(FW) (KHR) (M) (Y)
225	Y	(K) (Q) (EM) (NR)
189	A	(K) (ER) (Y) (Q)

**Table 13.** List of disruptive mutations for the top 25% of residues in 2p0wA, that are at the interface with 2p0wP.

Figure 10 shows residues in 2p0wA colored by their importance, at the interface with 2p0wP.



**Fig. 10.** Residues in 2p0wA, at the interface with 2p0wP, colored by their relative importance. 2p0wP is shown in backbone representation (See Appendix for the coloring scheme for the protein chain 2p0wA.)

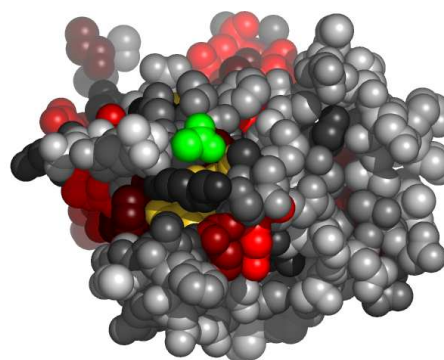
**Acetamide binding site.** By analogy with 2p0wB – 2p0wACM804 interface. Table 14 lists the top 25% of residues at the interface with 2p0wACM804 (acetamide). The following table (Table 15) suggests possible disruptive replacements for these residues (see Section 3.6).

res	type	subst's (%)	cvg	noc/ bb	dist (Å)
69	Y	Y(97) .(2)	0.01	5/5	3.76
72	L	L(91) F(2) C(4) .(2)	0.05	7/5	3.04

**Table 14.** The top 25% of residues in 2p0wA at the interface with acetamide.(Field names: res: residue number in the PDB entry; type: amino acid type; substs: substitutions seen in the alignment; with the percentage of each type in the bracket; noc/bb: number of contacts with the ligand, with the number of contacts realized through backbone atoms given in the bracket; dist: distance of closest approach to the ligand. )

res	type	disruptive mutations
69	Y	(K)(QM)(NVLAPI)(ER)
72	L	(R)(Y)(TKEH)(S)

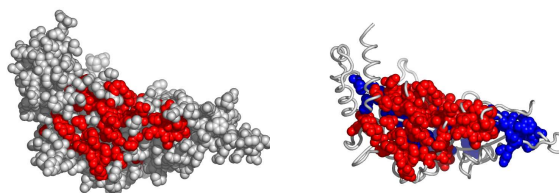
**Table 15.** List of disruptive mutations for the top 25% of residues in 2p0wA, that are at the interface with acetamide.



**Fig. 11.** Residues in 2p0wA, at the interface with acetamide, colored by their relative importance. The ligand (acetamide) is colored green. Atoms further than 30Å away from the geometric center of the ligand, as well as on the line of sight to the ligand were removed. (See Appendix for the coloring scheme for the protein chain 2p0wA.)

Figure 11 shows residues in 2p0wA colored by their importance, at the interface with 2p0wACM804.

**2.4.3 Possible novel functional surfaces at 25% coverage.** One group of residues is conserved on the 2p0wA surface, away from (or substantially larger than) other functional sites and interfaces recognizable in PDB entry 2p0w. It is shown in Fig. 12. The right panel shows (in blue) the rest of the larger cluster this surface belongs to.



**Fig. 12.** A possible active surface on the chain 2p0wA. The larger cluster it belongs to is shown in blue.

The residues belonging to this surface "patch" are listed in Table 16, while Table 17 suggests possible disruptive replacements for these residues (see Section 3.6).



Table 16.			
res	type	substitutions(%)	cvg
199	W	W(97).(2)	0.00
240	Q	Q(93).(6)	0.02
274	T	T(93).(6)	0.02
276	E	E(93).(6)	0.02
286	R	R(93).(6)	0.02
235	R	R(93).(6)	0.03
278	P	P(91).(6)A(2)	0.03
53	P	P(95).(2)A(2)	0.04
251	G	R(2)G(91).(6)	0.04
248	Q	Q(87).(6)R(4)	0.05
		H(2)	
177	R	R(85)K(4)F(4)	0.06
		H(2)A(2)C(2)	
186	I	I(89)V(10)	0.06
51	F	F(87).(2)Y(6)	0.07
		H(2)C(2)	
237	R	R(89).(6)Q(2)	0.07
		K(2)	
322	K	K(82).(6)L(6)	0.07
		E(4)	
246	P	P(80).(6)I(2)	0.08
		Q(8)H(2)	
272	D	E(34)D(55).(6)	0.08
		Q(4)	
60	F	F(85)Y(12).(2)	0.09
61	G	G(87)N(4).(2)	0.09
		R(6)	
179	Q	Q(85)E(10)R(2)	0.09
		T(2)	
253	G	G(76)A(17).(6)	0.09
187	E	E(70)D(29)	0.10
285	L	L(78).(6)V(2)	0.10
		M(4)T(2)I(6)	
57	H	Y(40)H(55).(2)	0.11
		E(2)	
287	D	D(74)N(12).(6)	0.11
		S(6)	
58	Q	P(27)Q(63)S(4)	0.12
		.(2)A(2)	
64	E	E(87)Q(2).(2)	0.12
		N(4)G(2)K(2)	
185	F	F(78)Y(14)L(4)	0.12
		A(2)	
277	D	D(80).(6)S(4)	0.12
		V(2)Q(2)E(4)	
282	Y	F(65).(6)Y(17)	0.14
		V(4)I(2)L(4)	
196	D	E(17)D(74).(2)	0.15
		N(2)P(4)	
239	S	S(72)A(19).(6)	0.16

*continued in next column*

Table 16. continued			
res	type	substitutions(%)	cvg
		L(2)	
243	I	I(68).(6)F(4)	0.16
		V(14)L(6)	
241	M	F(31)M(38).(6)	0.17
		I(17)Y(6)	
56	T	T(53)A(14)S(17)	0.18
		V(12).(2)	
192	I	L(10)V(8)I(70)	0.18
		P(4)T(6)	
242	L	L(70)V(14).(6)	0.18
		M(2)I(6)	
190	S	S(74)T(14)R(2)	0.19
		Q(8)	
227	Y	F(34)W(12)Y(46)	0.19
		.(6)	
247	F	Y(31)H(12)F(48)	0.19
		.(6)	
225	Y	Y(87).(6)F(4)	0.20
		V(2)	
280	K	E(65).(6)P(2)	0.20
		D(17)K(6)R(2)	
184	W	F(19)L(27)W(48)	0.21
		V(4)	
245	T	P(76).(6)R(2)	0.21
		S(2)K(2)T(10)	
189	A	A(48)G(31)S(4)	0.22
		V(4)C(4)F(6)	
206	E	E(76).(4)H(4)	0.22
		Q(4)N(4)R(2)	
		T(2)M(2)	
59	L	I(61)F(4).(2)	0.24
		L(14)V(10)H(6)	
327	H	Q(61).(6)R(2)	0.25
		S(2)K(2)H(21)	
		T(4)	

**Table 16.** Residues forming surface "patch" in 2p0wA.

Table 17.		
res	type	disruptive mutations
199	W	(KE)(TQD)(SNCG)(R)
240	Q	(Y)(FTWH)(SVCAG)(D)
274	T	(KR)(FQMWH)(NLPI)(E)
276	E	(FWH)(VCAG)(YR)(T)
286	R	(TD)(SVCLAPIG)(YE)(FMW)
235	R	(TD)(SVCLAPIG)(YE)(FMW)
278	P	(Y)(R)(H)(T)
53	P	(Y)(R)(H)(T)
251	G	(E)(D)(KM)(FW)
248	Q	(TY)(SFVCAWG)(HD)(ELPI)
177	R	(D)(TE)(Y)(S)

*continued in next column*

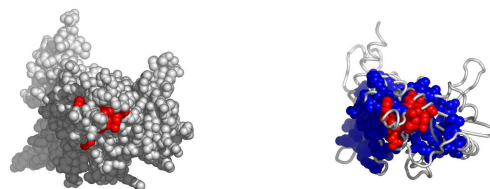
**Table 17. continued**

res	type	disruptive mutations
186	I	(YR)(H)(TKE)(SQCDG)
51	F	(K)(E)(Q)(D)
237	R	(T)(YD)(SVCAG)(FLWPI)
322	K	(Y)(FTW)(CG)(SVA)
246	P	(Y)(T)(R)(H)
272	D	(FWHR)(YVCAG)(T)(K)
60	F	(K)(E)(Q)(D)
61	G	(E)(FWD)(KMRH)(Y)
179	Q	(Y)(FW)(H)(T)
253	G	(KER)(HD)(Q)(FMW)
187	E	(FWH)(R)(YVCAG)(T)
285	L	(R)(Y)(H)(T)
57	H	(EQM)(TVA)(NKCLPDIG)(S)
287	D	(R)(FWH)(Y)(KVCAG)
58	Q	(Y)(H)(FW)(T)
64	E	(FW)(H)(Y)(VA)
185	F	(K)(E)(Q)(DR)
277	D	(R)(H)(FW)(Y)
282	Y	(K)(Q)(R)(E)
196	D	(R)(H)(FW)(Y)
239	S	(R)(K)(H)(Q)
243	I	(R)(Y)(T)(H)
241	M	(T)(Y)(R)(H)
56	T	(KR)(Q)(H)(M)
192	I	(R)(Y)(H)(K)
242	L	(Y)(R)(H)(T)
190	S	(FW)(KHR)(M)(Y)
227	Y	(K)(Q)(EM)(N)
247	F	(KE)(Q)(D)(T)
225	Y	(K)(Q)(EM)(NR)
280	K	(Y)(FW)(T)(CG)
184	W	(KE)(TQD)(R)(SNCG)
245	T	(FWR)(KH)(M)(Q)
189	A	(K)(ER)(Y)(Q)
206	E	(FW)(H)(Y)(VCAG)
59	L	(R)(Y)(T)(E)
327	H	(E)(D)(M)(T)

**Table 17.** Disruptive mutations for the surface patch in 2p0wA.

Another group of surface residues is shown in Fig.13. The right panel shows (in blue) the rest of the larger cluster this surface belongs to. The residues belonging to this surface "patch" are listed in Table 18, while Table 19 suggests possible disruptive replacements for these residues (see Section 3.6).

Table 18.			
res	type	substitutions(%)	cvg
69	Y	Y(97).(2)	0.01
72	L	L(91)F(2)C(4). (2)	0.05
91	Y	Y(93)F(4).(2)	0.06
105	D	D(78)T(12)V(8)	0.13
<i>continued in next column</i>			

**Fig. 13.** Another possible active surface on the chain 2p0wA. The larger cluster it belongs to is shown in blue.**Table 18. continued**

res	type	substitutions(%)	cvg
94	K	K(70)R(14)N(2) Q(8)D(2)I(2)	0.17
67	F	Y(21)F(68)E(2) L(2)Q(4).(2)	0.23
106	D	D(74)L(4)E(2) G(2)F(2)N(12) P(2)	0.23
32	A	A(65)V(17)T(4) (2)C(8)S(2)	0.24

**Table 18.** Residues forming surface "patch" in 2p0wA.**Table 19.**

res	type	disruptive mutations
69	Y	(K)(QM)(NVLAPI)(ER)
72	L	(R)(Y)(TKEH)(S)
91	Y	(K)(Q)(M)(E)
105	D	(R)(H)(K)(FW)
94	K	(Y)(T)(FW)(CG)
67	F	(K)(TE)(CDG)(QR)
106	D	(R)(H)(FW)(Y)
32	A	(KR)(E)(Y)(Q)

**Table 19.** Disruptive mutations for the surface patch in 2p0wA.

### 3 NOTES ON USING TRACE RESULTS

#### 3.1 Coverage

Trace results are commonly expressed in terms of coverage: the residue is important if its "coverage" is small - that is if it belongs to some small top percentage of residues [100% is all of the residues in a chain], according to trace. The ET results are presented in the form of a table, usually limited to top 25% percent of residues (or to some nearby percentage), sorted by the strength of the presumed evolutionary pressure. (I.e., the smaller the coverage, the stronger the pressure on the residue.) Starting from the top of that list, mutating a couple of residues should affect the protein somehow, with the exact effects to be determined experimentally.

### 3.2 Known substitutions

One of the table columns is “substitutions” - other amino acid types seen at the same position in the alignment. These amino acid types may be interchangeable at that position in the protein, so if one wants to affect the protein by a point mutation, they should be avoided. For example if the substitutions are “RVK” and the original protein has an R at that position, it is advisable to try anything, but RVK. Conversely, when looking for substitutions which will *not* affect the protein, one may try replacing, R with K, or (perhaps more surprisingly), with V. The percentage of times the substitution appears in the alignment is given in the immediately following bracket. No percentage is given in the cases when it is smaller than 1%. This is meant to be a rough guide - due to rounding errors these percentages often do not add up to 100%.

### 3.3 Surface

To detect candidates for novel functional interfaces, first we look for residues that are solvent accessible (according to DSSP program) by at least  $10\text{\AA}^2$ , which is roughly the area needed for one water molecule to come in the contact with the residue. Furthermore, we require that these residues form a “cluster” of residues which have neighbor within  $5\text{\AA}$  from any of their heavy atoms.

Note, however, that, if our picture of protein evolution is correct, the neighboring residues which *are not* surface accessible might be equally important in maintaining the interaction specificity - they should not be automatically dropped from consideration when choosing the set for mutagenesis. (Especially if they form a cluster with the surface residues.)

### 3.4 Number of contacts

Another column worth noting is denoted “noc/bb”; it tells the number of contacts heavy atoms of the residue in question make across the interface, as well as how many of them are realized through the backbone atoms (if all or most contacts are through the backbone, mutation presumably won’t have strong impact). Two heavy atoms are considered to be “in contact” if their centers are closer than  $5\text{\AA}$ .

### 3.5 Annotation

If the residue annotation is available (either from the pdb file or from other sources), another column, with the header “annotation” appears. Annotations carried over from PDB are the following: site (indicating existence of related site record in PDB), S-S (disulfide bond forming residue), hb (hydrogen bond forming residue), jb (james bond forming residue), and sb (for salt bridge forming residue).

### 3.6 Mutation suggestions

Mutation suggestions are completely heuristic and based on complementarity with the substitutions found in the alignment. Note that they are meant to be **disruptive** to the interaction of the protein with its ligand. The attempt is made to complement the following properties: small [AVGSTC], medium [LPNQDEMIL], large [WPHYHR], hydrophobic [LPVAMWFI], polar [GTCY]; positively [KHR], or negatively [DE] charged, aromatic [WPHYH], long aliphatic chain [EKRRQM], OH-group possession [SDETY], and NH2 group possession [NQRK]. The suggestions are listed according to how different they appear to be from the original amino acid, and they are grouped in round brackets if they appear equally disruptive. From left to right, each bracketed group of amino acid types resembles more strongly the original (i.e. is, presumably, less

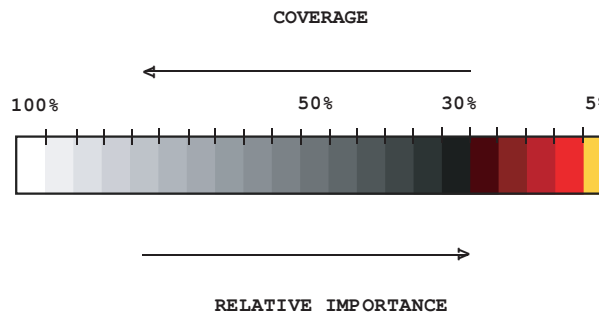


Fig. 14. Coloring scheme used to color residues by their relative importance.

disruptive) These suggestions are tentative - they might prove disruptive to the fold rather than to the interaction. Many researcher will choose, however, the straightforward alanine mutations, especially in the beginning stages of their investigation.

## 4 APPENDIX

### 4.1 File formats

Files with extension “ranks\_sorted” are the actual trace results. The fields in the table in this file:

- alignment# number of the position in the alignment
- residue# residue number in the PDB file
- type amino acid type
- rank rank of the position according to older version of ET
- variability has two subfields:
  1. number of different amino acids appearing in in this column of the alignment
  2. their type
- rho ET score - the smaller this value, the lesser variability of this position across the branches of the tree (and, presumably, the greater the importance for the protein)
- cvg coverage - percentage of the residues on the structure which have this rho or smaller
- gaps percentage of gaps in this column

### 4.2 Color schemes used

The following color scheme is used in figures with residues colored by cluster size: black is a single-residue cluster; clusters composed of more than one residue colored according to this hierarchy (ordered by descending size): red, blue, yellow, green, purple, azure, turquoise, brown, coral, magenta, LightSalmon, SkyBlue, violet, gold, bisque, LightSlateBlue, orchid, RosyBrown, MediumAquamarine, DarkOliveGreen, CornflowerBlue, grey55, burlywood, LimeGreen, tan, DarkOrange, DeepPink, maroon, BlanchedAlmond.

The colors used to distinguish the residues by the estimated evolutionary pressure they experience can be seen in Fig. 14.

### 4.3 Credits

**4.3.1 Alistat** *alistat* reads a multiple sequence alignment from the file and shows a number of simple statistics about it. These statistics include the format, the number of sequences, the total number of residues, the average and range of the sequence lengths, and the alignment length (e.g. including gap characters). Also shown are some percent identities. A percent pairwise alignment identity is defined as  $(\text{idents} / \text{MIN}(\text{len1}, \text{len2}))$  where *idents* is the number of exact identities and *len1*, *len2* are the unaligned lengths of the two sequences. The "average percent identity", "most related pair", and "most unrelated pair" of the alignment are the average, maximum, and minimum of all  $(N)(N-1)/2$  pairs, respectively. The "most distant seq" is calculated by finding the maximum pairwise identity (best relative) for all *N* sequences, then finding the minimum of these *N* numbers (hence, the most outlying sequence). *alistat* is copyrighted by HHMI/Washington University School of Medicine, 1992-2001, and freely distributed under the GNU General Public License.

**4.3.2 CE** To map ligand binding sites from different source structures, *report\_maker* uses the CE program: <http://cl.sdsc.edu/>. Shindyalov IN, Bourne PE (1998) "Protein structure alignment by incremental combinatorial extension (CE) of the optimal path". *Protein Engineering* 11(9) 739-747.

**4.3.3 DSSP** In this work a residue is considered solvent accessible if the DSSP program finds it exposed to water by at least  $10\text{\AA}^2$ , which is roughly the area needed for one water molecule to come in the contact with the residue. DSSP is copyrighted by W. Kabsch, C. Sander and MPI-MF, 1983, 1985, 1988, 1994 1995, CMBI version by Elmar.Krieger@cmbi.kun.nl November 18,2002,

<http://www.cmbi.kun.nl/gv/dssp/descrip.html>.

**4.3.4 HSSP** Whenever available, *report\_maker* uses HSSP alignment as a starting point for the analysis (sequences shorter than 75% of the query are taken out, however); R. Schneider, A. de Daruvar, and C. Sander. "The HSSP database of protein structure-sequence alignments." *Nucleic Acids Res.*, 25:226-230, 1997.

<http://swift.cmbi.kun.nl/swift/hssp/>

**4.3.5 LaTeX** The text for this report was processed using L<sup>A</sup>T<sub>E</sub>X; Leslie Lamport, "LaTeX: A Document Preparation System Addison-Wesley," Reading, Mass. (1986).

**4.3.6 Muscle** When making alignments "from scratch", *report\_maker* uses Muscle alignment program: Edgar, Robert C. (2004), "MUSCLE: multiple sequence alignment with high accuracy and high throughput." *Nucleic Acids Research* 32(5), 1792-97.

<http://www.drive5.com/muscle/>

**4.3.7 Pymol** The figures in this report were produced using Pymol. The scripts can be found in the attachment. Pymol is an open-source application copyrighted by DeLano Scientific LLC (2005). For more information about Pymol see <http://pymol.sourceforge.net/>. (Note for Windows users: the attached package needs to be unzipped for Pymol to read the scripts and launch the viewer.)

### 4.4 Note about ET Viewer

Dan Morgan from the Lichtarge lab has developed a visualization tool specifically for viewing trace results. If you are interested, please visit:

<http://mammoth.bcm.tmc.edu/traceview/>

The viewer is self-unpacking and self-installing. Input files to be used with ETV (extension .etvx) can be found in the attachment to the main report.

### 4.5 Citing this work

The method used to rank residues and make predictions in this report can be found in Mihalek, I., I. Reš, O. Lichtarge. (2004). "A Family of Evolution-Entropy Hybrid Methods for Ranking of Protein Residues by Importance" *J. Mol. Bio.* **336**: 1265-82. For the original version of ET see O. Lichtarge, H.Bourne and F. Cohen (1996). "An Evolutionary Trace Method Defines Binding Surfaces Common to Protein Families" *J. Mol. Bio.* **257**: 342-358.

**report\_maker** itself is described in Mihalek I., I. Res and O. Lichtarge (2006). "Evolutionary Trace Report Maker: a new type of service for comparative analysis of proteins." *Bioinformatics* **22**:1656-7.

### 4.6 About report\_maker

**report\_maker** was written in 2006 by Ivana Mihalek. The 1D ranking visualization program was written by Ivica Reš. **report\_maker** is copyrighted by Lichtarge Lab, Baylor College of Medicine, Houston.

### 4.7 Attachments

The following files should accompany this report:

- 2p0wA.complex.pdb - coordinates of 2p0wA with all of its interacting partners
- 2p0wA.etvx - ET viewer input file for 2p0wA
- 2p0wA.cluster\_report.summary - Cluster report summary for 2p0wA
- 2p0wA.ranks - Ranks file in sequence order for 2p0wA
- 2p0wA.clusters - Cluster descriptions for 2p0wA
- 2p0wA.msf - the multiple sequence alignment used for the chain 2p0wA
- 2p0wA.descr - description of sequences used in 2p0wA msf
- 2p0wA.ranks\_sorted - full listing of residues and their ranking for 2p0wA
- 2p0wA.2p0wACT805.if.pml - Pymol script for Figure 5
- 2p0wA.cbvcg - used by other 2p0wA - related pymol scripts
- 2p0wA.2p0wACM803.if.pml - Pymol script for Figure 6
- 2p0wA.2p0wB.if.pml - Pymol script for Figure 7
- 2p0wA.2p0wCL806.if.pml - Pymol script for Figure 8
- 2p0wA.2p0wAACO401.if.pml - Pymol script for Figure 9
- 2p0wA.2p0wP.if.pml - Pymol script for Figure 10
- 2p0wA.2p0wACM804.if.pml - Pymol script for Figure 11