

# 3d3m

Evolutionary trace report by **report\_maker**

May 13, 2010



## CONTENTS

### 1 Introduction

### 2 Chain 3d3mA

- 2.1 Q5RB54 overview
- 2.2 Multiple sequence alignment for 3d3mA
- 2.3 Residue ranking in 3d3mA
- 2.4 Top ranking residues in 3d3mA and their position on the structure
  - 2.4.1 Clustering of residues at 25% coverage.
  - 2.4.2 Overlap with known functional surfaces at 25% coverage.
  - 2.4.3 Possible novel functional surfaces at 25% coverage.

### 3 Notes on using trace results

- 3.1 Coverage
- 3.2 Known substitutions
- 3.3 Surface
- 3.4 Number of contacts
- 3.5 Annotation
- 3.6 Mutation suggestions

### 4 Appendix

- 4.1 File formats
- 4.2 Color schemes used
- 4.3 Credits

4.3.1	<b>Alistat</b>	5
4.3.2	<b>CE</b>	6
4.3.3	<b>DSSP</b>	6
4.3.4	<b>HSSP</b>	6
4.3.5	<b>LaTex</b>	6
4.3.6	<b>Muscle</b>	6
4.3.7	<b>Pymol</b>	6
4.4	Note about ET Viewer	6
4.5	Citing this work	6
4.6	About report_maker	6
4.7	Attachments	6

## 1 INTRODUCTION

From the original Protein Data Bank entry (PDB id 3d3m):

**Title:** The crystal structure of the c-terminal region of death associated protein 5(dap5)

**Compound:** Mol id: 1; molecule: eukaryotic translation initiation factor 4 gamma 2; chain: a, b; fragment: c terminal domain; synonym: death-associated protein 5, dap-5, eif-4-gamma 2, eif-4g 2, eif4g 2, p97; engineered: yes

**Organism, scientific name:** Homo Sapiens;

3d3m contains a single unique chain 3d3mA (161 residues long) and its homologue 3d3mB.

## 2 CHAIN 3D3MA

### 2.1 Q5RB54 overview

From SwissProt, id Q5RB54, 87% identical to 3d3mA:

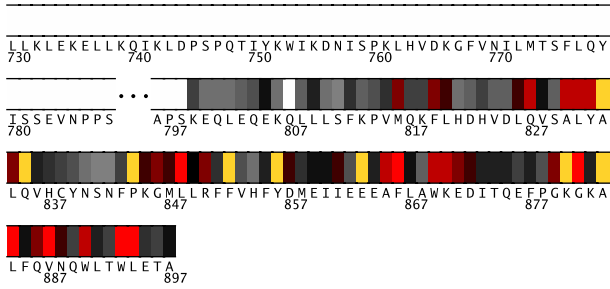
**Description:** Hypothetical protein DKFZp459G247 (Fragment).

**Organism, scientific name:** Pongo pygmaeus (Orangutan).

**Taxonomy:** Eukaryota; Metazoa; Chordata; Craniata; Vertebrata; Euteleostomi; Mammalia; Eutheria; Euarchontoglires; Primates; Catarrhini; Hominidae; Pongo.

### 2.2 Multiple sequence alignment for 3d3mA

For the chain 3d3mA, the alignment 3d3mA.msf (attached) with 40 sequences was used. The alignment was downloaded from the HSSP database, and fragments shorter than 75% of the query as well as duplicate sequences were removed. It can be found in the attachment to this report, under the name of 3d3mA.msf. Its statistics, from the *alistat* program are the following:



**Fig. 1.** Residues 730-897 in 3d3mA colored by their relative importance. (See Appendix, Fig.6, for the coloring scheme.)

```

Format:                MSF
Number of sequences:  40
Total number of residues:  5064
Smallest:             66
Largest:             161
Average length:      126.6
Alignment length:    161
Average identity:     44%
Most related pair:   99%
Most unrelated pair: 11%
Most distant seq:    30%

```

Furthermore, <1% of residues show as conserved in this alignment.

The alignment consists of 50% eukaryotic ( 40% vertebrata, 2% arthropoda) sequences. (Descriptions of some sequences were not readily available.) The file containing the sequence descriptions can be found in the attachment, under the name 3d3mA.descr.

### 2.3 Residue ranking in 3d3mA

The 3d3mA sequence is shown in Fig. 1, with each residue colored according to its estimated importance. The full listing of residues in 3d3mA can be found in the file called 3d3mA.ranks.sorted in the attachment.

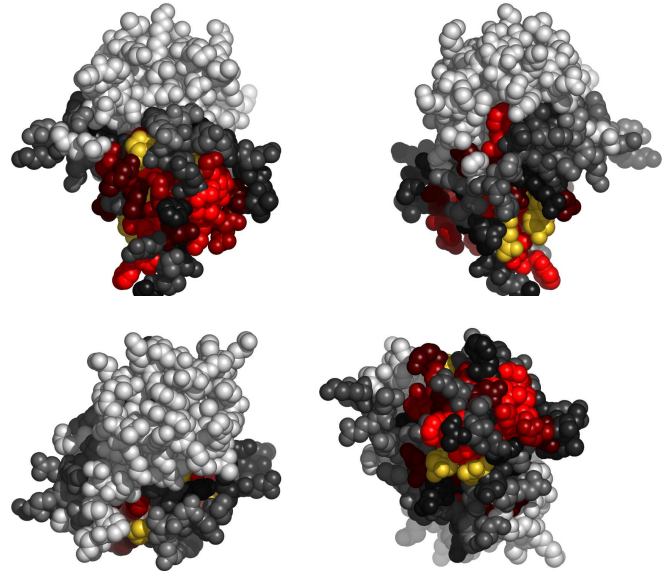
### 2.4 Top ranking residues in 3d3mA and their position on the structure

In the following we consider residues ranking among top 25% of residues in the protein . Figure 2 shows residues in 3d3mA colored by their importance: bright red and yellow indicate more conserved/important residues (see Appendix for the coloring scheme). A Pymol script for producing this figure can be found in the attachment.

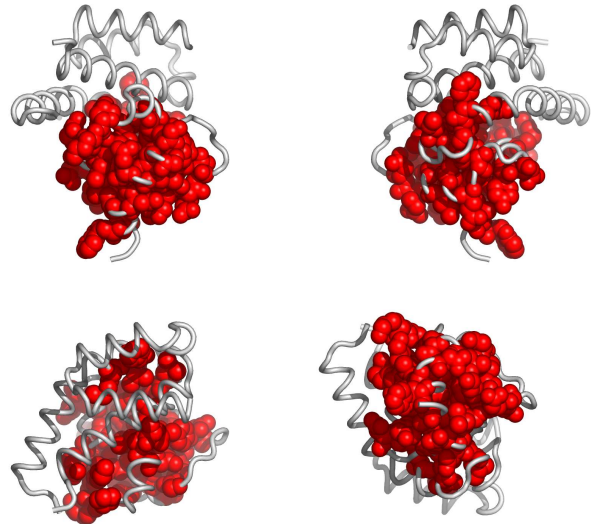
**2.4.1 Clustering of residues at 25% coverage.** Fig. 3 shows the top 25% of all residues, this time colored according to clusters they belong to. The clusters in Fig.3 are composed of the residues listed in Table 1.

Table 1.		
cluster color	size	member residues
red	41	816, 819, 820, 826, 827, 830, 831

*continued in next column*



**Fig. 2.** Residues in 3d3mA, colored by their relative importance. Clockwise: front, back, top and bottom views.



**Fig. 3.** Residues in 3d3mA, colored according to the cluster they belong to: red, followed by blue and yellow are the largest clusters (see Appendix for the coloring scheme). Clockwise: front, back, top and bottom views. The corresponding Pymol script is attached.

Table 1. continued		
cluster color	size	member residues
		832, 833, 834, 835, 844, 845, 846
		847, 848, 849, 850, 852, 856, 857
		861, 863, 865, 866, 867, 869, 870

*continued in next column*

Table 1. continued		
cluster color	size	member residues
		871, 872, 879, 880, 881, 883, 884 886, 887, 888, 890, 893, 894

**Table 1.** Clusters of top ranking residues in 3d3mA.

2.4.2 *Overlap with known functional surfaces at 25% coverage.* The name of the ligand is composed of the source PDB identifier and the heteroatom name used in that file.

**Interface with 3d3mB.** Table 2 lists the top 25% of residues at the interface with 3d3mB. The following table (Table 3) suggests possible disruptive replacements for these residues (see Section 3.6).

Table 2.					
res	type	subst's (%)	cvg	noc/ bb	dist (Å)
856	Y	L(2) Y(94) M(2)	0.04	28/6	3.55
893	W	W(94) . (5)	0.06	66/3	3.04
894	L	L(94) . (5)	0.06	11/5	3.93
890	W	F(45) W(52) . (2)	0.11	38/7	3.20
850	R	L(2) K(5) R(50) M(32) A(5) P(2) I(2)	0.18	20/9	3.69
846	G	G(62) N(29) D(7)	0.19	8/8	3.23
857	D	L(2) D(72) E(17) V(2) T(2) N(2)	0.21	40/19	3.44
845	K	S(2) K(57) A(27) V(2) I(2) P(7)	0.22	19/0	3.56
849	L	F(5) G(5) L(42)	0.25	14/7	3.66

continued in next column

Table 2. continued					
res	type	subst's (%)	cvg	noc/ bb	dist (Å)
		R(34) T(2) K(2) C(5) Q(2)			

**Table 2.** The top 25% of residues in 3d3mA at the interface with 3d3mB. (Field names: res: residue number in the PDB entry; type: amino acid type; substs: substitutions seen in the alignment; with the percentage of each type in the bracket; noc/bb: number of contacts with the ligand, with the number of contacts realized through backbone atoms given in the bracket; dist: distance of closest approach to the ligand.)

Table 3.		
res	type	disruptive mutations
856	Y	(K)(R)(Q)(E)
893	W	(KE)(TQD)(SNCG)(R)
894	L	(YR)(TH)(SCG)(KE)
890	W	(E)(K)(TD)(Q)
850	R	(TY)(D)(CG)(SE)
846	G	(R)(FWH)(K)(E)
857	D	(R)(H)(FW)(Y)
845	K	(Y)(T)(FW)(H)
849	L	(Y)(R)(H)(TE)

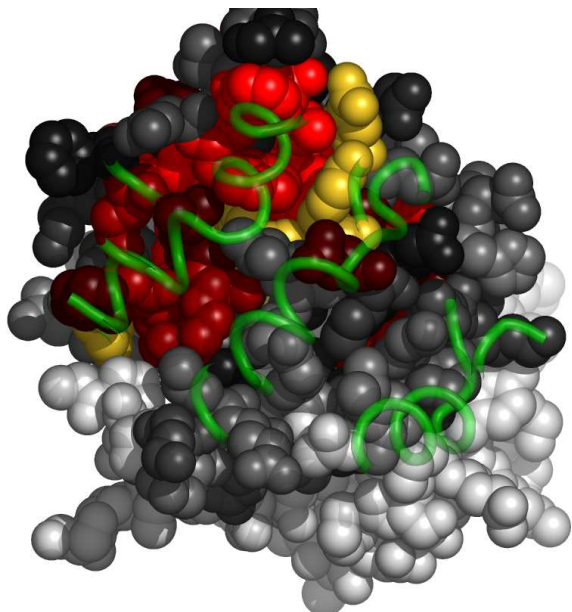
**Table 3.** List of disruptive mutations for the top 25% of residues in 3d3mA, that are at the interface with 3d3mB.

Figure 4 shows residues in 3d3mA colored by their importance, at the interface with 3d3mB.

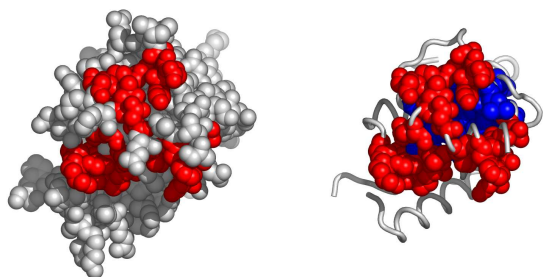
2.4.3 *Possible novel functional surfaces at 25% coverage.* One group of residues is conserved on the 3d3mA surface, away from (or substantially larger than) other functional sites and interfaces recognizable in PDB entry 3d3m. It is shown in Fig. 5. The right panel shows (in blue) the rest of the larger cluster this surface belongs to. The residues belonging to this surface "patch" are listed in Table 4, while Table 5 suggests possible disruptive replacements for these residues (see Section 3.6).

Table 4.			
res	type	substitutions(%)	cvg
844	P	P(92)F(5)I(2)	0.01
863	E	E(94)K(2)A(2)	0.03
856	Y	L(2)Y(94)M(2)	0.04
880	K	K(90)D(5).(2) P(2)	0.05
893	W	W(94).(5)	0.06
894	L	L(94).(5)	0.06
881	G	G(90)K(5)D(2) . (2)	0.07
884	L	Q(2)L(92)I(2)	0.07

continued in next column



**Fig. 4.** Residues in 3d3mA, at the interface with 3d3mB, colored by their relative importance. 3d3mB is shown in backbone representation (See Appendix for the coloring scheme for the protein chain 3d3mA.)



**Fig. 5.** A possible active surface on the chain 3d3mA. The larger cluster it belongs to is shown in blue.

Table 4. continued			
res	type	substitutions(%)	cvg
		. (2)	
832	Y	Y(82)L(5)T(2) H(2)S(2)F(5)	0.11
890	W	F(45)W(52). (2)	0.11
870	K	E(34)A(7)K(52) Q(2). (2)	0.14
871	E	K(5)E(55)S(32) D(2). (2)N(2)	0.15
879	G	G(90)M(2)A(5) . (2)	0.17
850	R	L(2)K(5)R(50) M(32)A(5)P(2) I(2)	0.18
846	G	G(62)N(29)D(7)	0.19

*continued in next column*

Table 4. continued			
res	type	substitutions(%)	cvg
886	Q	S(37)L(5)Q(47) E(5). (2)K(2)	0.19
847	M	M(42)L(45)F(2) S(2)V(7)	0.20
872	D	S(37)E(12)N(2) D(42). (2)G(2)	0.20
857	D	L(2)D(72)E(17) V(2)T(2)N(2)	0.21
845	K	S(2)K(57)A(27) V(2)I(2)P(7)	0.22
888	N	Q(7)N(47)T(34) G(2). (2)A(2) L(2)	0.22
849	L	F(5)G(5)L(42) R(34)T(2)K(2) C(5)Q(2)	0.25

**Table 4.** Residues forming surface "patch" in 3d3mA.

Table 5.		
res	type	disruptive mutations
844	P	(R)(Y)(T)(KE)
863	E	(FYWH)(CRG)(VA)(T)
856	Y	(K)(R)(Q)(E)
880	K	(Y)(FTW)(CG)(SVA)
893	W	(KE)(TQD)(SNCG)(R)
894	L	(YR)(TH)(SCG)(KE)
881	G	(FWR)(H)(KE)(YM)
884	L	(Y)(R)(TH)(SCG)
832	Y	(K)(Q)(M)(ER)
890	W	(E)(K)(TD)(Q)
870	K	(Y)(FW)(T)(CG)
871	E	(FW)(H)(Y)(VCARG)
879	G	(R)(KE)(H)(D)
850	R	(TY)(D)(CG)(SE)
846	G	(R)(FWH)(K)(E)
886	Q	(Y)(FWH)(T)(CG)
847	M	(Y)(R)(H)(T)
872	D	(R)(FWH)(Y)(K)
857	D	(R)(H)(FW)(Y)
845	K	(Y)(T)(FW)(H)
888	N	(Y)(H)(FW)(R)
849	L	(Y)(R)(H)(TE)

**Table 5.** Disruptive mutations for the surface patch in 3d3mA.

### 3 NOTES ON USING TRACE RESULTS

#### 3.1 Coverage

Trace results are commonly expressed in terms of coverage: the residue is important if its "coverage" is small - that is if it belongs to some small top percentage of residues [100% is all of the residues in a chain], according to trace. The ET results are presented in the

form of a table, usually limited to top 25% percent of residues (or to some nearby percentage), sorted by the strength of the presumed evolutionary pressure. (I.e., the smaller the coverage, the stronger the pressure on the residue.) Starting from the top of that list, mutating a couple of residues should affect the protein somehow, with the exact effects to be determined experimentally.

### 3.2 Known substitutions

One of the table columns is “substitutions” - other amino acid types seen at the same position in the alignment. These amino acid types may be interchangeable at that position in the protein, so if one wants to affect the protein by a point mutation, they should be avoided. For example if the substitutions are “RVK” and the original protein has an R at that position, it is advisable to try anything, but RVK. Conversely, when looking for substitutions which will *not* affect the protein, one may try replacing, R with K, or (perhaps more surprisingly), with V. The percentage of times the substitution appears in the alignment is given in the immediately following bracket. No percentage is given in the cases when it is smaller than 1%. This is meant to be a rough guide - due to rounding errors these percentages often do not add up to 100%.

### 3.3 Surface

To detect candidates for novel functional interfaces, first we look for residues that are solvent accessible (according to DSSP program) by at least  $10\text{\AA}^2$ , which is roughly the area needed for one water molecule to come in the contact with the residue. Furthermore, we require that these residues form a “cluster” of residues which have neighbor within  $5\text{\AA}$  from any of their heavy atoms.

Note, however, that, if our picture of protein evolution is correct, the neighboring residues which *are not* surface accessible might be equally important in maintaining the interaction specificity - they should not be automatically dropped from consideration when choosing the set for mutagenesis. (Especially if they form a cluster with the surface residues.)

### 3.4 Number of contacts

Another column worth noting is denoted “noc/bb”; it tells the number of contacts heavy atoms of the residue in question make across the interface, as well as how many of them are realized through the backbone atoms (if all or most contacts are through the backbone, mutation presumably won't have strong impact). Two heavy atoms are considered to be “in contact” if their centers are closer than  $5\text{\AA}$ .

### 3.5 Annotation

If the residue annotation is available (either from the pdb file or from other sources), another column, with the header “annotation” appears. Annotations carried over from PDB are the following: site (indicating existence of related site record in PDB), S-S (disulfide bond forming residue), hb (hydrogen bond forming residue), jb (james bond forming residue), and sb (for salt bridge forming residue).

### 3.6 Mutation suggestions

Mutation suggestions are completely heuristic and based on complementarity with the substitutions found in the alignment. Note that they are meant to be **disruptive** to the interaction of the protein with its ligand. The attempt is made to complement the following properties: small [AVGSTC], medium [LPNQDEMIK], large

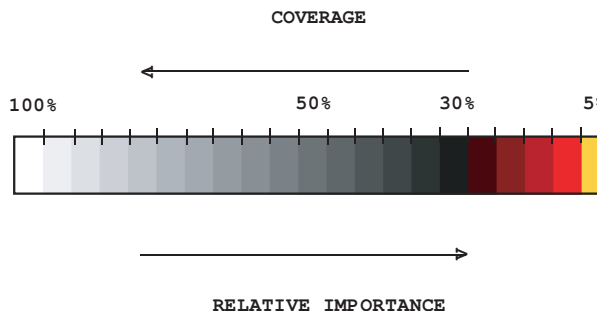


Fig. 6. Coloring scheme used to color residues by their relative importance.

[WFYHR], hydrophobic [LPVAMWFI], polar [GTCY]; positively [KHR], or negatively [DE] charged, aromatic [WFYH], long aliphatic chain [EK RQM], OH-group possession [SDETY], and NH<sub>2</sub> group possession [NQRK]. The suggestions are listed according to how different they appear to be from the original amino acid, and they are grouped in round brackets if they appear equally disruptive. From left to right, each bracketed group of amino acid types resembles more strongly the original (i.e. is, presumably, less disruptive) These suggestions are tentative - they might prove disruptive to the fold rather than to the interaction. Many researcher will choose, however, the straightforward alanine mutations, especially in the beginning stages of their investigation.

## 4 APPENDIX

### 4.1 File formats

Files with extension “ranks\_sorted” are the actual trace results. The fields in the table in this file:

- alignment# number of the position in the alignment
- residue# residue number in the PDB file
- type amino acid type
- rank rank of the position according to older version of ET
- variability has two subfields:
  1. number of different amino acids appearing in in this column of the alignment
  2. their type
- rho ET score - the smaller this value, the lesser variability of this position across the branches of the tree (and, presumably, the greater the importance for the protein)
- cvg coverage - percentage of the residues on the structure which have this rho or smaller
- gaps percentage of gaps in this column

### 4.2 Color schemes used

The following color scheme is used in figures with residues colored by cluster size: black is a single-residue cluster; clusters composed of



more than one residue colored according to this hierarchy (ordered by descending size): red, blue, yellow, green, purple, azure, turquoise, brown, coral, magenta, LightSalmon, SkyBlue, violet, gold, bisque, LightSlateBlue, orchid, RosyBrown, MediumAquamarine, DarkOliveGreen, CornflowerBlue, grey55, burlywood, LimeGreen, tan, DarkOrange, DeepPink, maroon, BlanchedAlmond.

The colors used to distinguish the residues by the estimated evolutionary pressure they experience can be seen in Fig. 6.

### 4.3 Credits

**4.3.1 Alistat** *alistat* reads a multiple sequence alignment from the file and shows a number of simple statistics about it. These statistics include the format, the number of sequences, the total number of residues, the average and range of the sequence lengths, and the alignment length (e.g. including gap characters). Also shown are some percent identities. A percent pairwise alignment identity is defined as  $(\text{idents} / \text{MIN}(\text{len1}, \text{len2}))$  where *idents* is the number of exact identities and *len1*, *len2* are the unaligned lengths of the two sequences. The "average percent identity", "most related pair", and "most unrelated pair" of the alignment are the average, maximum, and minimum of all  $(N)(N-1)/2$  pairs, respectively. The "most distant seq" is calculated by finding the maximum pairwise identity (best relative) for all *N* sequences, then finding the minimum of these *N* numbers (hence, the most outlying sequence). *alistat* is copyrighted by HHMI/Washington University School of Medicine, 1992-2001, and freely distributed under the GNU General Public License.

**4.3.2 CE** To map ligand binding sites from different source structures, *report\_maker* uses the CE program: <http://c1.sdsc.edu/>. Shindyalov IN, Bourne PE (1998) "Protein structure alignment by incremental combinatorial extension (CE) of the optimal path". *Protein Engineering* 11(9) 739-747.

**4.3.3 DSSP** In this work a residue is considered solvent accessible if the DSSP program finds it exposed to water by at least  $10\text{\AA}^2$ , which is roughly the area needed for one water molecule to come in the contact with the residue. DSSP is copyrighted by W. Kabsch, C. Sander and MPI-MF, 1983, 1985, 1988, 1994 1995, CMBI version by Elmar.Krieger@cmbi.kun.nl November 18,2002,

<http://www.cmbi.kun.nl/gv/dssp/descrip.html>.

**4.3.4 HSSP** Whenever available, *report\_maker* uses HSSP alignment as a starting point for the analysis (sequences shorter than 75% of the query are taken out, however); R. Schneider, A. de Daruvar, and C. Sander. "The HSSP database of protein structure-sequence alignments." *Nucleic Acids Res.*, 25:226-230, 1997.

<http://swift.cmbi.kun.nl/swift/hssp/>

**4.3.5 LaTeX** The text for this report was processed using L<sup>A</sup>T<sub>E</sub>X; Leslie Lamport, "LaTeX: A Document Preparation System Addison-Wesley," Reading, Mass. (1986).

**4.3.6 Muscle** When making alignments "from scratch", *report\_maker* uses Muscle alignment program: Edgar, Robert C. (2004), "MUSCLE: multiple sequence alignment with high accuracy and high throughput." *Nucleic Acids Research* 32(5), 1792-97.

<http://www.drive5.com/muscle/>

**4.3.7 Pymol** The figures in this report were produced using Pymol. The scripts can be found in the attachment. Pymol is an open-source application copyrighted by DeLano Scientific LLC (2005). For more information about Pymol see <http://pymol.sourceforge.net/>. (Note for Windows users: the attached package needs to be unzipped for Pymol to read the scripts and launch the viewer.)

### 4.4 Note about ET Viewer

Dan Morgan from the Lichtarge lab has developed a visualization tool specifically for viewing trace results. If you are interested, please visit:

<http://mammoth.bcm.tmc.edu/traceview/>

The viewer is self-unpacking and self-installing. Input files to be used with ETV (extension .etvx) can be found in the attachment to the main report.

### 4.5 Citing this work

The method used to rank residues and make predictions in this report can be found in Mihalek, I., I. Reš, O. Lichtarge. (2004). "A Family of Evolution-Entropy Hybrid Methods for Ranking of Protein Residues by Importance" *J. Mol. Bio.* **336**: 1265-82. For the original version of ET see O. Lichtarge, H. Bourne and F. Cohen (1996). "An Evolutionary Trace Method Defines Binding Surfaces Common to Protein Families" *J. Mol. Bio.* **257**: 342-358.

*report\_maker* itself is described in Mihalek I., I. Res and O. Lichtarge (2006). "Evolutionary Trace Report Maker: a new type of service for comparative analysis of proteins." *Bioinformatics* **22**:1656-7.

### 4.6 About report\_maker

*report\_maker* was written in 2006 by Ivana Mihalek. The 1D ranking visualization program was written by Ivica Reš. *report\_maker* is copyrighted by Lichtarge Lab, Baylor College of Medicine, Houston.

### 4.7 Attachments

The following files should accompany this report:

- 3d3mA.complex.pdb - coordinates of 3d3mA with all of its interacting partners
- 3d3mA.etvx - ET viewer input file for 3d3mA
- 3d3mA.cluster\_report.summary - Cluster report summary for 3d3mA
- 3d3mA.ranks - Ranks file in sequence order for 3d3mA
- 3d3mA.clusters - Cluster descriptions for 3d3mA
- 3d3mA.msf - the multiple sequence alignment used for the chain 3d3mA
- 3d3mA.descr - description of sequences used in 3d3mA msf
- 3d3mA.ranks\_sorted - full listing of residues and their ranking for 3d3mA
- 3d3mA.3d3mB.if.pml - Pymol script for Figure 4
- 3d3mA.cbvcg - used by other 3d3mA – related pymol scripts